

LANGPS24540

Installation Instructions

Lankota GPS Adapter for JD 1770 & 1775 CCS Planters

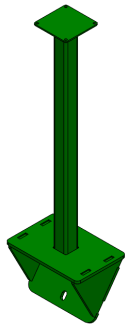
DOES NOT WORK WITH INDIVIDUAL ROW SEED BOX PLANTERS

LANKOTA®

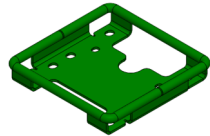
270 West Park Avenue
Huron, SD 57350
866-526-5682

Parts List

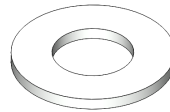
Part Numbers	Description	Qty
LANCP031	Planter GPS Mount	1
LANGPS8119	Starfire Deluxe Shroud Mount	1
LANFWS52	5/16" SAE Flat Washer	8
LANB203	5/16"-18 X 3/4" Grade 5 Hex Head Bolt	4
REDKRJ8	5/16"-18 Top Lock Nut	4



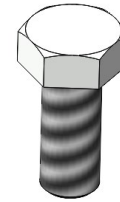
LANCP031 (1)



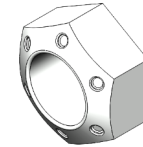
LANGPS8119 (1)



LANFWS52 (8)



LANB203 (4)



REDKRJ8 (4)

Kit Installation

Refer to Figure 1

1. Remove the (3) factory bolts at the center of the planter at the end of the walking platform.
2. Install the LANCP031 on top of the frame tube using the factory hardware. Tighten the hardware.

Figure 1

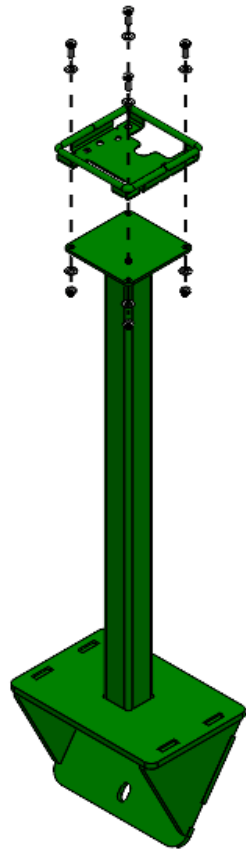


Kit Installation

Refer to Figure 2

3. Mount the Starfire Deluxe Shroud Mount (LANGPS8119) on top of Planter GPS Mount (LANGPS031). Use 5/16" x 0.75" Gr. 5 bolt (LANB203), 5/16" SAE Flat Washer (LANFWS52), and 5/16" - 18 Gr. 5 Top Lock nut (REDKRJ8). When all hardware are in place, tighten to secure mount.

Figure 2



For further technical assistance,

Call Lankota Inc. at:

1-866-526-5682