

LANFSR21395

Installation Instructions

Storage Kit for LANFSR10 Kit

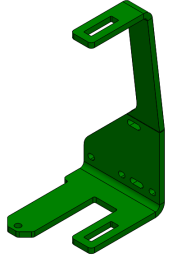
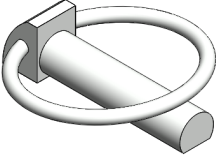

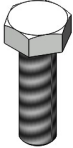

LANKOTA®

**270 West Park Avenue
Huron, SD 57350
866-526-5682**

Numerical Parts List

Part Numbers	Description	Qty
LANFSR275	FSR Storage Bracket	1
LANFSR276	FSR Storage Mount	1
LANFSR277	FSR Storage Spacer	2
RED21940	Linch Pin—7/16" x 1-1/2"	1
LANFR15Q	Hex Head Cap Screw—5/16"-18 x 2"	4
REDB204	Hex Head Cap Screw—5/16"-18 x 1"	4
LANB2023	Hex Head Cap Screw—5/16"-18 x 3/4"	2
REDWL52	Lock Washer—5/16	2
LANFWS52	SAE Flat Washer—5/16	4
LANNAS2	Serrated Flange Nut—5/16"-18	4

Pictorial Parts List

 <p>LANFSR275 (1)</p>	 <p>LANFSR276 (1)</p>	 <p>LANFSR277 (2)</p>	 <p>RED21940 (1)</p>
 <p>LANFR15Q (4)</p>	 <p>REDB204 (4)</p>	 <p>LANB203 (2)</p>	 <p>REDWL52 (2)</p>
 <p>LANFWS52 (4)</p>	 <p>LANNAS2 (4)</p>		

Kit Installation—STS Combines

Refer to Figures 1—3

1. Place the FSR Storage Mount (LANFSR276) between the two plates at the second step from the top on the front side of the ladder with the weld nuts pointed outward.
2. Fasten to the ladder using the provided 5/16"-18 x 3/4" hex head bolts (LANB203) and 5/16" lock washers (REDWL52)

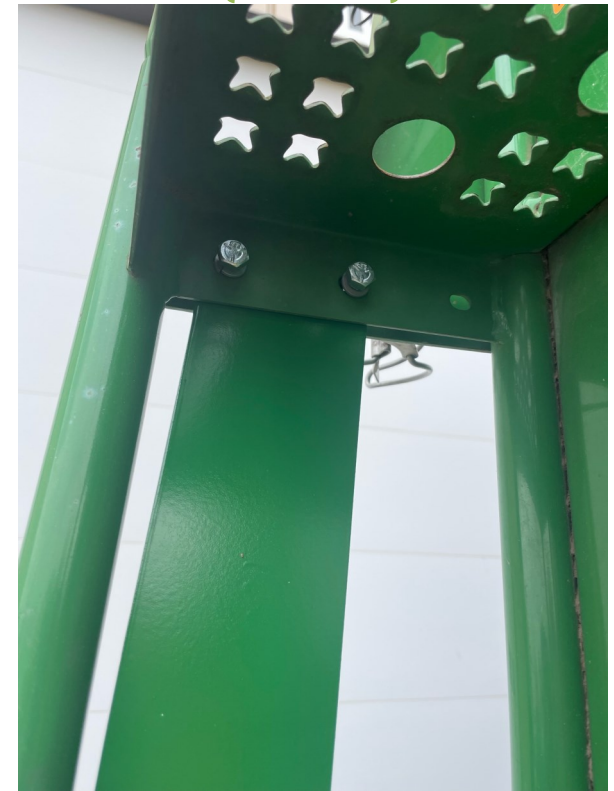
Figure 1



Figure 2



Figure 3



Kit Installation—STS Combines

Refer to Figures 4 & 5

3. Fasten the FSR storage bracket to the outside of the ladder and storage mount using the provided 5/16"-18 x 1" hex head bolts (REDB204), 5/16" SAE flat washers (LANFWS52), and 5/16"-18 serrated flange nuts (LANNAS2). If you need to move the storage bracket outward for handrail clearance, use the provided FSR storage spacers (LANFSR277) and the 5/16"-18 x 2" hex head bolts.
4. Place the FSR handle and FSR10 onto the storage bracket and retain with the provided linch pin (RED21940).



Figure 4



Figure 5

Kit Installation—S Series Combines

Refer to Figures 6 & 7

5. Hold the FSR storage bracket (LANFSR275) with FSR10 attached up to the front of the ladder at a location that doesn't allow the FSR10 to stick below the rigid part of the ladder (Figure 7 for reference).
6. Mark a line to reference where the storage bracket needs to be and set the FSR10 aside.

Figure 6



Figure 7



Kit Installation—S Series Combines

Refer to Figures 8 & 9

7. Mark out and drill a 3/8" hole for the top bolt hole in the storage bracket, **NO CLOSER THAN 1.375"** from the front lip of the ladder.
8. Temporarily fasten the storage bracket to the outside of the ladder, level it up, and mark out two more holes to drill, **NO CLOSER THAN 1.375"** from the front lip of the ladder again.

Figure 8



Figure 9



Kit Installation—S Series Combines

Refer to Figures 9 & 10

9. Drill the other two holes using a 3/8" drill bit.
10. Attach the FSR storage bracket (LANFSR275) to the ladder using the provided 5/16" x 1" hex head bolt (REDB204), 5/16" SAE flat washer (LANFWS52), and 5/16"-18 serrated flange nut (LANNAS2). If you need to move the storage bracket outward for handrail clearance, use the provided FSR storage spacers (LANFSR277) and the 5/16"-18 x 2" hex head bolts.

Figure 10



Figure 11



Kit Installation

Refer to Figure 12

11. Place the FSR handle and FSR10 onto the storage bracket and retain with the provided linch pin (RED21940).

Figure 12



For further technical assistance,

Call Lankota Inc. at:

1-866-526-5682