

LANSP403

Installation Instructions

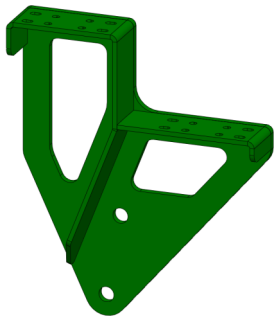
Lankota Single Point Mount for John Deere 9520R, 9570R, 9620R and all 9xx0RX Tractors

LANKOTA®

Parts List

Part Numbers	Description	Qty
LANSP403W	9RX 4WD Single Point Mount	1
LANF1T2M	M20 x 60 Class 10.9 Hex Bolt	2
REDWU58	3/4" Flat Washer	2
LANFMLW0	M20 Lock Washer	2
LANSP002	Single Point 6-Port Block Spacer	4
LANSPUQHBH	Single Point Block Mounting Hardware	2
LANFJ9F2	M8 x 45mm Flanged Hex Bolt	4
LANFE01V	M8 x 30mm Socket Head Screw	4
LANFQ65N	M8 Flanged Nyloc	4

The 3/8" hardware will not be used in this kit.



LANSP403W (1)



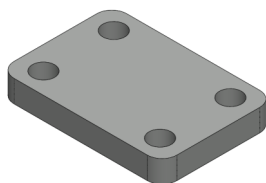
LANF1T2M (2)



REDWU58 (2)



LANFMLW0 (2)



LANSP002 (4)



LANFE01V (8)



LANFQ65N (8)



LANFJ9F2 (8)

Kit Installation



Refer to Figures

1. Clear any dirt and debris from the indicated holes on the rear of the tractor.
2. Attach the mount to the tractor as shown using the M20 bolts, M20 lock washers and 3/4" flat washers.

Follow the additional instructions provided to install blocks and route hoses/fittings correctly.



For further technical assistance,

Call Lankota Inc. at:

1-866-526-5682