

LANSS4412R12FH

Installation Instructions

Lankota GENERATION II Stalk Stomper® Kit for Case IH® 4412F and New Holland 980CF Folding Corn Heads

12 - Row Coverage

LANKOTA®

**270 West Park Avenue
Huron, SD 57350
866-526-5682**

Numerical Parts List

Part Numbers	Description	Qty
LANSSCIH4400B	CNH Frame/Toolbar Mount	8
LANSSCNH401	CNH Top Cylinder Mount	2
LANSSCNH402	CNH Top Cylinder Mount Bolt Plate	2
LANSSCNH403	CNH Cylinder Toolbar Bracket	2
LANSSCNH404	CNH Hydraulic Pivot Mount	4
LANSS7B05BLK	Toolbar Hanger Bracket - Hydraulic Kit	4
LANSSB77BLK	77" Stalk Stomper® Tool Bar	2
LANSSB42BLK	42" Stalk Stomper® Tool Bar	2
LANSS750CYL	Folding Head Hyd SS Cylinder	2
LANSS755BLK	Stalk Stomper Shoe w/ Poly - Grade 50 (Black)	12
LANSS659	Flip-up Stomper Mount	4
LANSS650QD	Quick Disconnect Stomper Mount	6
LANSS2600XO	SS Mounts & Hardware (Under Feederhouse)	1
LANSS2606L	Left Row Mount	1
LANSS2606R	Right Row Mount	1
LANSS603	Storage Bracket	2
LANSS704	Twist Pin	2
LAN2600UBOLT	U-bolt 5/8" x 4.125" ID x 5.5" Long	4
LAN690830	5/8" Serrated Flange Nut	8
LAN1818A	3/8"-16 Thread Cutting Bolts	8
LANSS612R12FHHK	Folding Head Hyd SS Hose Kit	1
	Hydraulic Hose	4
	#6 Male ORB to Male ORFS straight	4
	#6 Female ORFS to Male ORFS 90°	4
	#6 ORFS Male, Male, Female Tee fitting	4

Numerical Parts List (Continued)

Part Numbers	Description	Qty
LANSS4412R12FHBH	Box of Hardware	1
LANSS400BH	CNH Mount Bag of Hardware	8
LAN2600UBOLT	U-Bolt 5/8" x 4.125" ID x 5.5" Long	2
LAN600UBOLT	U-Bolt 5/8" x 2.265" ID x 3.75" Long	2
LAN690830	5/8" Serrated Flange Nut	4
LANSS668BH	Bag of Hardware	6
LAN600UBOLT	U-Bolt 5/8" x 2.265" ID x 3.75" Long	2
LAN690830	5/8" Serrated Flange Nut	4
LANFNXC1	1/2"-13 Flanged Nyloc Nut	1
LANFNHVK	1/2"-13 x 2.5" Flanged Cap Screw	1
LANF718K	5/8" x 4.5" Carriage Bolt	16
LAN600UBOLT	U-Bolt 5/8" x 2.265" ID x 3.75" Long	4
LAN690830	5/8" Serrated Flange Nut	32
RED706K	5/8" x 1.5" Carriage Bolt	16
LAN506K	1/2" x 1.5" Carriage Bolt	8
LAN3722	1/2" Serrated Flange Nut	8
LANFFCJK	1" x 3" Clevis Pin	4
LANFWS50	1" SAE Flat Washer	4
LANFOIFO	3/16" x 2 Cotter Pin	4
LANEWPG	3/8" x 2.5" Clevis Pin	4
LANFWS58	3/4" SAE Flat Washer	4
LANFOIDJ	1/8" x 1.5" Cotter Pin	4
LAN44302	Zip Ties	12

Pictorial Parts List

					
LANSSCIH4400B (8)	LANSSB77BLK (2)		LANSSB42BLK (2)	LANSS7B05BLK (4)	LANSS612R12FHKK
					
LANSSCNH401 (2)	LANSSCNH402 (2)	LANSSCNH403 (2)	LANSSCNH404 (4)	LANSS750CYL (2)	LANSS659 (4)
					
LAN2600UBOLT (20)	LAN600UBOLT (28)	LAN690830 (0)	LANF718K (16)	RED706K (16)	LANSS650QD (6)
					
LAN706K (8)	LAN3722 (8)	LANFFCJK (4)	LANFWS50 (4)	LANF0IF0 (4)	

Pictorial Parts List (Continued)

					
LANEWPG (4)	LANFWS58 (4)	LANF0IDJ (4)	LANFNHVK (6)	LANFNXC1 (6)	LAN44302 (12)
					
LANSS2606L (1)	LANSS2606R (1)	LANSS603 (2)	LANSS704 (2)	LAN1818A (8)	

Preparation

1. Attach desired header to the combine. Lock the head to the combine.
2. Raise the head off the ground and lower the safety stop on the feeder house cylinder.
3. Set the parking brake on the combine.
4. Turn off the combine engine and remove the key.

Stalk Stomper Disclaimer

Stalk Stomper Disclaimer

The most effective use of the Lankota Stalk Stomper® is achieved by adjusting the stomper pad so that when the corn head is at its normal cutting height, the pad of the shoe is 1" above the ground. Over compression of the spring can shorten the life of the stomper spring, increase wear on the poly liner, and may result in undue damage NOT covered by Lankota's Limited Warranty.

Stalk Stomper Height Adjustment

To adjust Lankota Stalk Stomper shoes, watch this video found on YouTube: <https://youtu.be/Ukcq7NrCgpQ>

and the Lankota website: <https://lankota.com/stalk-stompers.html>

or scan the QR code to the right with a smart phone.



1. Installation

Refer to Figures 1 & 2

1. Follow the instructions in the LANSS2600XO kit.
2. Remove these rubber curtains at the back of the head:
 - Between rows 1 & 2, 2 & 3, 10 & 11 and 11 & 12
 - Behind rows 4, 5, 8 and 9

Note: it may be necessary to remove more than one.



Figure 1



Figure 2

1. Installation

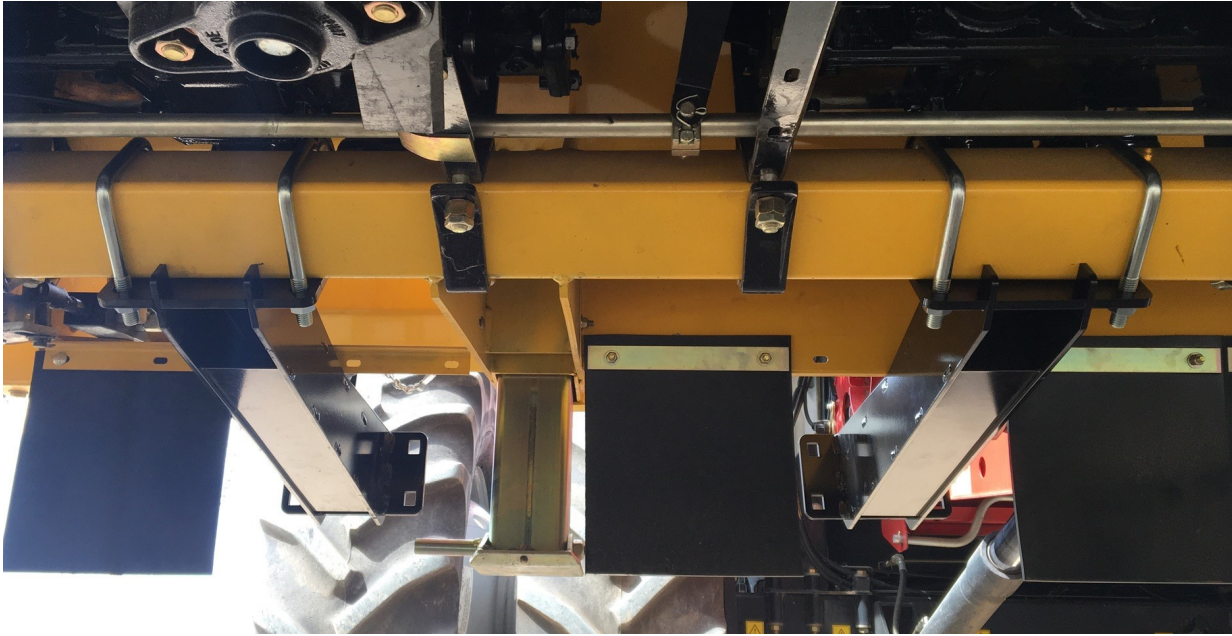


Figure 3

Refer to Figures 3 & 4

3. Install the main mounts (LANSSCIH4400B) to the frame of the head, as shown, in the area where the rubber curtains were removed.
 4. Use the 5/8" U-Bolts and nuts found in the LANSS400BH bags of hardware.
- Note: Offset the inner mounts from the rows they follow.

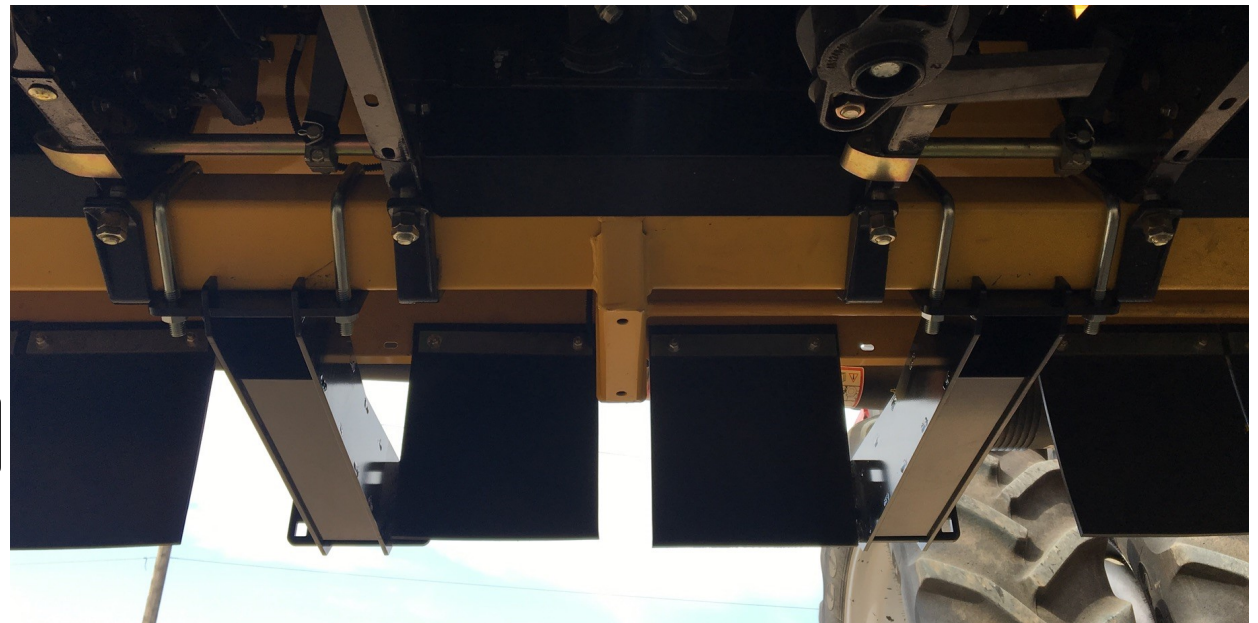


Figure 4

1. Installation



Figure 5

Figure 6

Refer to Figures 5 & 6

5. Identify which way the mounts are offset of the row. Use a LAN600UBOLT and a pair of nuts from the LANSS400BH and install the 42" toolbars to the inner pair of mounts. The U-bolts go as far from the row as possible. Tighten the hardware.
6. Mount the flip-up mounts (LANSS659) to the toolbar and main mounts with the provided 5/8" x 4.5" carriage bolts and flange nuts. Line the flip-ups with the rows.
7. Mount the pivot brackets (LANSSCNH404) to the outer main mounts. Use (4) 5/8" x 1.5" carriage bolts and flange nuts. Tighten them.



1. Installation

Refer to Figures 7 & 8

8. Loosely mount the hanger brackets (LANSS7B05BLK) to the 77" toolbar with two LAN600UBOLTS and four 5/8" flange nuts.
9. Hang the toolbar from the outer mounts, as shown, using the 3/4" x 2.5" clevis pins (LANEWPG).

Make sure the hanger brackets are oriented correctly!

10. Center the toolbar on the wing of the header.
11. Tighten the 5/8" hardware. Secure each pin in place with a 3/4" SAE flat washer (LANFWS58) and 1/8" x 1.5" cotter pin (LANFOIDJ).



Figure 7

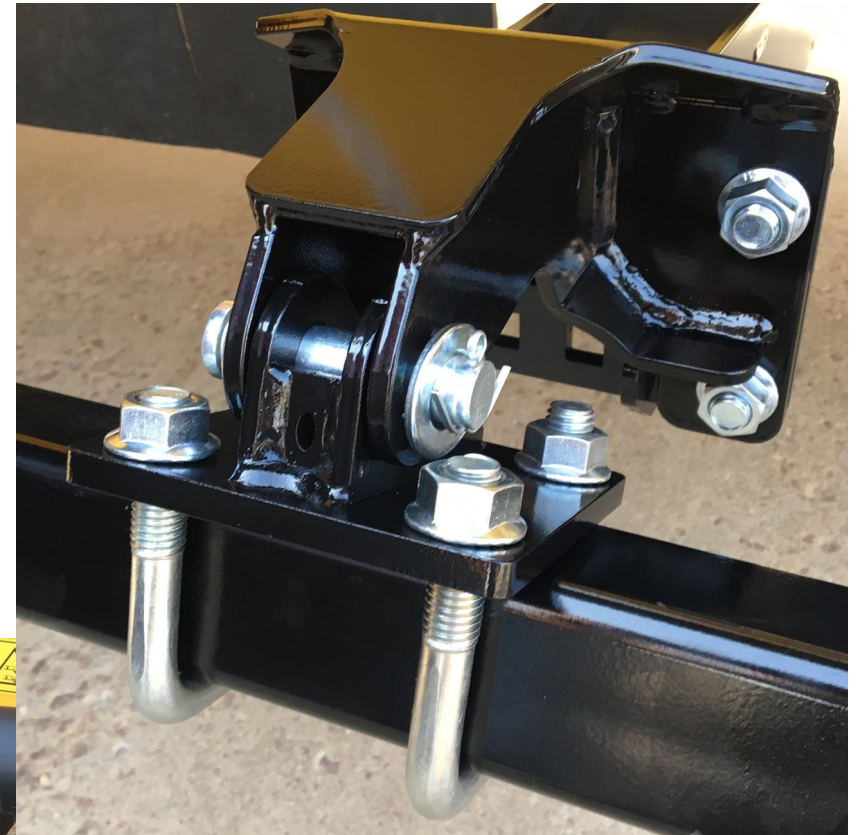


Figure 8

1. Installation

Refer to Figures 9 - 11

12. Mount the toolbar cylinder mount (LANSSCNH403) to the 77" toolbar. Mount between the mounts as shown. Use two LAN600UBOLTS and four 5/8" flange nuts. Do NOT tighten, yet.
 13. Loosen the **bolt** holding the hyd lines. Slide the cylinder bolt plate (LANSSCNH402) behind the hyd lines.
 14. Install the top cylinder mount (LANSSCNH401) to the wing brace tube as shown using (4) 1/2" x 1.5" carriage bolts and flange nuts. Slide the bolt plate against the hyd line clamp.
- Note:** When tightening the bolts, clamp the parts together around the tube and tighten the top bolts first, then tighten the bottom carriage bolts.
15. Retighten the hyd line clamp bolt.

Figure 9



Figure 10

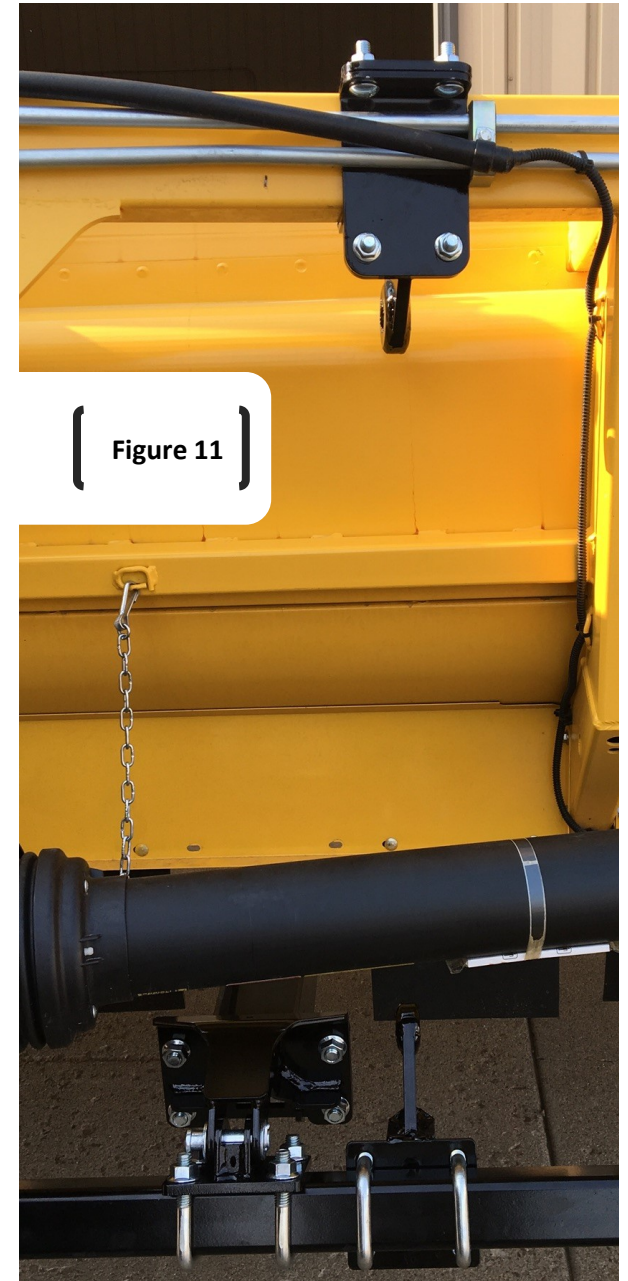


Figure 11

2. Hydraulics

Refer to Figures 12 & 13

16. Attach the cylinders to the recently installed mounts. On each end, use (1) 1" x 3" clevis pin (LANFFCJK), 1" SAE flat washer (LANFWS50) and 3/16" x 2" cotter pin (LANFOIF0).
17. The ports of the cylinder should face towards the center of the header.
18. The clevis on the end of the cylinder can be threaded in or out to adjust the angle of the bar and stalk stomper shoes.
19. Remove the plugs in the cylinders and replace them with Male ORB to Male ORFS straight fittings and tighten.
20. Connect a hose to each fitting, but leave loose.



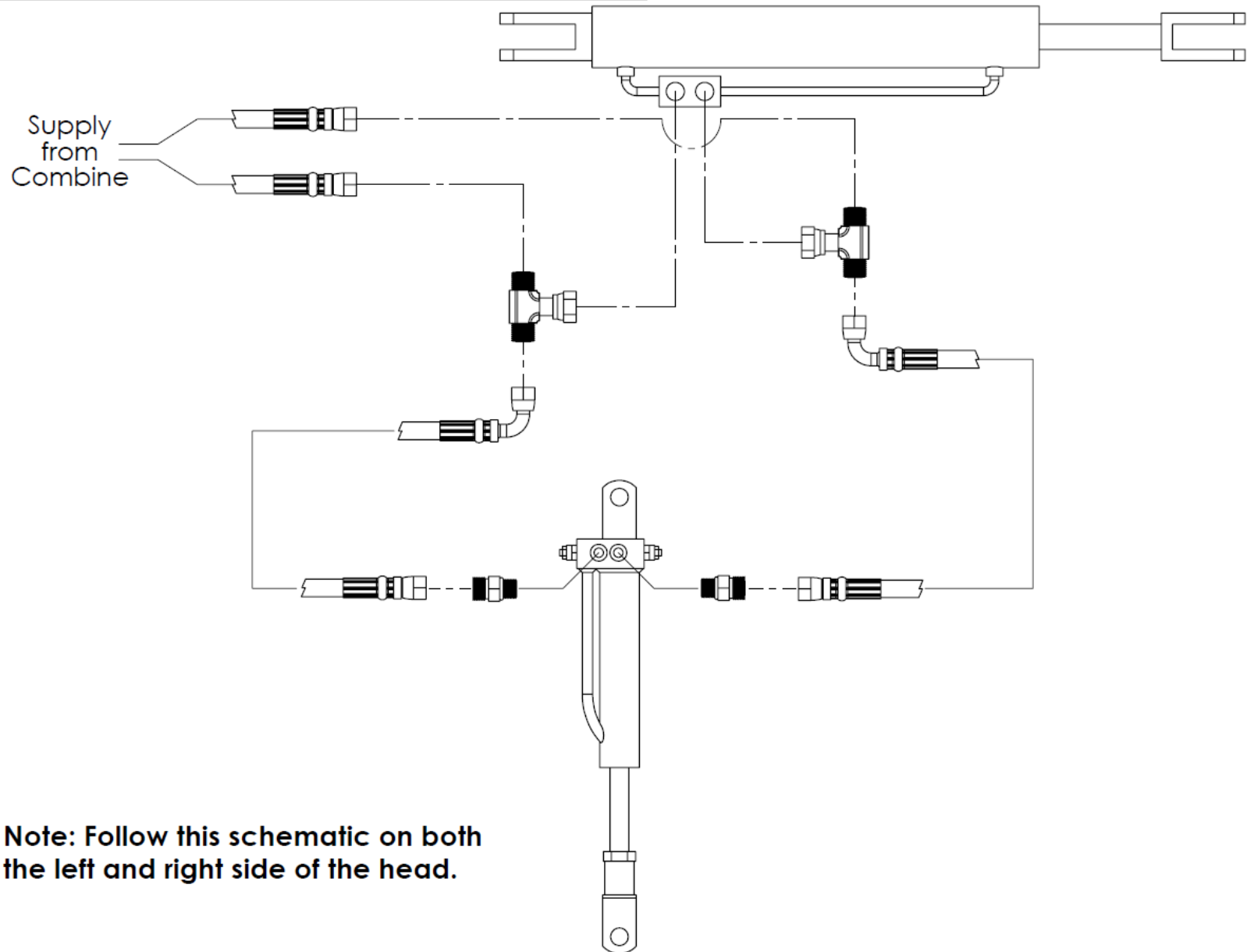
Figure 13



Figure 12

2. Hydraulics

4412F & 980CF Hydraulic Schematic



2. Hydraulics

Refer to Figures 14 & 15

21. Disconnect the short hoses from the wing cylinders and install the provided tees.
22. Reconnect the short hoses and the provided long hoses as shown.



Figure 14

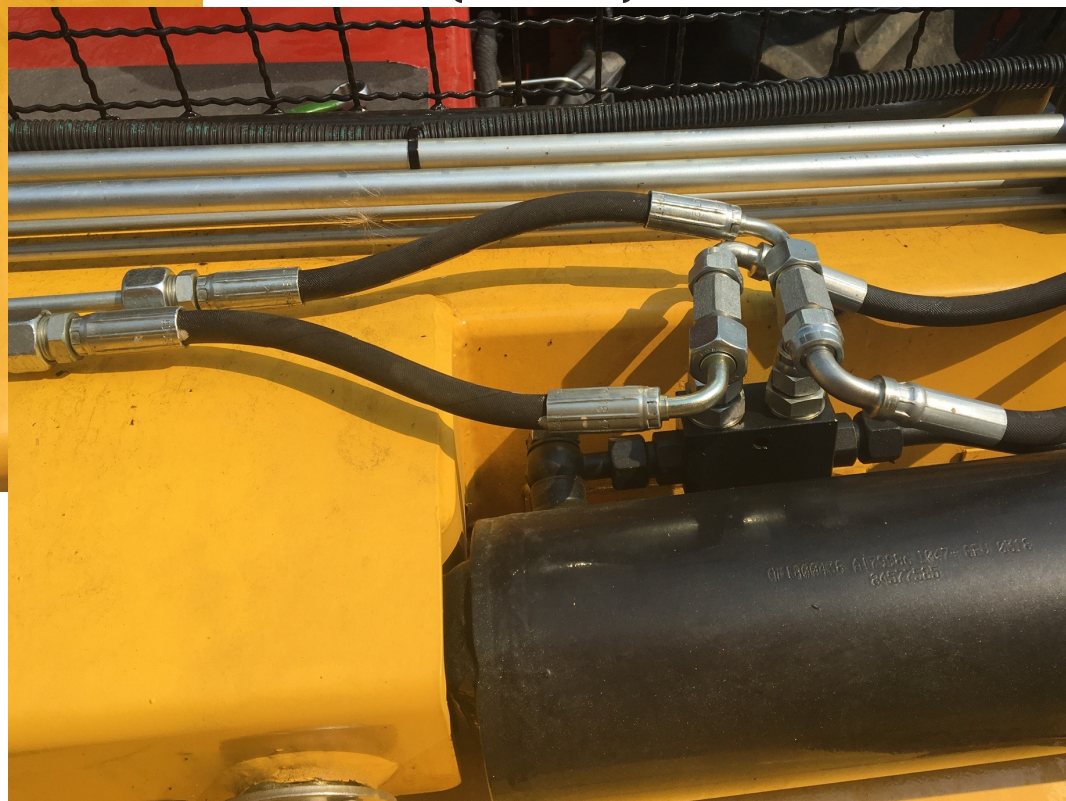


Figure 15

2. Hydraulics

Refer to Figures 16 - 18

23. Disconnect the hoses from the stomper cylinders and run them as shown being aware that there is little room between the frames when the header folds.

Note: Be sure to (re)tighten all fittings before folding the header.

Figure 16

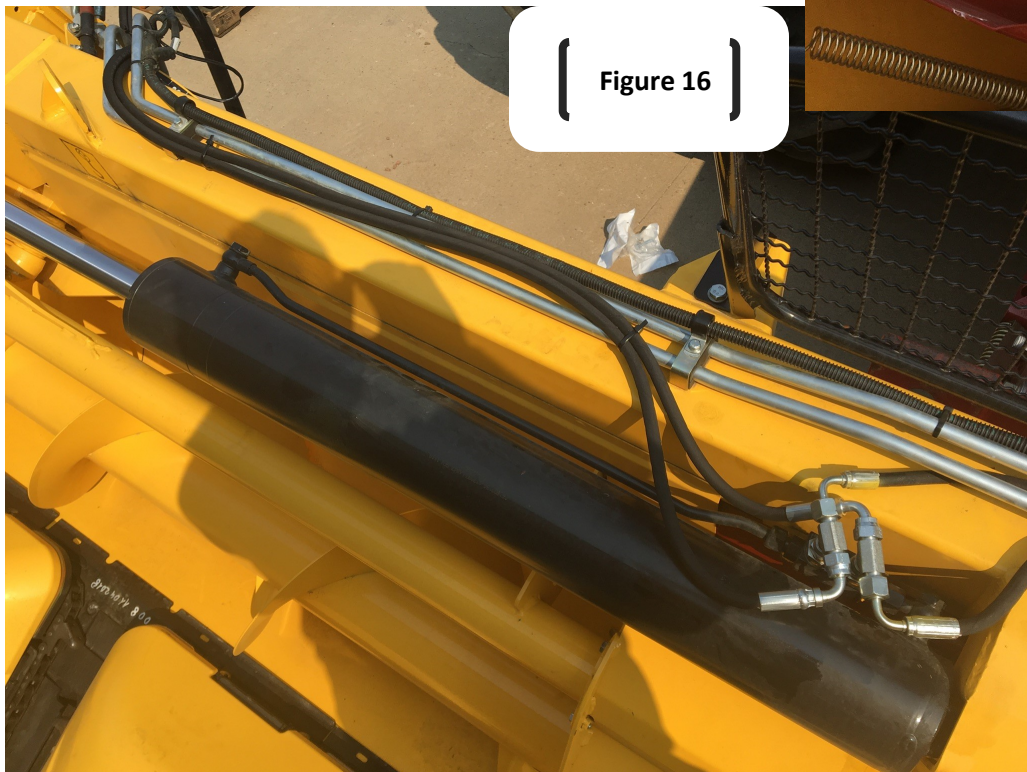


Figure 17

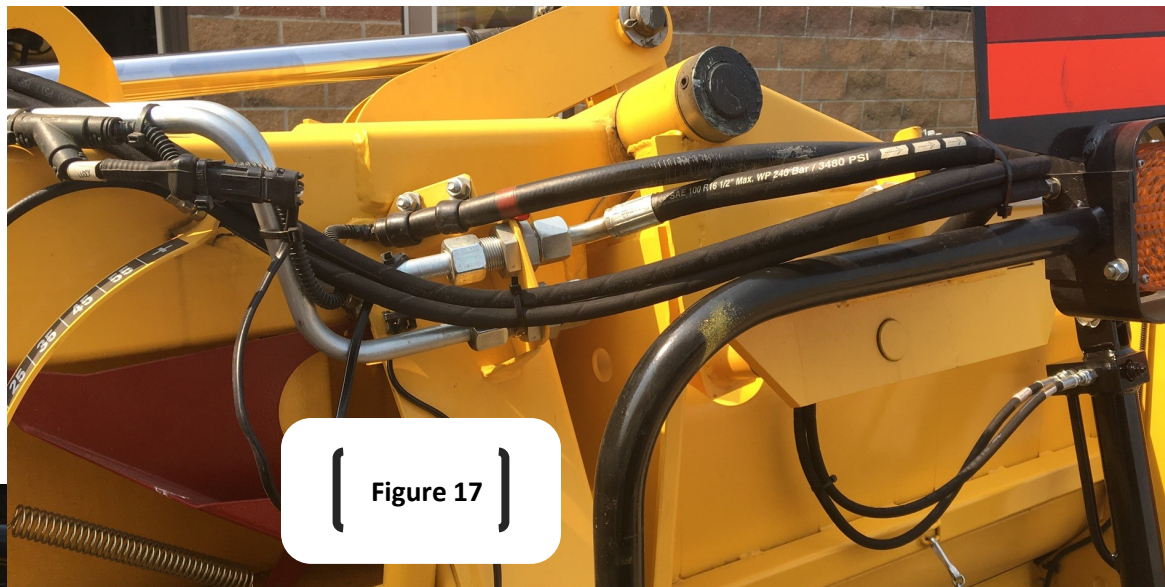
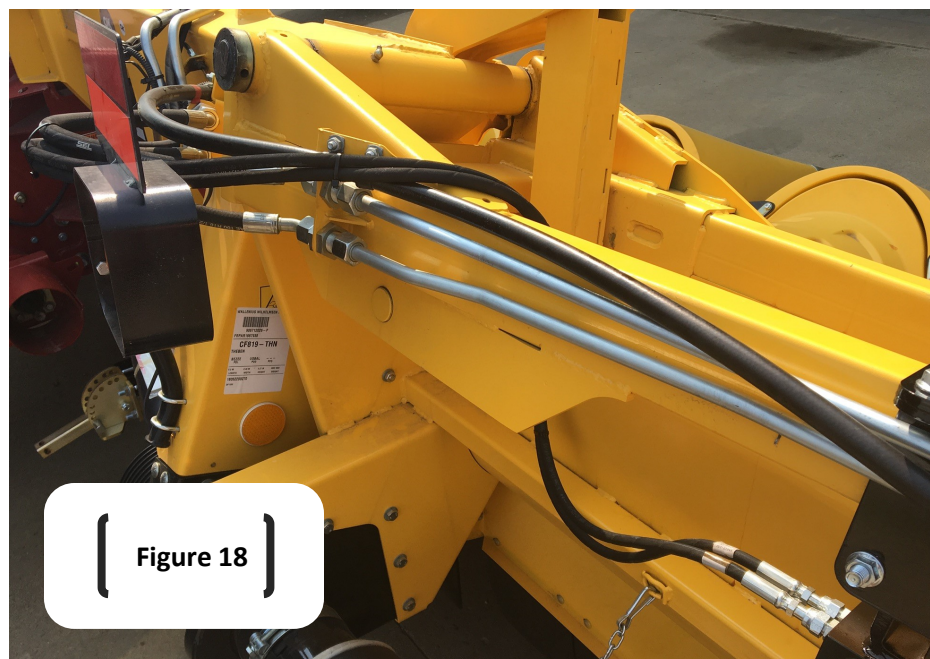


Figure 18



3. Stompers

Refer to Figures 19 & 20

24. Mount the LANSS650QD mounts to the bottom of the 77" toolbars, facing forward, directly behind the outer rows. Use the U-bolts and serrated nuts found in the LANSS668BH bags.
25. Slide shoes on and connect them with the LANSS704 pins that come with the LANSS650QD's.

Figure 19



Figure 20

3. Stompers

Refer to Figure 21

26. Slide shoes on the flip-up mounts and connect them with a 1/2" x 2.5" flange bolt and flange nyloc from the LANSS668BH bags of hardware.

Caution

When folding the header with stalk stompers for the first time, it is recommended that the header be low to the ground and there be a person on the ground watching the hoses and fittings as it folds to ensure there are no pinch points.

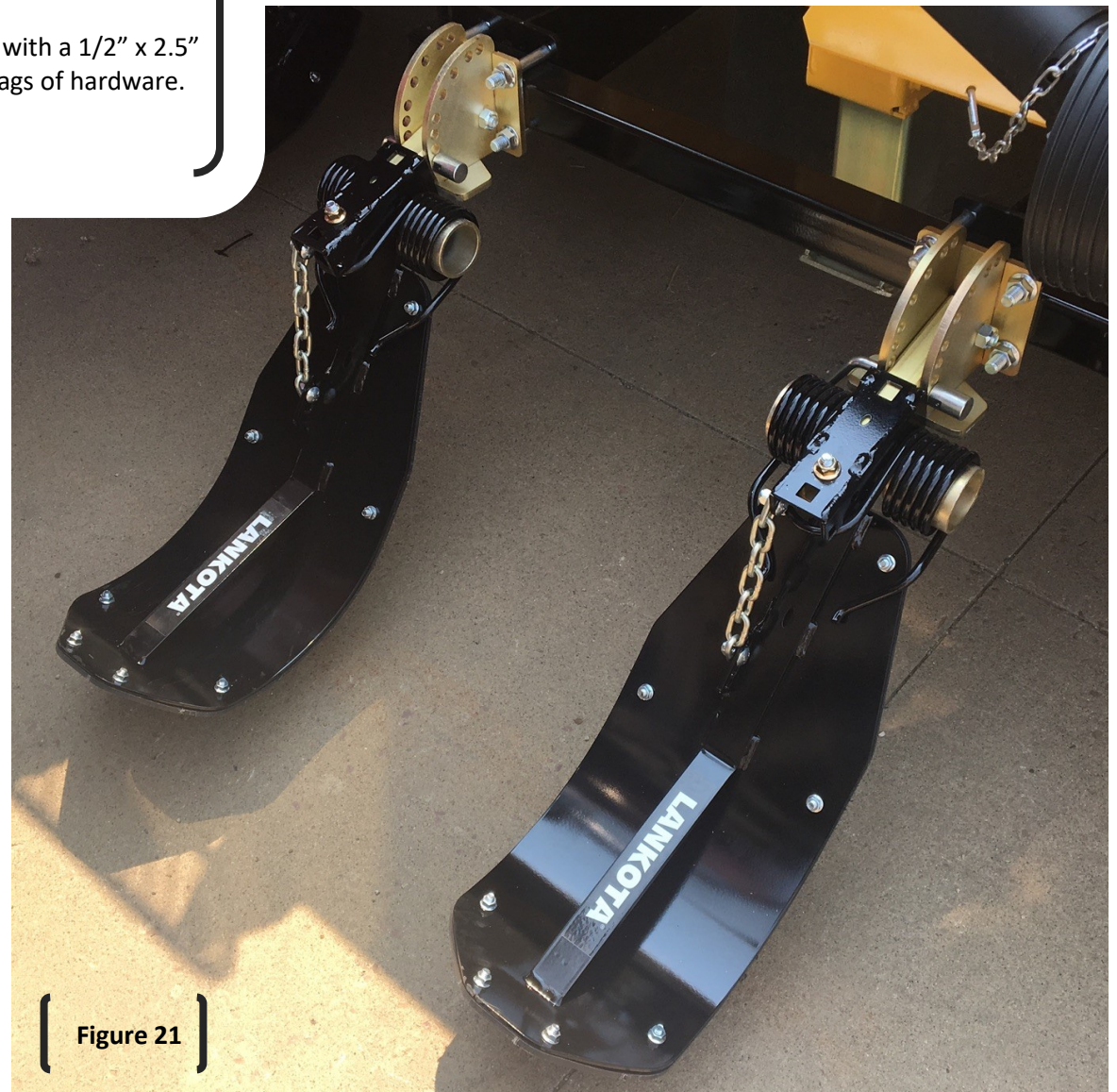


Figure 21



**For further technical assistance,
Call Lankota Inc. at:
1-866-526-5682**