

LANSS612R6F

Installation Instructions

Lankota GENERATION II Stalk Stomper® Mounting Kit for JD® 612F Series Corn Heads

6-Row Coverage

LANKOTA®

270 West Park Avenue


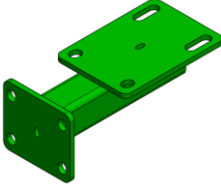



Huron, SD 57350

866-526-5682

Numerical Parts List

Part Numbers	Description	Quantity
LANSS700I	Inside Mount Plate – Grade 50	2
LANSS700M	Standard 612 FC Series Mount – Grade 50	2
LANSSB42GRN	42" Stalk Stomper® Tool Bar	2
LANSS6X	Flip Up Head Mount Kit for 600 Series Heads	1
LANSS759	Straight Flip Up Mount – Grade 50	4
LANSS612R6FBH	Box Containing Bags of Hardware	1
LANFCJ9MC	1-3/8" Hole Saw	1
LANSS600IBH	LANSS600I Bag of Hardware	2
LAN600UBOLT	U-bolt 5/8" x 2.265" ID x 3.75" Length	2
LAN690830	5/8" Serrated Flange Nut	4
LAN506K	½"-13 x 1.5" Carriage Bolt	2
LAN3722	½"-13 Serrated Flange Nut	2
LANSS600MBH	LANSS600M Bag of Hardware	2
LAN600UBOLT	U-bolt 5/8" x 2.265" ID x 3.75" Length	2
LAN079UBOLT	U-bolt 5/8" x 5.125" ID x 6.5" Length	2
LAN619UBOLT	U-bolt 5/8" x 6.188" ID x 6.5" Length	2
LAN690830	5/8" Serrated Flange Nut	8
LANSS668BH	LANSS668 Bag of Hardware	4
LAN600UBOLT	U-bolt 5/8" x 2.265" ID x 3.75" Length	2
LAN690830	5/8" Serrated Flange Nut	4
LANFNHVK	1/2"-13 x 2.5" Flanged Cap Screw	1
LANFNXC1	1/2"-13 Flanged Nyloc Nut	1

Pictorial Parts List

						
LANSS700I(2)	LANSS700M (2)	LANSSB42GRN (2)	LAN619UBOLT (4)	LAN079UBOLT (4)	LAN600UBOLT(16)	LANSS759 (4)
						
LAN690830(40)	LAN3722 (4)	LAN506K (4)	LANFNXC1 (4)	LANFNHVK (4)	LANFCJ9MC (1)	

Preparation

1. Attach desired header to the combine. Lock the head to the combine.
2. Raise the head off the ground and lower the safety stop on the feeder house cylinder.
3. Set the parking brake on the combine.
4. Turn off the combine engine and remove the key.

Installation

Refer to Figure 1

1. Attach the brackets (LANSS700I) to the bottom of the header angle bracket on each side of the feeder house opening.

Hardware:

LAN3722	1/2" Serrated Flange Nut
LAN506K	1/2" x 1.5" Carriage Bolt

Figure 1



Figure 2

Refer to Figure 2

- 2. Attach the brackets (LANSS700M) to the main header frame beam on the left and right hand side of the header within 30" of the SS600I bracket.**

Drilling a hole through sheet metal may be necessary.

Hardware:

LAN690830	5/8" Serrated Flange Nut	
LAN079UBOLT	5" U-bolt	2011 & older heads
LAN619UBOLT	6" U-bolt	2012 & newer heads

Refer to Figure 3

- 3. Attach the tube (LANSSB42GRN) to the mounts.**

Hardware:

LAN690830	5/8" Serrated Flange Nut
LAN600UBOLT	2.5" U-bolt

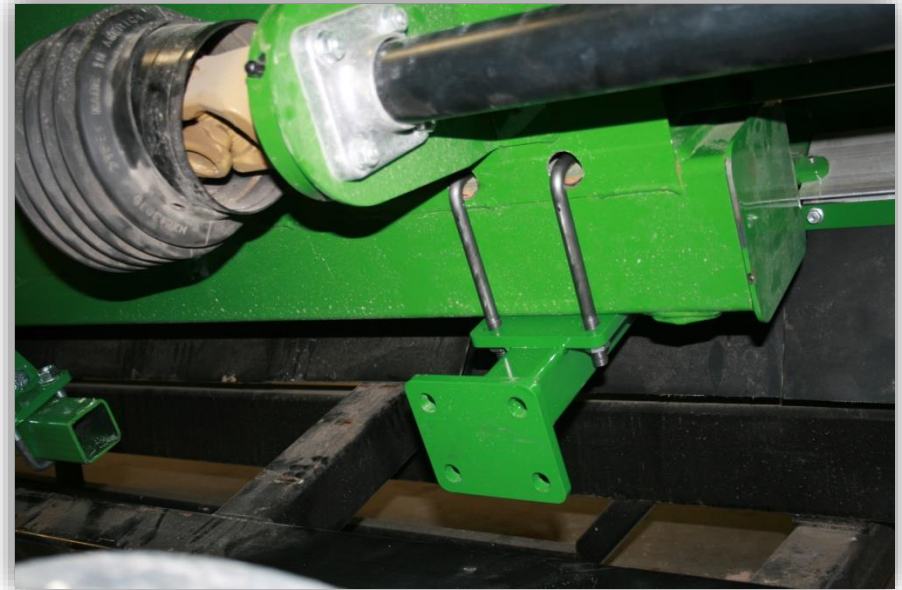
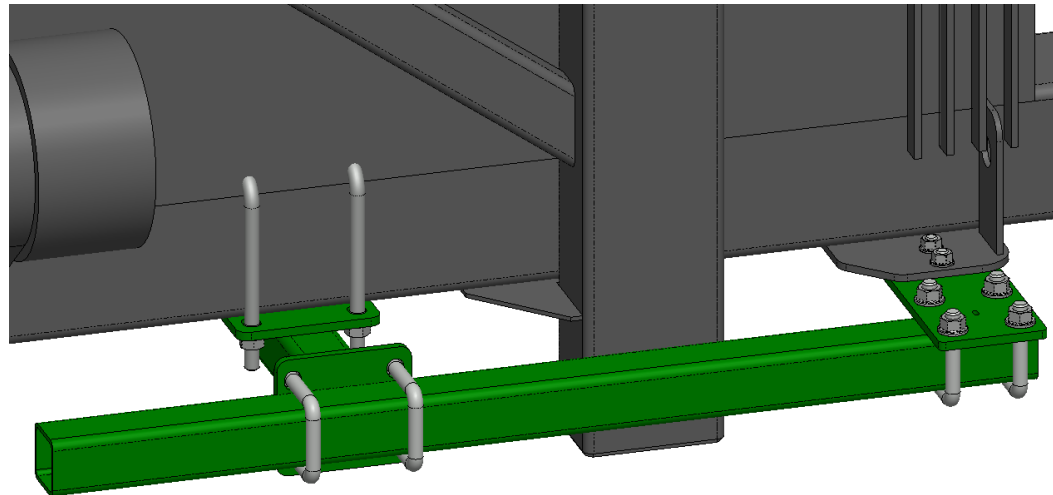


Figure 3



Refer to Figures 3 & 4

4. Mount the flip up (LANSS759) Lankota Stalk Stomper® mounts to the tool bar so the mounts are centered in line with the row. Tighten all hardware.

Hardware:

LAN690830	5/8" Serrated Flange Nut
LAN600UBOLT	2.5" U-bolt

Note: The flip up brackets (LANSS759) are installed on the back of the tool bar only.

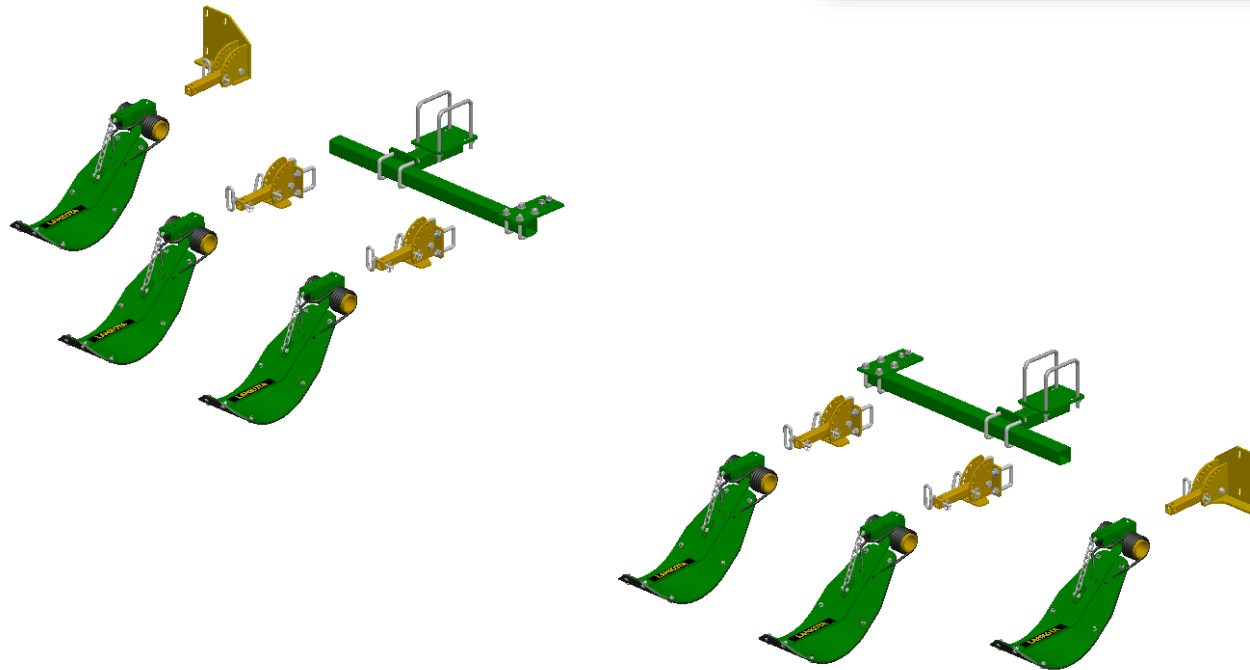
Figure 4



Figure 5

Refer to Figure 5

5. Using the instructions provided with the flip up head mount kit (LANSS6X), install the LANSS6XR and LANSS6XL on the lower tube of the outer wing frames of the folding header.
6. When using flip up mounts (LANSS759), bolt the Stalk Stomper® shoe (LANSS755) to the flip up mount (LANSS759) using 1 flanged bolt (LANFNHVK) and 1 nyloc nut (LANFNXC1) found in the bags of hardware marked (LANSS668BH). Tighten and secure. Use the flip up option of the flip up mounts (LANSS759) to clear tires on trailers.



Stalk Stomper Disclaimer

Stalk Stomper Disclaimer

Lankota Stalk Stomper shoes must be adjusted so that the stomper pad is at least 1.0" above ground level when the combine corn head is at its normal cutting height. Over compression of the spring can shorten the life of the spring, increase wear on the poly liner, and may result in undue damage NOT covered by Lankota's Limited Warranty.

For further technical assistance

Call Lankota Inc. at:

1-866-526-5682