

# LANSSCRPK

## Installation Instructions

John Deere 90 Series Poly Corn Head Hood Protectors

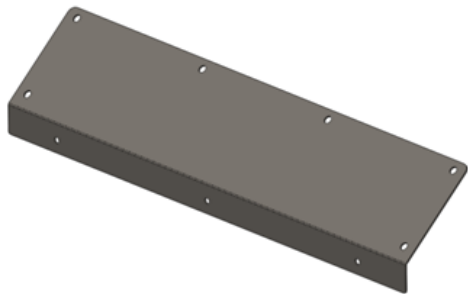
# LANKOTA®

270 West Park Avenue  
Huron, SD 57350  
866-526-5682

## Numerical Parts List

<b>Part Numbers</b>	<b>Description</b>	<b>Qty</b>
LAN1130	Stainless Steel Corn Row Plate	2
LAN030114048	3/4" Philips Pan Head Screw	12
LAN030112032	1/2" Philips Pan Head Screw	6

## Pictorial Parts List



LAN1130 (2)



LAN030114048 (12)



LAN030112032 (6)

# Kit Installation

## Refer to Figure 1

1. Either completely remove the hood and snout assembly from head or raise hood and snout assembly to maintenance/storage position.
2. Fit stainless steel corn row plate (LAN1130) into position as shown in Figure 1.
3. Install the three smaller side screws (LAN030112032) into the short side of the plate.

**Note:** A battery powered drill works great, but use on a very low setting and hand tighten a few screws until the adequate setting on the drill is found without stripping the poly.

4. Form plate over the edge and squeeze flat to top of the hood for a tight fit.
5. Install the six larger screws (LAN030114048) on the top half of stainless steel corn row plate.

## Refer to Figure 2

6. Repeat steps 2 - 5 for remaining hoods and stainless steel corn row plates.
7. Lower hoods back to operating position or reinstall if removed from head in step 1.
8. Hoods should have no obstruction with gathering chain tracks as shown in Figure 2.

**For further technical assistance,**

**Call Lankota Inc. at:**

**1-866-526-5682**

Figure 1

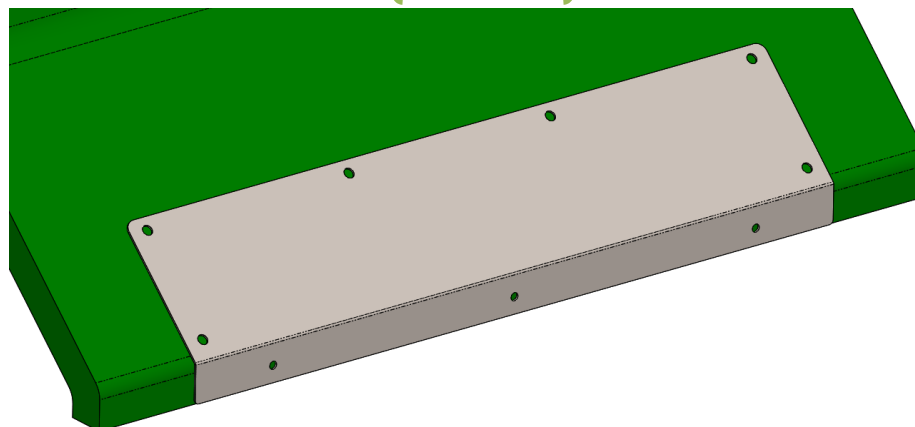


Figure 2

