

# LANTB21429

## Installation Instructions

Lankota Toolbox for CIH® Quadtrac/Rowtrac or Wheeled 350, 370, 400, 420, 450, 470, 500, 540, 550, 580, 600, 620

&

New Holland® SmartTrax II or Wheeled T9.600, T9.615, T9.645, T9.670, T9.700





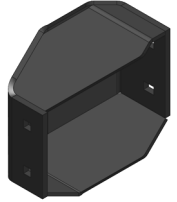

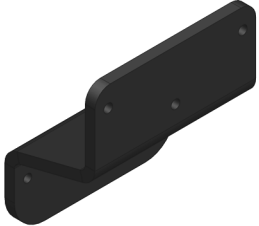
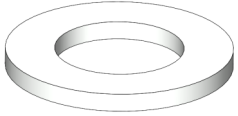



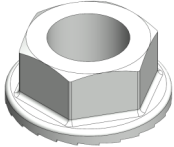
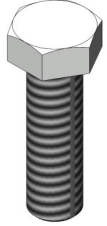
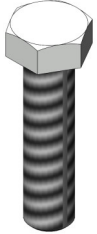
# LANKOTA®

270 West Park Avenue  
Huron, SD 57350  
866-526-5682

# Numerical Parts List

<b>Part Numbers</b>	<b>Description</b>	<b>Qty</b>
LANTBJD200BLK	Toolbox Assembly	1
LANTB030	Toolbox Mount Arm Right	1
LANTB030M	Toolbox Mounting Arm Left	1
LANTB031	Mounting Spacer Right	1
LANTB031M	Mounting Spacer Left	1
LANSR063	Rowtrac® Weight Spacer	2
LANSSQT231	OEM Side Toolbox Mount	2
LANF-FW-M20	M20 Flat Washer	6
REDWU58	3/4" Flat Washer	6
LAN18000	3/8" Flat Washer	6
LANFRCRF	M20 x 220 Hex Bolt	6
LAN506K	1/2" x 1 1/2" Carriage Bolt	4
LAN3722	1/2" Serrated Flange Nut	4
LAN3718	3/8" Serrated Flange Nut	6
LANFB810	3/4" x 2 1/2" Hex Bolt	6
REDB306	3/8" x 1 1/2" Hex Bolt	6
LANFXFY9	3/4" Center Lock Nut	6

# Numerical Parts List

					
LANTBJD200BLK (1)	LANTB030 (1)	LANTB030M (1)	LANTB031 (1)	LANTB031M (1)	
					
LANSR063 (2)	LANSSQT231 (2)	LANF-FW-M20 (6)	REDWU58 (6)	LAN18000 (6)	LANFRCRF (6)
					
LAN506K (4)	LAN3722 (4)	LAN3718 (6)	LANFB810 (6)	REDB306 (6)	LANFXFY9 (6)

# Kit Installation

Refer to Figures 1 & 2

1. If the tractor is equipped with a tow cable located on one of the outside stowage holes, follow **Steps 2-3**, otherwise skip to **Step 4**.
2. Remove the cable from the stow bracket, open the hood and loose the nut holding the stow bracket.
3. Move the stowage bracket to one of the center stowage holes and tighten the hardware.

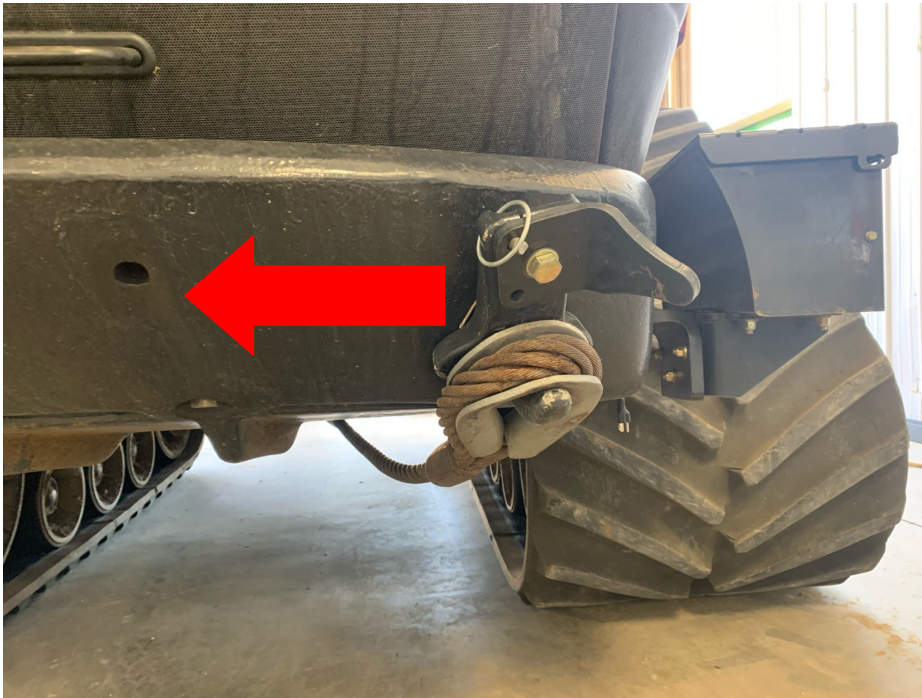


Figure 1



Figure 2

# Kit Installation

## Refer to Figures 3 & 4

- Starting on the driver side of the front of the tractor, open the hood and remove the three factory bolts and replace them with three M20 x 220 bolts (LANFRCRF) and M20 washers (LANF-FW-M20). **Note: The radiator needs to be folded down to replace the middle bolt. If the tractor is not equipped with a chin weight replace the bolts with three 3/4" x 2 1/2" hex bolts (LANFB810).**

**DO NOT REMOVE ANY OTHER CHIN WEIGHT BOLTS AT THIS TIME**



Figure 3



Figure 4

# Kit Installation

Refer to Figures 5 - 7

5. Hold the toolbox mounting arm (LANTB030M) up to the previously replaced bolts. **Note:** One set of mounting holes is available for narrow frame tractors, while the other is available for wide frame tractors.

Note: For narrow frame tractors, use the mounting spacer LANSR063 over the last bolt between the mounting arm and the chin weight (see Figure 7).

6. Re-use the original washers and nuts to secure the toolbox mounting arm. **For tractors without a chin weight, bolt the mounting arm directly to the tractor frame with the 3/4" hardware, 3/4" center-lock nuts (LANFXFY9) and 3/4" washers (REDWU58).**
7. Tighten all three bolts/nuts.



Figure 5



Figure 6



Figure 7

# Kit Installation

Refer to Figures 8 - 10

- Using two 1/2" x 1 1/2" carriage bolts (LAN506K) and 1/2" serrated flange nuts (LAN3722), attach the mounting spacer (LANTB031M) to the mounting arm (LANTB030M) in the correct holes depending on the frame width of the tractor (see below). Tighten all hardware.

**Note:** Instructions show toolbox installation on a wide frame tractor.



Figure 8



Figure 9



Figure 10

# Kit Installation

## Refer to Figures 11 & 12

9. Repeat **Steps 4 - 8** on the opposite (passenger) side of the tractor.
10. The center to center distance between the mounting holes for the toolbox (between the mounting spacers LANTC031 & LANTB031M) should be  $38 \frac{5}{8}$ ".
11. Using a forklift or a person on each end of the toolbox, hold the toolbox (LANTBJD200BLK) up to the mounting holes at the desired height. Before opening the toolbox lid all the way, be sure it will not contact the hood of the tractor.



Figure 11



Figure 12



# Kit Installation

**Refer to Figures 13 & 14**

12. If the lid will contact the hood or comes close (within 1"), adjust the end of both the gas struts to the top mounting hole.
13. Using four 1/2" x 1 1/2" carriage bolts, 1/2" washers, and 1/2" nyloc nuts, bolt the toolbox to the mounting spacers. Put bolts in the other four open holes in the back of the toolbox to prevent dirt and debris from entering.



**Figure 13**



**Figure 14**

# Kit Installation

## Refer to Figure 15

If the tractor is not equipped with a chin weight and the OEM toolboxes are to be used, attach the brackets (LANSSQT231) to the sides of the toolbox mounting brackets (LANTB030 and LANTB030M) using three 3/8" x 1 1/2" hex bolts (REDB306), 3/8" washers (LAN18000) and 3/8" serrated flange nuts (LAN3718) on each side.

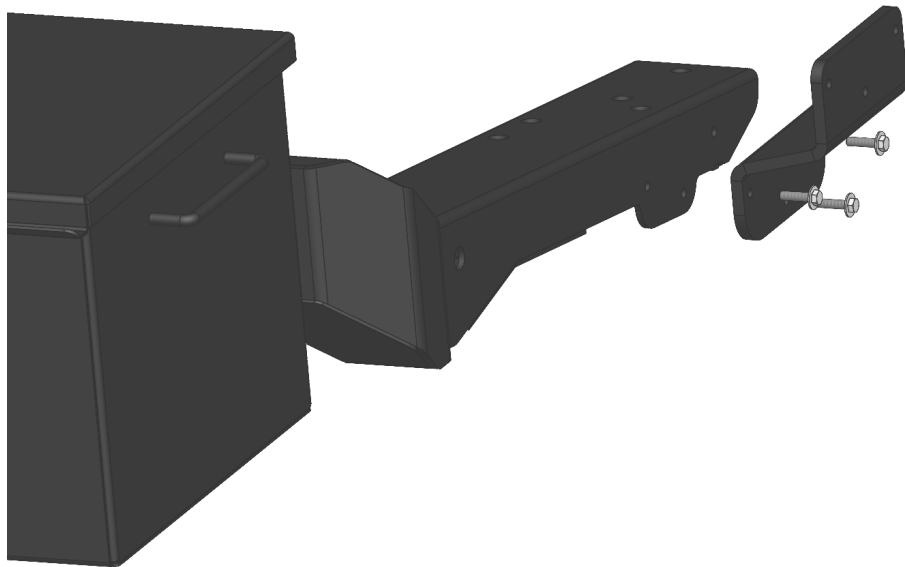


Figure 15



**For further technical assistance, Call  
Lankota Inc. at:1-866-526-5682**