

# LAN84108R

## Installation Instructions

Converts 90 Series Corn Heads with Hydraulic Deck Plates & Corn Reel to Single Point Combines

# LANKOTA®

**270 West Park Avenue**

**Huron, SD 57350**

**866-526-5682**

# Numerical Parts List

| <b>Part Numbers</b> | <b>Description</b>  | <b>Quantity</b> |
|---------------------|---|-----------------|
| LAN25162*           | Hose Clamps   | 2               |
| LAN175880*          | Snap Ring   | 1               |
| LAN14M7298*         | M8 Flange Nut   | 2               |
| LAN18A*             | 3/8" x 1.0" Carriage Bolt   | 4               |
| LAN3718*            | 3/8" Serrated Lock Nut  | 4               |
| LAN03M7185*         | M8 x 25mm Carriage Bolt   | 2               |
| LAN202510*          | Velcro Strap  | 3               |
| LAN6FF*             | Hydraulic Cap   | 2               |
| LAN1JS4388*         | 1/2" Hydraulic Hose Coupler   | 1               |
| LAN1JS43108*        | Hydraulic Fitting   | 1               |
| LAN166997A          | Multi-Coupler Block with 2 small (blue) and 2 Large Couplers (Red & Yellow) | 1               |
| LAN5250906          | Electrical Wire Harness   | 1               |
| LAN204828           | Mounting Bracket  | 1               |
| LAN169707           | 25.5" x 1/4" Hydraulic Hose   | 2               |

*\*included in bag of hardware.*

# Pictorial Parts List

|  |   |   |  |   |
|--|---|---|--|---|
|  <p>LAN25162(2)*</p>    |  <p>LAN175880 (1)*</p> |  <p>LAN14M7298 (2)*</p> |  <p>LAN18A (4)*</p>     |  <p>LAN3718 (4)*</p>     |
|  <p>LAN03M7185 (2)*</p> |  <p>LAN202510 (3)*</p> |  <p>LAN6FF (2)*</p>     |  <p>LAN1JS4388 (1)*</p> |  <p>LAN1JS43108 (1)*</p> |
|  <p>LAN166997A (1)</p>  |  <p>LAN5250906 (1)</p> |  <p>LAN204828 (1)</p>   |  <p>LAN169707 (2)</p>   |   |

# Preparation

1. Raise the feeder house, lifting the corn head completely.
2. Shut off the engine, set the parking brake, and lower the safety stop.
3. Always remove paint from areas to be welded to avoid toxic fumes. Always paint, grind, or weld in well ventilated area.

## 1. Installation of Multi-Coupler Block

### Refer to Figure(s) 1.1 & 1.2

- 1.1 Disconnect hose from left-hand hydraulic coupler.
- 1.2 Install cap (LAN6FF) onto left hand hydraulic coupler.
- 1.3 Disconnect hose from right hand hydraulic coupler.
- 1.4 Install cap (LAN6FF) onto right hand hydraulic coupler.

Figure 1.1

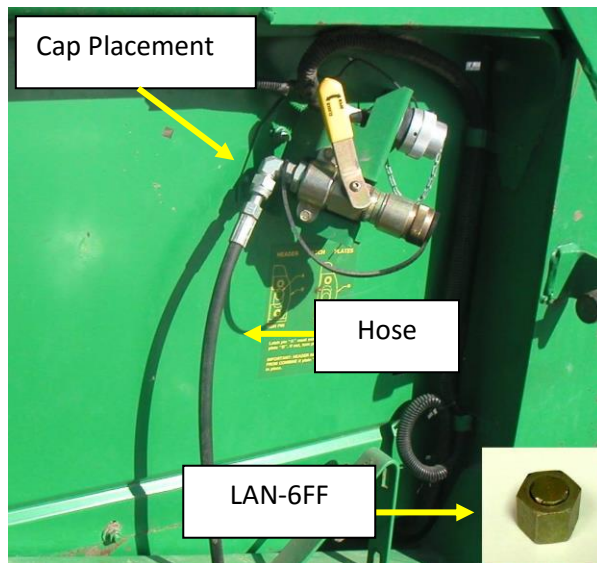
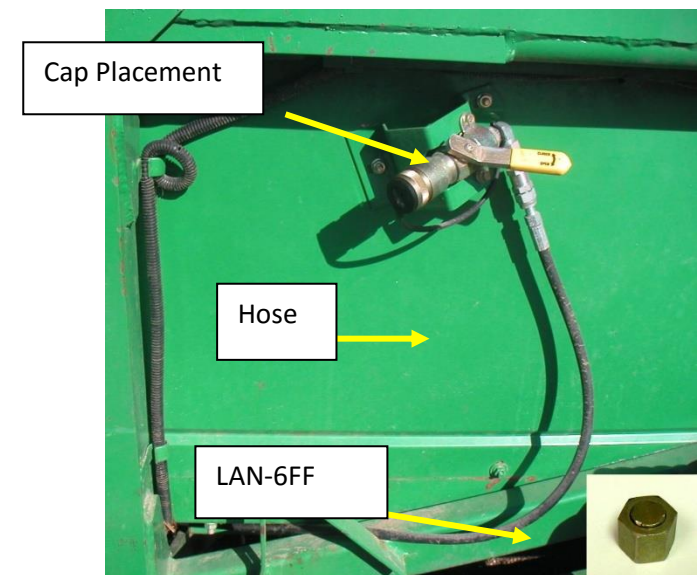


Figure 1.2



**Refer to Figure 1.3**

1.5 Pull right hand hydraulic hose down through opening on the right hand side of feeder house opening.



## 2. Corn Head Shield

### Refer to Figure(s) 2.1, 2.2 & 2.3

- 2.1 Remove nuts and right-hand shield under corn head.
- 2.2 Route the right hand hose to left-hand side of corn head, reinstall shield and retain with nuts removed earlier.
- 2.3 Remove nuts and left-hand shield under corn head.
- 2.4 Route the right-hand hose along with existing left-hand hose. Re-install shield with the nuts removed earlier.
- 2.5 Route right-hand hose up through opening.

Figure 2.1

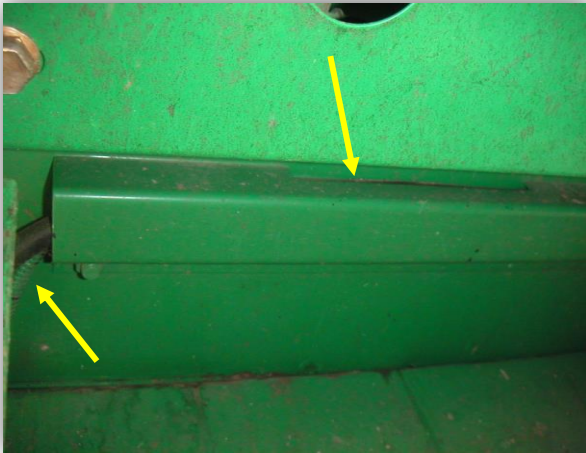


Figure 2.2

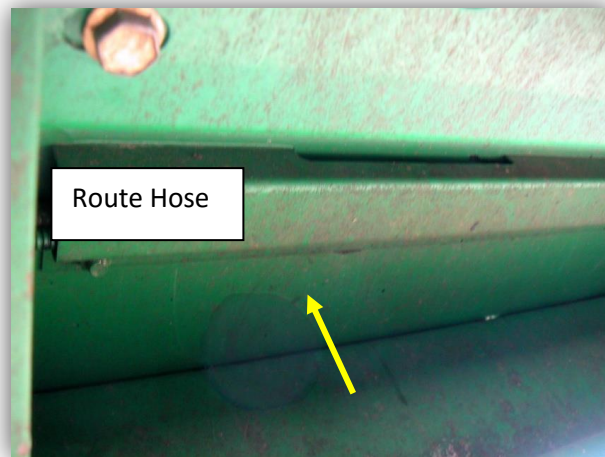


Figure 2.3



## 3. 16 Pin Electrical Heads (1999 and earlier)

**(For heads Model Year 2000 and after skip to 31 Pin Electrical Heads)**

**Refer to Figure(s) 3.1 & 3.2**

3.1 If older model heads with 16 Pin electrical cables are to be converted to 60 series combines, two adapter cables must be used. LANEC100 (16 pin to 31 pin) plus LAN5250906 (31 pin single point hookup).

**NOTE:** When utilizing LANEC100 in this application, you must identify and cut the wires 16, 17 & 18. Tape cut ends.

Figure 3.1



Figure 3.2



## 4. 31 Pin Electrical Heads

### Refer to Figure 4.1

4.1 Attach electrical cable provided in the kit (LAN5250906) to existing 31 pin connection on the head.

Figure 4.1





## 5. Hose and Harness Extension

### Refer to Figure 5.1

- 5.1 Attach the hose extensions (LAN169707) to the left and right side hoses.
- 5.2 Install left-hand hose extension (LAN 169707) onto multi-coupler at connector with dark blue locator.
- 5.3 Install right-hand hose extension (LAN 169707) onto multi-coupler at connector with light blue locator.
- 5.4 Install electrical harness connector into multi-coupler and retain with snap ring (LAN175880).
- 5.5 Hydraulic fittings, LAN1JS4388 and LAN1JS43108 are provided to attach existing corn reel drive hoses with  $\frac{1}{2}$ " inside diameters to the single point block. If fittings are required to accommodate hoses to hydraulic block, simply cut off and discard existing hose ends and crimp on fittings supplied in this kit for a leak tight connection. The hydraulic fitting (LAN1JS4388) should be attached to the **REEL DRIVE PRESSURE** hose then connected to the **YELLOW** coupler in the single point connector block. The hydraulic fitting (LAN1JS43108) should be attached to the **REEL DRIVE RETURN** hose then connected to the **RED** coupler in the single point connector block. Tighten and secure all fittings.



Figure 5.1

## 6. Mounting Storage Bracket for Single Point Coupler

### Refer to Figure 6.1

- 6.1 Find suitable location for the storage bracket on the rear left side of the header.
- 6.2 Be sure to find a spot that does not stretch the hoses too tight.
- 6.3 Mark one hole on the storage bracket and drill hole using 3/8" bit.
- 6.4 Align storage bracket to run parallel to top beam of head. Mark and drill the other 3 holes.
- 6.5 Secure bracket with carriage bolts (LAN18A) and nuts (LAN3718).
- 6.6 Retain hose extensions to back sheet metal with clamps (LAN25162), carriage bolts (LAN202073) and nuts (LAN202073A). Simply position the holes and clamps in area easily accessible. Use Velcro straps (LAN202510) to take up extra slack in hoses.

**For further technical information, you may contact Lankota at: 1-866-526-5682**

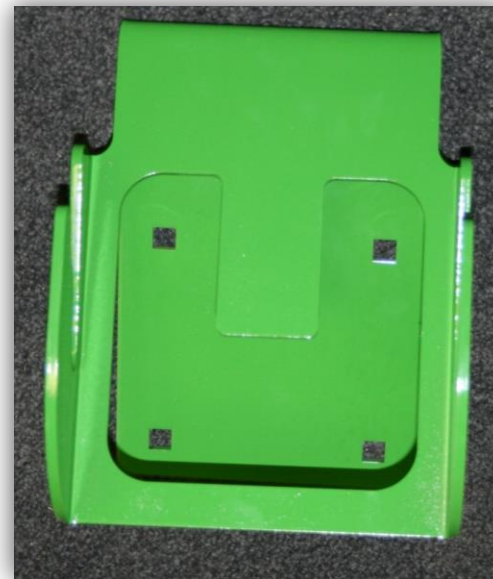


Figure 6.1