

LAN84214-N

Installation Instructions

Feeder House Enclosure and Hook Assembly Kit for Narrow Bodied Level-Land Combines

Narrow models include: 9400, 9410, 9500, 9510, 9450, 9550 and all STS Combines

LANKOTA®

270 West Park Avenue
Huron, SD 57350
866-526-5682

Numerical Parts List

Part Numbers	Description	Qty
LAN203948	Deflector Drum Assembly LH	1
LAN203949	Deflector Drum Assembly RH	1
LAN204628A	Single Hook Assembly Bracket	2
LAN204918	Shim	4
LAN204516	Shield Drum Narrow	1
LANFHW22	35/64 Drill Bit	1
LANFT6NP	M16-2.0 Tap	1
LAN84214BH	Bag of Hardware	1
LAN19M8549	M16 x 60mm Counter Sunk Screw	4
LAN19M7784	M10 x 20mm Flange Screw	10
LAN14M7296	M10 Flange Nut	10

For further technical assistance,

Call Lankota Inc. at:

1-866-526-5682

Pictorial Parts List

 <p>LAN203948 (1)</p>	 <p>LAN203949 (1)</p>	 <p>LAN204628A (2)</p>	 <p>LAN204918 (4)</p>
 <p>LAN204516 (1)</p>	 <p>LAN19M8549 (4)</p>	 <p>LAN19M7784 (10)</p>	 <p>LAN14M7296 (10)</p>
<p>LAN204552 (1)</p>	 <p>LANFT6NP (1)</p>	 <p>LANFHW22 (1)</p>	

Preparation

1. Park combine on level ground.
2. Raise the feeder house until it is level.
3. Lower the safety stop on the feeder house cylinder, if possible.
4. Set the parking brake on the combine.
5. Turn off the combine engine and remove the key.

Kit Installation

Refer to Figure 1

1. Remove beam supports where shown with arrows. Mark the side and number of shims used as you can reuse them or use the supplied shims with the kit using the same number as removed.
2. After removing beam supports, ensure the bolts are the same size as the counter sunk bolts (LAN19M8549) supplied in this kit. If they are not the same size, drill out the holes using a 9/16 drill bit and tap the holes using a M16-2.0 tap.

Figure 1



Kit Installation

Refer to Figures 2 & 3

3. Remove the five nuts and bolts from top deflector and the two carriage bolts on the bottom left and right side as shown with arrows.
4. Remove entire deflector assembly. This is done by lifting the assembly upwards.

Figure 2



Figure 3



Kit Installation

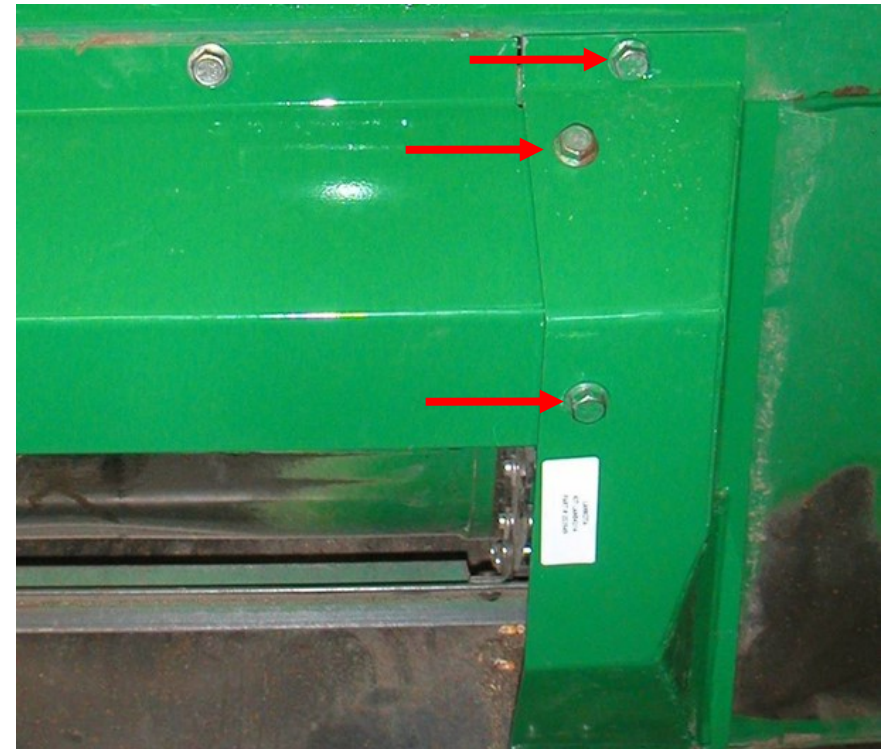
Refer to Figures 4 & 5

5. Align the three holes on the top plate (LAN204516) with the feeder house and attach using the three bolts (LAN19M7784) and flange nuts (LAN14M7296) provided.
6. Attach side deflectors, (LAN203948)-Left Side & (LAN203949)-Right Side, to feeder house and top deflector using 3 bolts (LAN19M7784) and 3 flange nuts (LAN14M7296) on each side.

Figure 4



Figure 5



Kit Installation

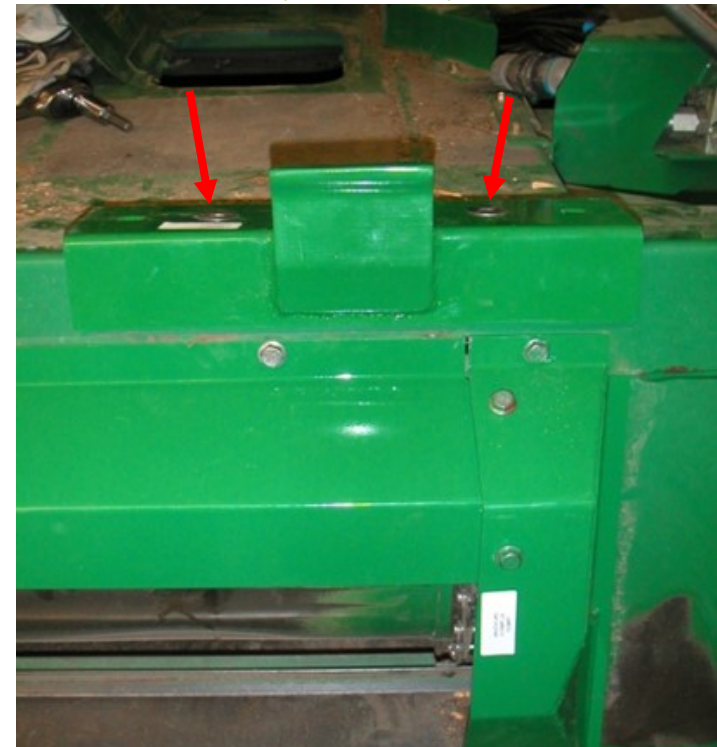
Refer to Figures 6 & 7

7. Reinstall the two carriage bolts and nuts at the bottom of each side deflector.
8. Replace shims under beam supports that were removed in step 2 or use new shims (LAN204918) provided with kit. Ensure the same level and height as before.
9. Attach Hook Assembly Brackets (LAN204628) to the feeder house using the four countersunk bolts (LAN19M8549) supplied with kit.

Figure 6



Figure 7



Note

Complaint: New countersunk beam support bolts will not fit in original holes.

Action: In earlier model combines, the beam supports on the top of the feeder house may be attached to the feeder house with M12 x 50mm bolts. On later model combines the supports are attached with M16 x 60mm bolts. In this kit, we supply M16 x 40mm (LAN19M8549) bolts to attach the new hook assemblies (LAN204628) to the feeder house. If beam support retaining nuts are not metric 16 (M16), you must drill out holes to a size of 14.25mm +/- 0.25mm and tap to a thread size of 16mm with a 2mm thread pitch (M16-2.0).