

LANBS24576

Installation Instructions

Lankota Bean Saver Top Brush Kit for JD® HD Header

LANKOTA®

**270 West Park Avenue
Huron, SD 57350
866-526-5682**

Numerical Parts List

Part Numbers	Description	Qty
LANBSHD001	JD HD Brush Mounting Bracket	2
LANBSHD002	JD HD Center Support Bracket	1
LANBS6FD3775	Bean Saver Brush—37.75"	2
LANBS6FD02-03	Brush Holder - Bottom	2
LANBS6FD02-04	Brush Holder - Top	2
LANBSFLX08A	Beam Clamp A	2
LANBSFLX08B	Beam Clamp B	2
LANF0DNU	10-24 Nyloc Nut	12
LANMCHN-40	112lb Neodymium Cup Magnet	12
LANFH1H2M	10-24 x 7/8" Flat Head Screw	12
LANFHN0MJ	Rubber Washer	12
LANNAS2	5/16" Serrated Flange Nut	8
LANBSBH	Bag of Hardware	4
LANFXG26	5/16" x 3/4" Carriage Bolt	28
REDKRJ8	5/16" Top Lock Nut	28

Preparation

1. Lower the reel and move forward as far as possible.
2. Set the header on the ground or a header trailer.
3. Unhook the head from the combine and back it away.

Pictorial Parts List

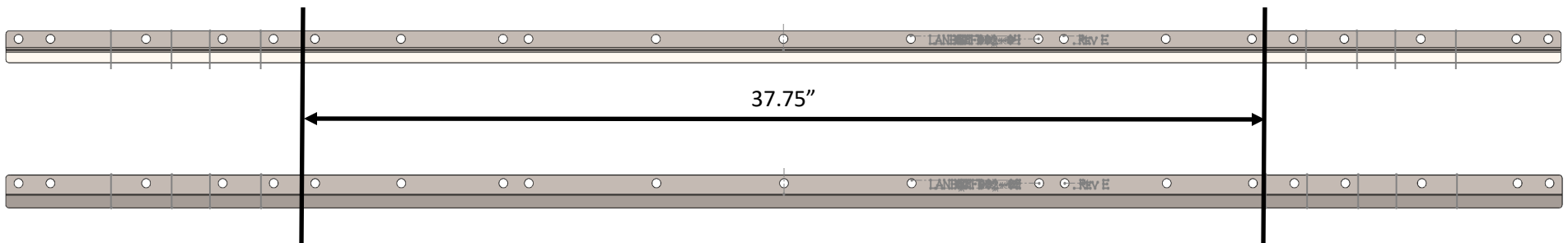
				
LANBSHD001 (2)	LANBSHD002 (1)	LANBS6FD3775 (2)	LANBS6FD02-03 (2)	LANBS6FD02-04 (2)
				
LANBSFLX08A (2)	LANBSFLX08B (2)	LANF0DNU (12)	LANMCHN40 (12)	LANFH1H2M (12)
				
LANFHN0MJ (12)	LANNAS2 (8)	LANFXG26 (28)	REDKRJ8 (28)	

Kit Installation

Refer to Figures 1

1. Take the Brush holders (LANBS6FD02-03 & LANBS6FD02-04) and cut each along the inside etched lines. The finished length should be 37.75" long (Centered from side to side).

Figure 1



Kit Installation

Refer to Figures 2—4

2. Loosely assemble JD HD Brush Mounting Bracket's (LANBSHD001), JD HD Center Support Bracket (LANBSHD002) & Brush Holder's (LANBS6FD02-03 & LANBS6FD02-04) together with provided 5/16 x 3/4" carriage bolts (LANFXG26) and 5/16" Top Lock nuts (REDKRJ8).
3. Slide Bean Saver Brush's (LANBS6FD3775) between Brush Holders centered and flush with outside of JD HD Brush Mounting Brackets.
4. After loosely assembled, measure outside dimensions of JD HD Brush Mounting Brackets (LANBSHD001) making sure your measurement is 75.5" long.
5. Once Bean Saver Brushes are slide into place, make sure the top of brush is flush with formed Brush Holder (LANBS6FD02-04).
8. Install Neodymium Cup Magnets (LANMCHN40) using Flat Head Screw (LANFH1H2M), Rubber Washer (LANFHN0MJ) & 10-24 NYLOC nuts (LANFODNU).
9. Tighten hardware.

Figure 2

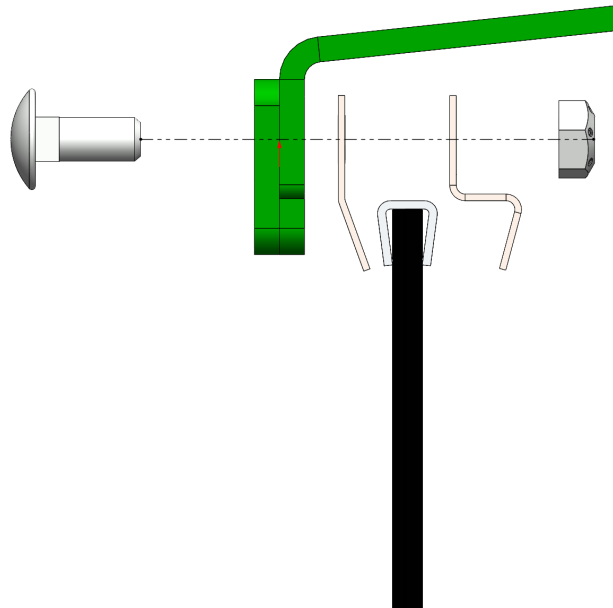


Figure 3

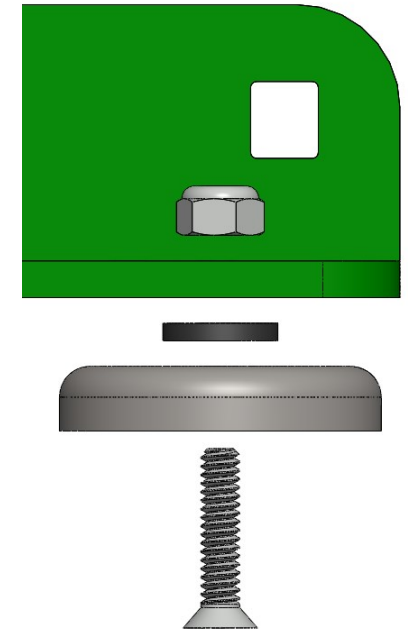


Figure 4



Kit Installation

Refer to Figures 5—7

10. Take Brush Kit Beam Clamps (LANBSFLX08A & LANBSFLX08B) and install Neodymium Cup Magnet (LANMCHN40) using Flat Head Screw (LANFH1H2M), Rubber Washer (LANFHN0MJ) & 10-24 NYLOC nut (LANF0DNU).
11. Install Brush Kit Beam Clamps (LANBSFLX08A & LANBSFLX08B) to JD HD Brush Mounting Bracket (LANBSHD001) using 5/16" x 3/4" Carriage bolts (LANFXG26) and 5/16" Serrated Flange nuts (LANNAS2).

Note: The Clamps go on the inner side of the mounting brackets with the flanges facing inward so the magnets are all aligned.

12. Ensure that the mounts and hardware are centered in the slot and tighten hardware.

Figure 6

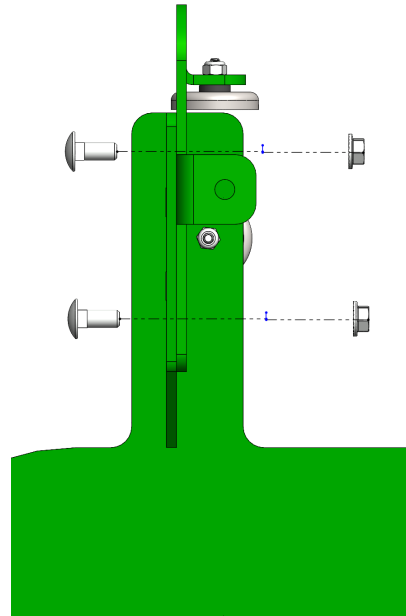


Figure 7

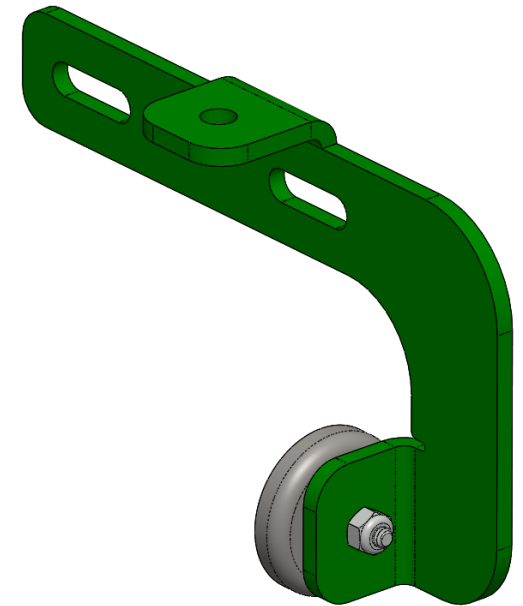
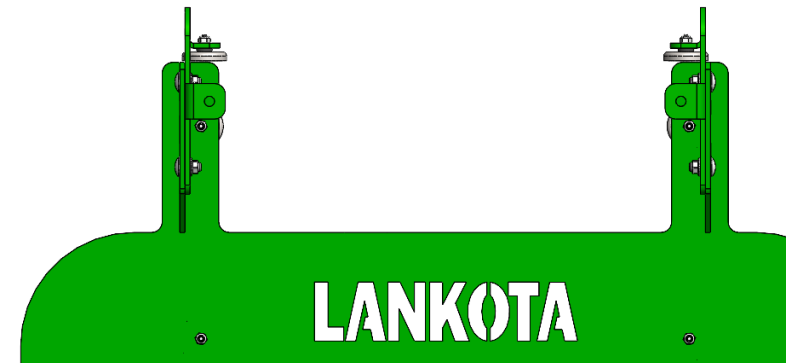


Figure 5



Kit Installation

Refer to Figures 8 & 9

13. Once all hardware and magnets are installed, center JD HD Bean Saver Mounts and set the Beam Clamps (LANBSLFX08A & LANBSFLX08B) on back lip of header. While keeping hands and fingers clear, set mount onto flat on header above feeder house.
14. Ensure that all magnets are sitting flat onto header.

Note: If Bean Saver magnets are not sitting flat, loosen hardware holding Beam Clamps and adjust making sure full contact is had by all 12 magnets.

Figure 8



Figure 9





**For further technical assistance,
Call Lankota Inc. at:
1-866-526-5682**