

LANBSJDX9

Installation Instructions

Lankota Upper Feeder House Brush Kit for JD® X9 Series Combines

LANKOTA®

**270 West Park Avenue
Huron, SD 57350
866-526-5682**

Numerical Parts List

Part Numbers	Description	Qty
LANBS6FD01	Brush	1
LANBS6FD02-03	Brush Holder - (Long) Bottom	1
LANBS6FD02-04	Brush Holder - (Long) Top	1
LANBSJDX901	John Deere X9 Brush Shield	1
LANBSBH	Bag of Hardware	1
LANFXG26	5/16-18 x 3/4" Carriage Bolt	7
REDKRJ8	5/16-18 Top Lock Nut	7

Preparation

1. Remove head from combine if one is attached.
2. Raise the feeder house and lower the safety stop on the feeder house cylinder.
3. Set the parking brake on the combine.
4. Turn off the combine engine and remove the key.

Pictorial Parts List

 <p>LANBS6FD01 (1)</p>	 <p>LANBS6FD02-03 (1)</p>	 <p>LANBS6FD02-04 (1)</p>
 <p>LANSBJDX901 (1)</p>	 <p>LANFXG26 (7)</p>	 <p>REDKRJ8 (7)</p>

Kit Installation

Refer to Figures 1-3

1. Take the brush holders (LANBS6FD02-03 & LANBS6FD02-04), and cut 1.25" off each end. The resulting lengths should be 58.5" long (centered from side to side).
2. Cut 2.5" off the end of the brush to make it the same length as the holders. Smash the end closed with a hammer.

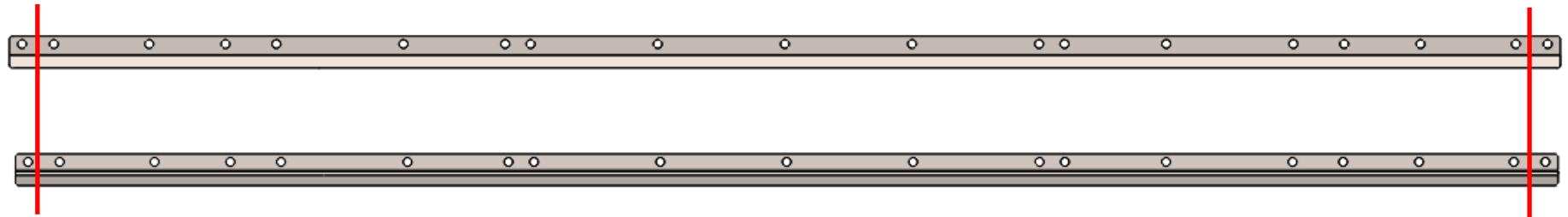


Figure 1



Figure 2



Figure 3

Kit Installation

Refer to Figures 4 & 5

3. Install the brushes on bracket LANBSJDX901 as shown below; use the provided 5/16" carriage bolts and top lock nuts found in the LANBSBH bags and tighten.



Figure 4

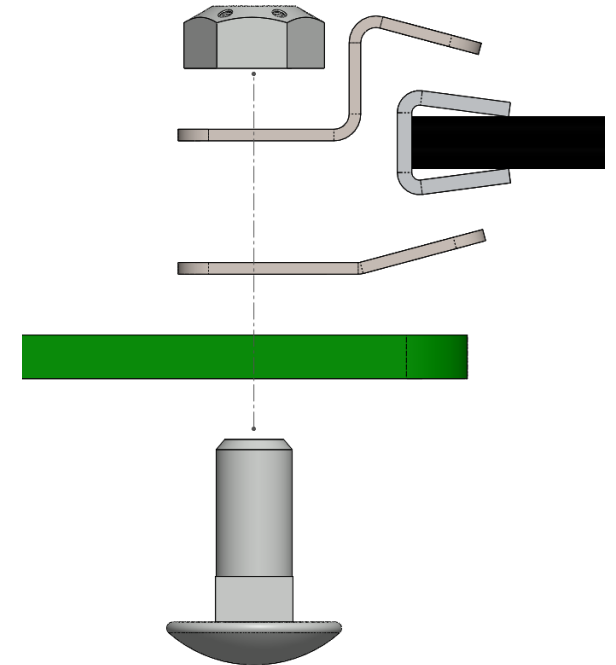


Figure 5

Kit Installation

Refer to Figures 6 & 7

4. Remove the top four bolts holding the upper feeder house shield and the ones on each end into the side shields.
5. Loosen, but do not remove, the bolts holding the side shields on (4 on each side). Remove the factory top shield.

Figure 6



Figure 7



Kit Installation

Refer to Figure 8

6. Position the previously assembled brush/bracket into the top of the feeder house opening.
7. Slide the brush up until the holes in the bracket line up with the threaded holes in the feeder house.
8. Replace all the bolts for the feeder house shields.
9. Tighten all hardware.



Figure 8

For further technical assistance,

Call Lankota Inc. at:

1-866-526-5682