

LANED97986

Installation Instructions

Static Electricity Dissipator for JD RD-Series Headers

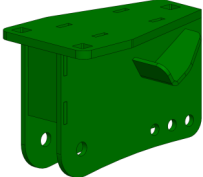
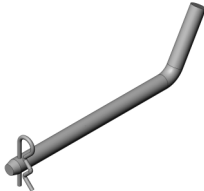
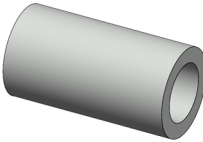
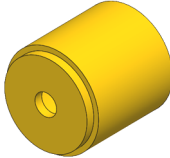




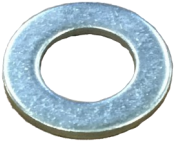
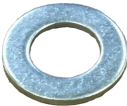




LANKOTA[®]

**270 West Park Avenue
Huron, SD 57350
866-526-5682**

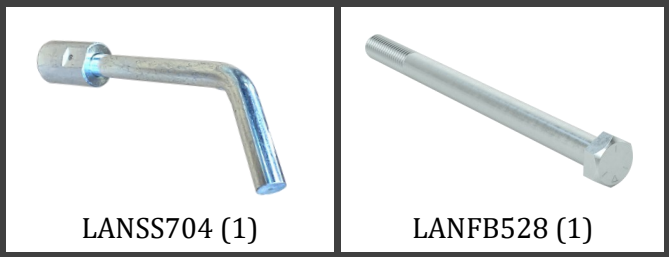
Numerical Parts List

Part Numbers	Description	Qty
LANED322A	Static Dissipator Arm—18.5" Long	1
LANED322B	Dissipator Spring Mount	1
LANED979A	RD Static Dissipator Mount	2
LANED979B	RD Static Dissipator Pivot Weldment	1
LANED979C	Bent Clevis Pin—1/2" x 6"	1
LANED275	Grounding Spacer	1
LANED276	Grounding Plate, Disc-to-Bolt	1
LANED277	Pivot Bushing	1
LANSS651P	Spring Hub Pipe	2
LANSS651G	Torsion Spring	1
LANGD4121	Disc Opener, 15" OD	1
LAN8476A612	Spring Plunger, Stainless	1
LAN82340	Synthetic Grease w/ PTFE, Dielectric, 1cc	3
LANSS654	5/8" x 4" Hex Bolt	1
REDB710	5/8" x 2.5" Hex Bolt	1
LANFWS57	5/8" SAE Flat Washer	8
REDKRJF	5/8" Top Lock Nut	5
LANFWS55	1/2" SAE Flat Washer	6
LAN506K	1/2" x 1.5" Carriage Bolt	4
RED1F30	1/2" Top Lock Nut	5
RED706K	5/8" x 1.5" Carriage Bolt	3
REDWL53	3/8" Lock Washer	1
LAN204K	5/16" x 1" Carriage Bolt	4
REDKRJ8	5/16" Top Lock Nut	4
REDNAF3	3/8" Hex Nut	1
LANSS704	Twist Lock Pin, 1/2"	1
LANFB528	1/2" x 7" Hex Head Bolt	1

Pictorial Parts List

				
LANED322A (1)	LANED322B (1)	LANED979A (2)	LANED979B (1)	LANED979C (1)
				
LANED275 (1)	LANED276 (1)	LANED277 (1)	LANSS651P (2)	LANSS651G (1)
				
LANGD4121 (1)	LAN8476A612 (1)	LAN82340 (3)	LANSS654 (1)	REDB710 (1)
				
LANFWS57 (2)	REDKRJF (5)	LANFWS55 (6)	LAN506K (4)	RED1F30 (5)
				
RED706K (3)	REDWL53 (1)	LAN204K (4)	REDKRJ8 (4)	REDNAF3 (1)

Pictorial Parts List



Kit Installation

Refer to Figures 1 & 2

1. Attach the RD Static Dissipator Mounts (LANED979A) to the outside of the shipping bracket of the header using the provided 1/2" x 1.5" Carriage Bolts (LAN506K), 1/2" SAE Washers (LANFWS55), and 1/2" Top Lock Nuts (RED1F30). Make sure the welded in bushings are toward the top.
2. Attach the RD Static Dissipator Pivot Weldment (LANED979B) to the Mounts using the provided 1/2" x 7" Hex Head Bolt (LANFB528), 1/2" SAE Washers (LANFWS55), and 1/2" Top Lock Nut (RED1F30). Tighten the nut only enough to remove the slop in the bolt and still allow the Pivot Weldment to move freely. Pin the Pivot Weldment in place using the provided 1/2" x 6" Bent Clevis Pin (LANED979C).

Figure 1

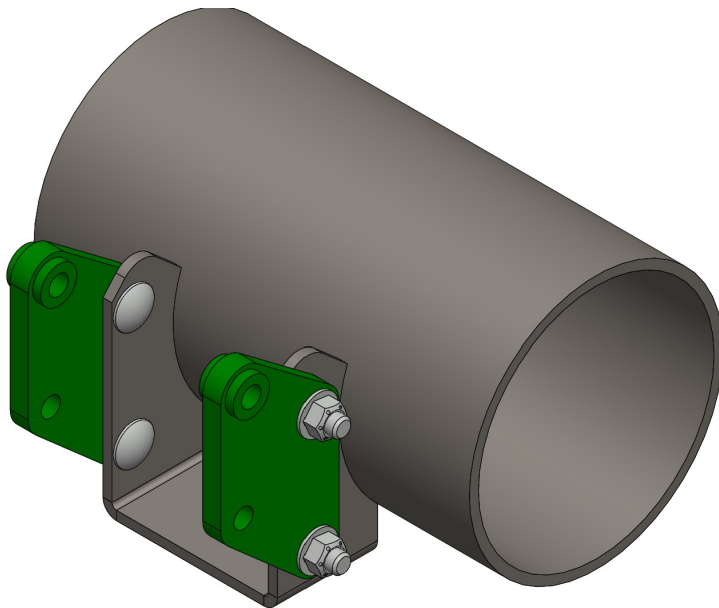
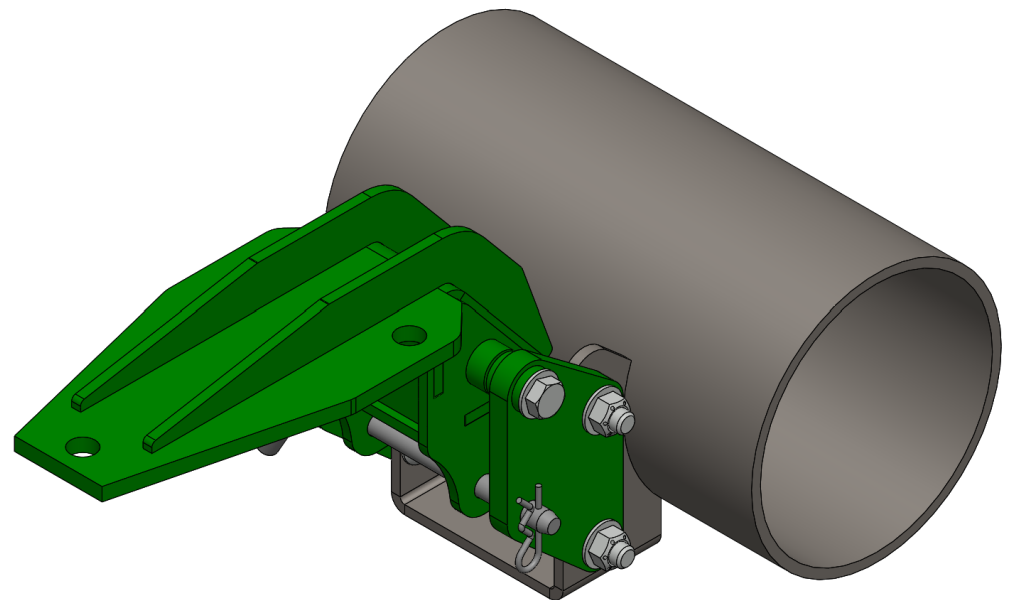


Figure 2

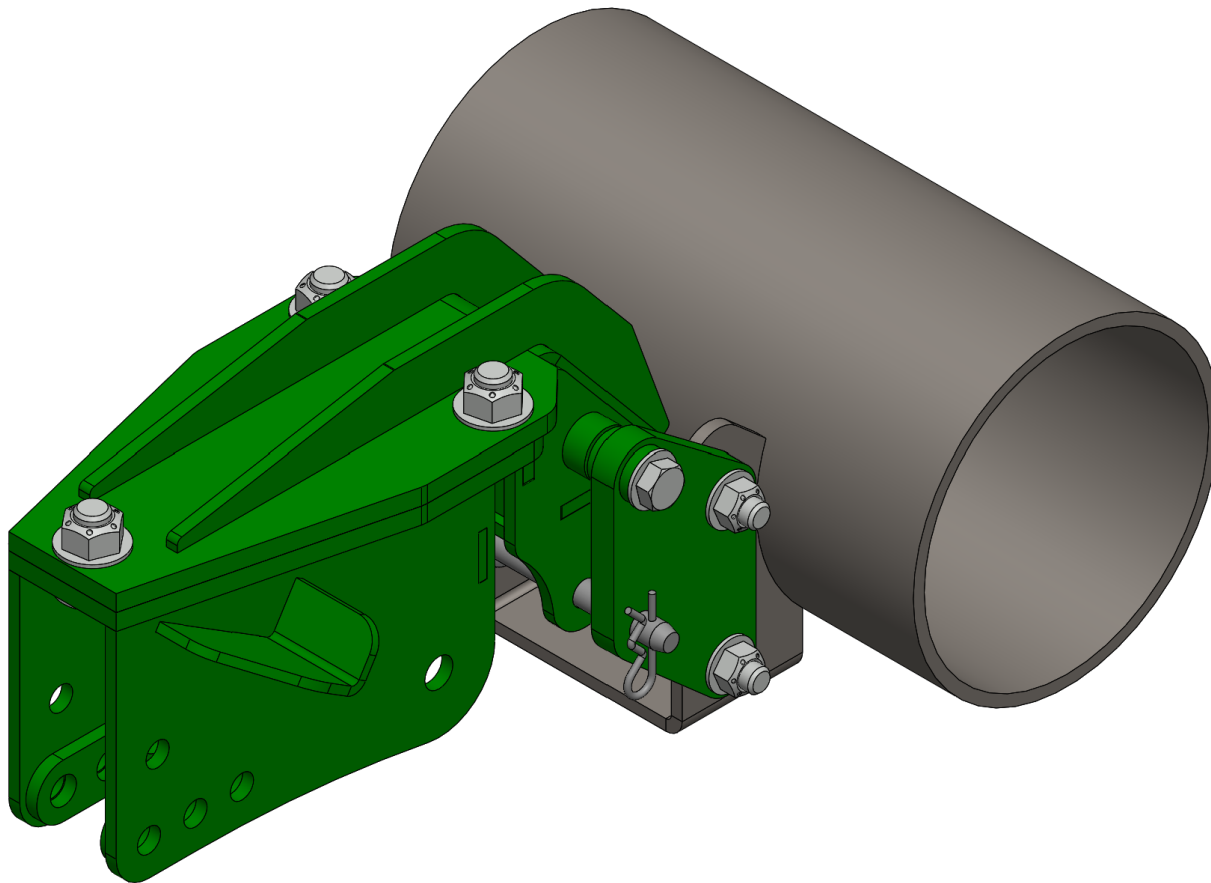


Kit Installation

Refer to Figure 3

3. Attach the HD Header Static Dissipator Spring Mount (LANED322B) to the Pivot Weldment using the provided 1/2" x 1-1/2" Carriage Bolts (LAN506K), 1/2" SAE Washers (LANFWS55), and 1/2" Top Lock Nuts (RED1F30).

Figure 3



Kit Installation

Refer to Figures 4 & 5

4. Apply anti-seize or grease to the inner surface of the arm (LANED322A) and then slide the pivot bushing (LANED277) inside.

Figure 4



Figure 5



Kit Installation

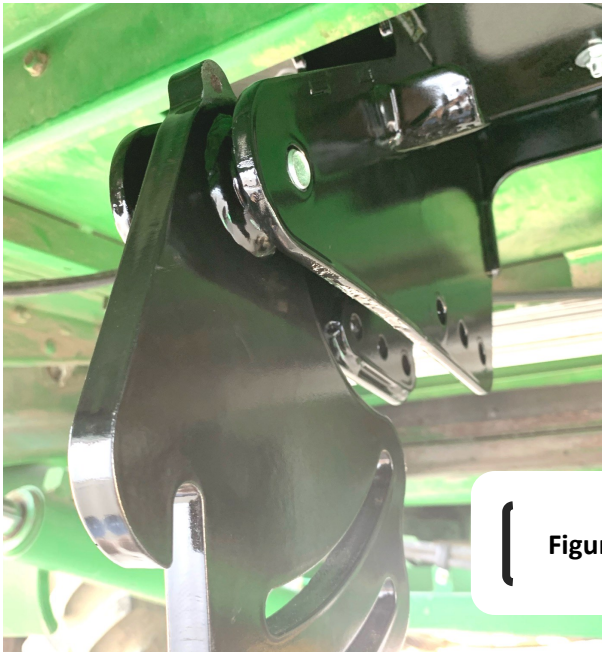


Figure 6

Refer to Figures 6-9

5. Hang the arm and bushing from the mount. Use the 5/8" x 2.5" bolt as a temporary pin. The "hook" goes forward/down.
6. Hold the spring up with the legs around the main mount and the center bend in the arm's hook as shown.
7. Set a spring hub (LANSS651P) inside a spring coil. Press the 5/8" x 4" bolt (LAN3726000), with a washer (LANFWS57), through the mount and arm bushing (push the shorter bolt out as you do so).
8. Put the second spring hub in the other side and fasten it all with another washer and a 5/8" top lock nut (REDKRJF). Tighten well. Check that the arm swings smoothly.



Figure 8



Figure 7

Figure 9



Kit Installation



Figure 10

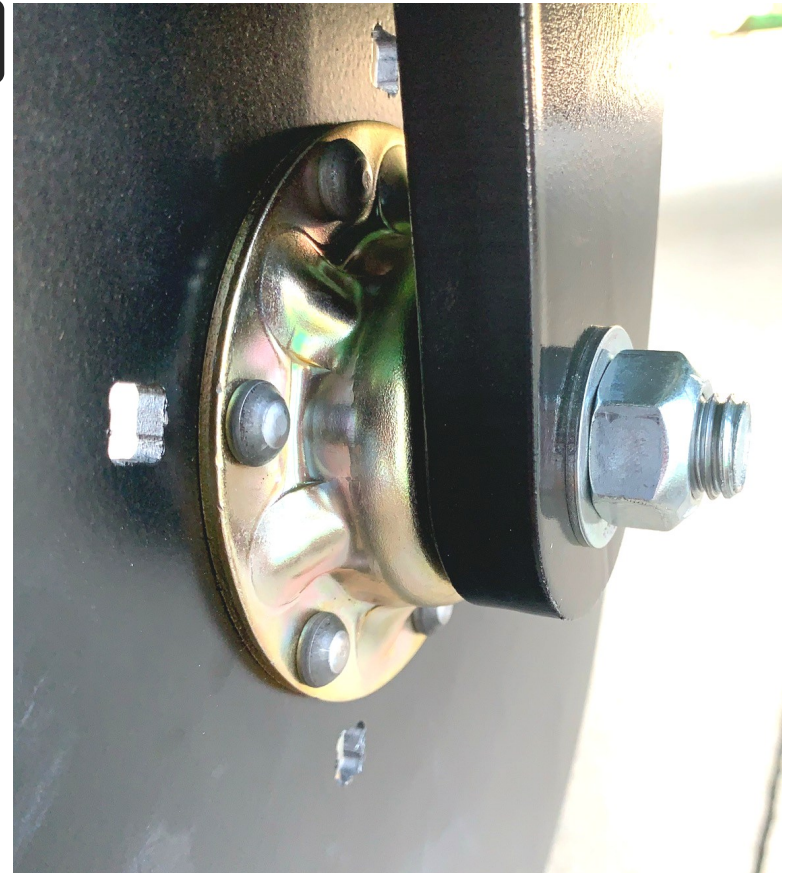
Figure 11



Figure 12



Figure 13



Refer to Figures 10–13

9. Clean any paint or debris from the hole at the end of the arm. A good electrical connection is needed here.
10. Open a pouch of the provided dielectric grease and apply some to the cleaned hole.
11. Slide the 5/8" x 2.5" hex bolt (REDB710) through the disc's bearing (LANGD4121).
12. Put two 5/8" washers (LANFWS57) on the bolt and then push the bolt through the grease and arm.
13. Install another washer and fasten with a 5/8" top lock nut (REDKRJF). Tighten well.

Kit Installation



Figure 14

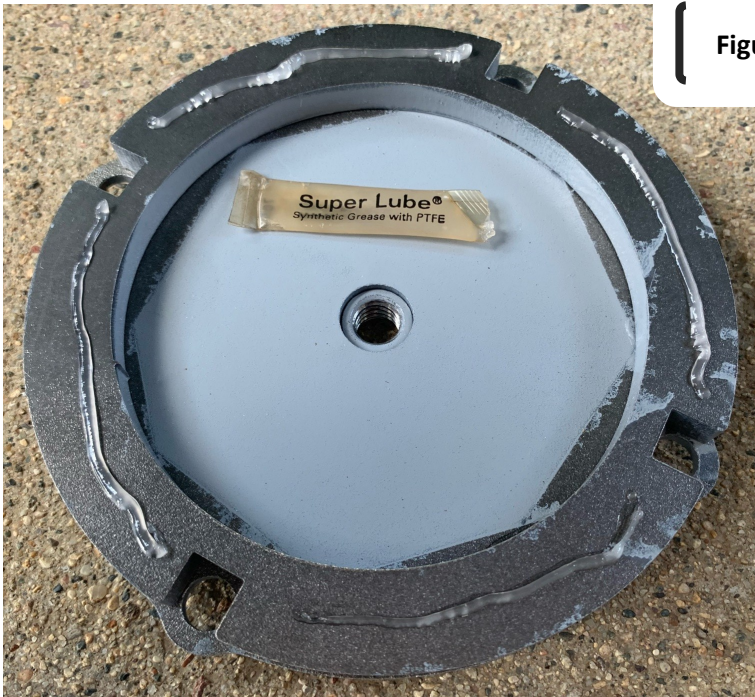


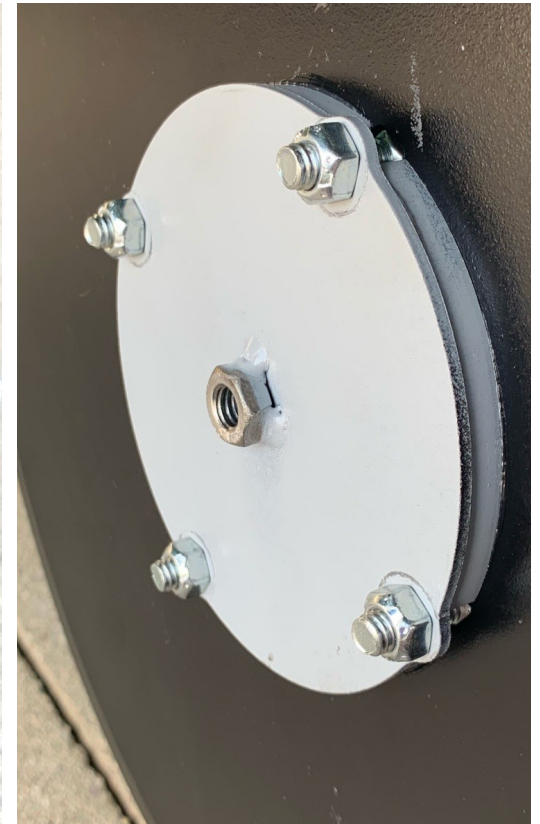
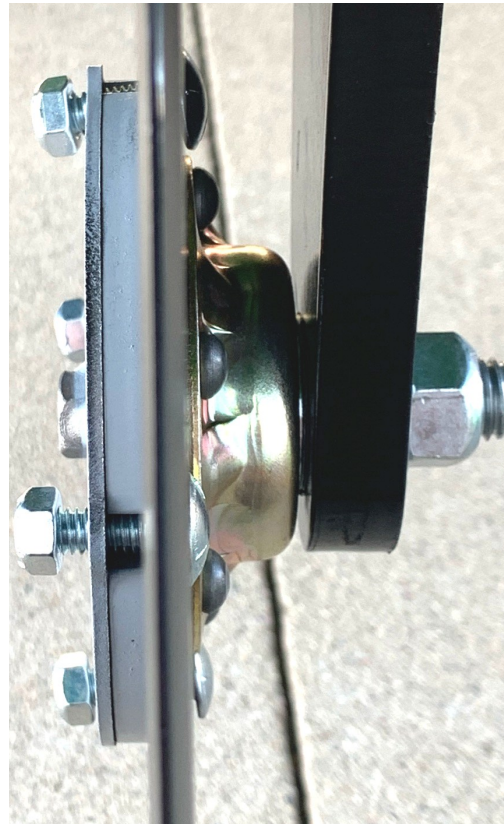
Figure 15

Refer to Figures 14—17

14. Apply some dielectric grease to the center of the head of the 5/8" bolt.
15. Apply a bead of dielectric grease to one side of the spacer (LANED275).
16. Flip it over and set it on the grounding plate (LANED276) as shown.
17. Apply another bead of dielectric grease to the side of the spacer.
18. Attach the spacer and plate to the disc with four 5/16" x 1" carriage bolts (LAN204K) and top lock nuts (REDKRJ8). Tighten evenly.

Figure 16

Figure 17



Kit Installation

Refer to Figures 18—20

19. Screw the 3/8" nut (REDNAF3) onto the spring plunger (LAN8476A612) and slide the 3/8" lock washer (REDWL53) on as well.
20. Thread the plunger into the weld nut of the grounding plate until you feel the plunger tip contact the 5/8" bolt.
21. Using a hex key, compress the plunger 1-1.5 turns. Hold the key and disc stationary and tighten the hex nut and lock washer.



Figure 18



Figure 19

Figure 20



Kit Installation

Refer to Figures 21

22. The arm and spring mount have two slotted positions for use depending on the height/depth required as well as a storage hole position toward the back.
23. Use the 1/2" twist-lock pin and bent clevis pin to set the arm in the best position.



Figure 21

For further technical assistance,

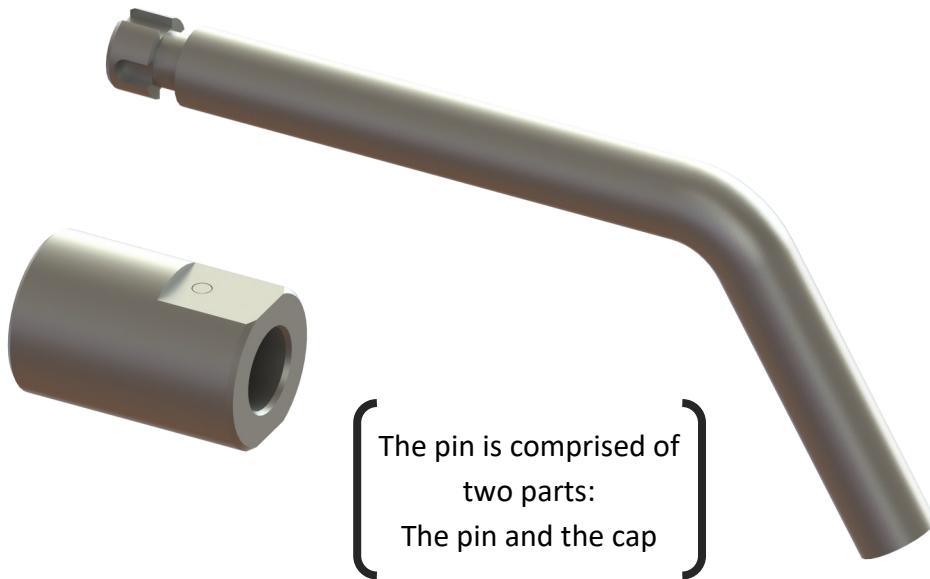
Call Lankota Inc. at:

1-866-526-5682

LANKOTA[®]

LANSS704 Instructions

Lankota 1/2" Twist-Lock Pin

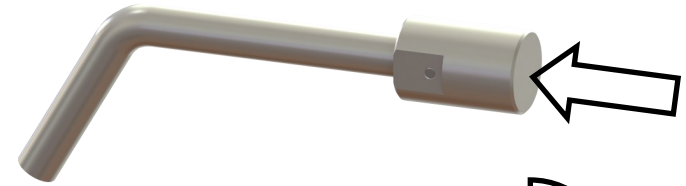


The LANSS704 is a patent pending pin designed by Lankota Inc. for the harsh environment of the field. The simple push, twist and release design ensures that the cap and pin cannot be separated by vibration or debris.

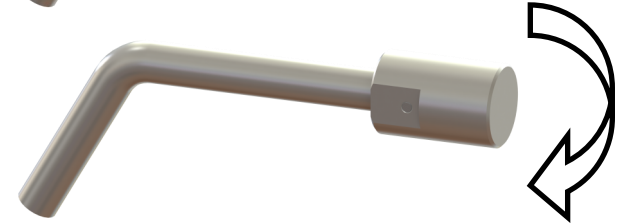
For any questions, please contact Lankota.

Removing LANSS704

Step 1: Push the cap in and hold.



Step 2: Twist cap 90° left or right.

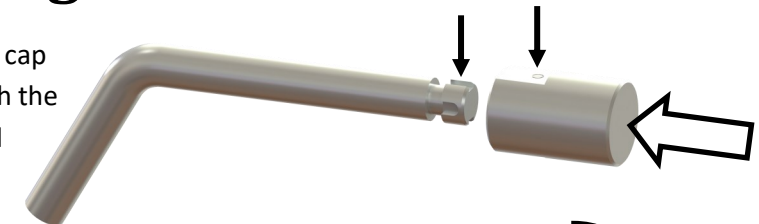


Step 3: Slide the cap off the pin.

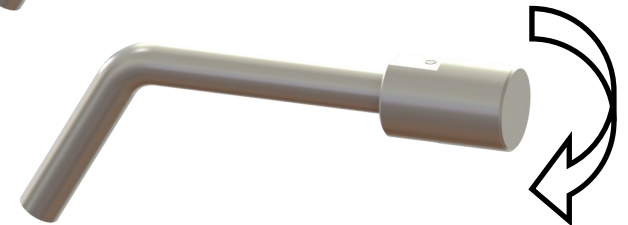


Installing LANSS704

Step 1: Align the cap retaining pin with the open groove and push on.



Step 2: Twist cap 90° left or right.



Step 3: Release the cap and ensure it is secure.

