

# **LANED99772**

## **Installation Instructions**

**Static Electricity Dissipater for CIH XX50, XX60 Series Combines**

# **LANKOTA®**

**270 West Park Avenue  
Huron, SD 57350  
866-526-5682**



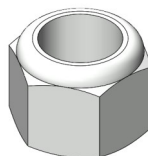

# Numerical Parts List

Part Numbers	Description	Qty
LANED271	Static Dissipater Arm—28" Long	1
LANED275	Grounding Spacer	1
LANED276	Grounding Plate, Disc-to-Bolt	1
LANED277	Pivot Bushing	1
LANED997A	CIH Static Dissipator Frame	1
LANED997B	CIH Static Dissipator Frame Extension	1
LANED905C	CIH Combine Dissipator Mount	1
LANSS651P	Spring Hub Pipe	2
LANSS561G	Torsion Spring	1
LANGD4121	Disc Opener, 15" OD	1
LAN8476A612	Spring Plunger, Stainless	1
LANSS704	Twist Lock Pin, 1/2"	1
LAN82340	Synthetic Grease w/ PTFE, Dielectric, 1cc	3
LAN3726000	5/8" x 4" Hex Bolt	1
REDB710	5/8" x 2.5" Hex Bolt	1
LANFWS57	5/8" SAE Flat Washer	5
REDKRJF	5/8" Top Lock Nut	2
REDKRJ8	5/16" Top Lock Nut	4
LAN204K	5/16" x 1" Carriage Bolt	4
REDWL53	3/8" Lock Washer	1
REDNAF3	3/8" Hex Nut	1
LANFWS55	1/2" SAE Flat Washer	8
LANFWS53	3/8" SAW Flat Washer	1
REDWL55	1/2" Lock Washer	4
LAN506K	1/2"-13 X 1-1/2" Carriage Bolt	8
LAN18A32	3/8"-16 X 1-1/2" Carriage Bolt	1
LANF3043T3	1/2" X 6.5" U Bolt	2
LAN1137030	1/2"-13 Nylon Lock Nut	8
LAN1618000	3/8"-16 Nylon Lock Nut	1

# Pictorial Parts List

				
LANED271 (1)	LANED997A (1)	LANED997B (1)	LANED905C (1)	LANSS704 (1)
				
LANED275 (1)	LANED276 (1)	LANED277 (1)	LANGD4121 (1)	LAN8476A612 (1)
				
LANSS651P (2)	LANSS651G (1)	REDB710 (1)	LANFWS57 (5)	REDKRJF (2)
				
LAN82340 (3)	LAN3726000 (1)	LAN204K (4)	REDWL53 (1)	REDKRJ8 (4)
				
REDNAF3 (1)	LANFWS55 (8)	LANFWS53 (1)	REDWL55 (4)	LAN506K (8)

# Pictorial Parts List

			
LAN18A32 (1)	LANF3043T3 (2)	LAN1137030 (8)	LAN1618000 (1)



# Kit Installation

## Refer to Figure 1

1. Loosely fasten the Dissipator Frame (LANED997A) to the Dissipator Frame Extension (LANED997B) using the provided 1/2"-13 x 1-1/2" Carriage bolts (LAN506K), 1/2" SAE Washers (LANFWS55), and 1/2"-13 Nylon Lock Nuts (LAN1137030). Be sure to have the nuts on the bottom side as pictured below.

Figure 1





# Kit Installation

## Refer to Figures 2

2. Remove 4 bolts under the feederhouse toward the front and 3 toward the rear of the feederhouse as indicated by the arrows. Retain for future use.

## Refer to Figures 3

3. Place the mount assembly up to the bottom of the feederhouse. Using the factory hardware, fasten one end to the front of the feederhouse and one end to the rear side of the feederhouse. Tighten all hardware.



Figure 2

Figure 3





# Kit Installation

## Refer to Figures 4

4. Attach the Combine Dissipator Mount (LANED905C) to the Dissipator Frame assembly using the provided 1/2"-13 x 1-1/2" Carriage Bolts (LAN506K), 1/2" SAE Flat Washers (LANFW555), and 1/2"-13 Nylon Lock Nuts (LAN1137030).

Figure 4



# Kit Installation

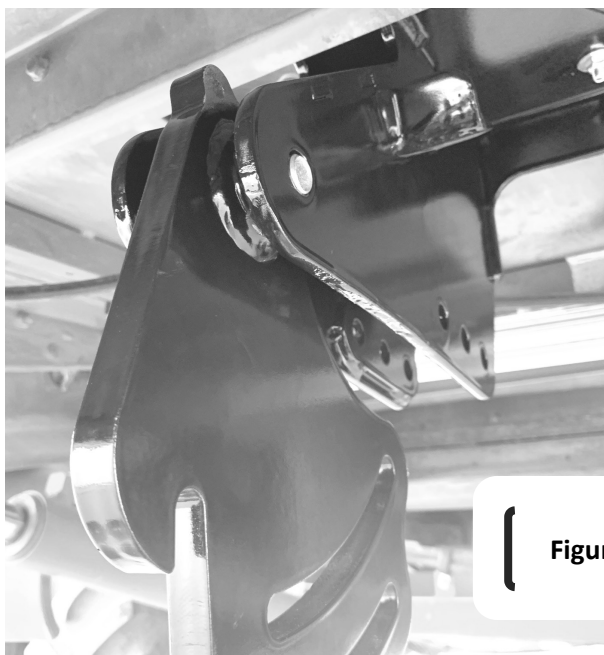


Figure 6



Figure 7



Figure 8



Figure 9

## Refer to Figures 6—9

5. Hang the arm and bushing from the mount. Use the 5/8" x 2.5" bolt as a temporary pin. The "hook" goes forward/down.
6. Hold the spring up with the legs around the main mount and the center bend in the arm's hook as shown.
7. Set a spring hub (LANSS651P) inside a spring coil. Press the 5/8" x 4" bolt (LAN3726000), with a washer (LANFWS57), through the mount and arm bushing (push the shorter bolt out as you do so).
8. Put the second spring hub in the other side and fasten it all with another washer and a 5/8" top lock nut (REDKRJF). Tighten well. Check that the arm swings smoothly.



# Kit Installation



Figure 10

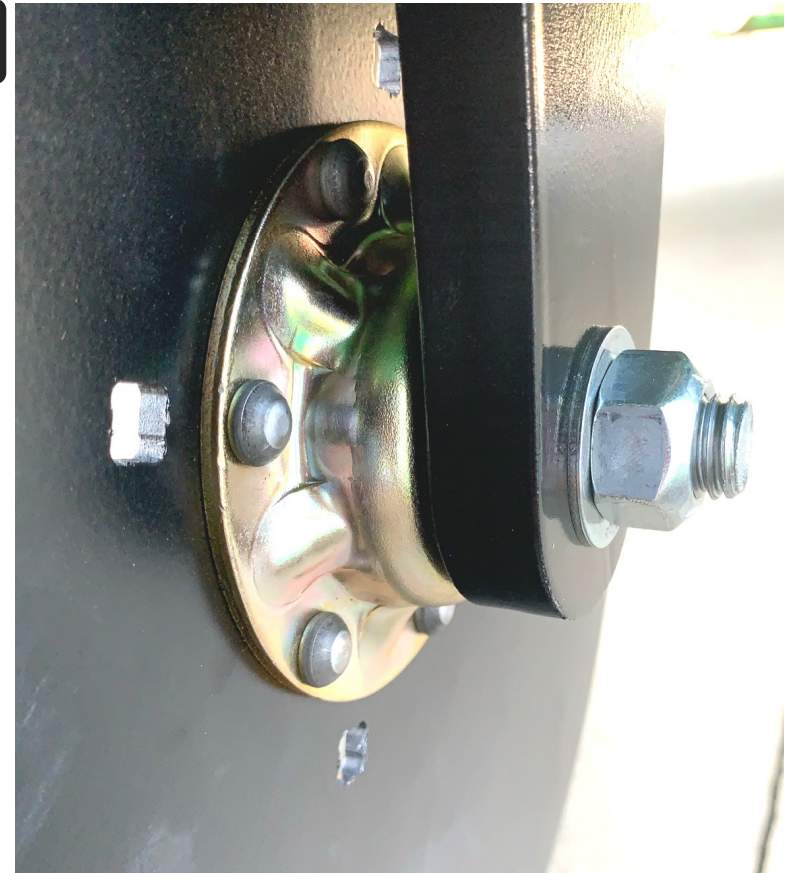
Figure 11



Figure 12



Figure 13



## Refer to Figures 10—13

9. Clean any paint or debris from the hole at the end of the arm. A good electrical connection is needed here.
10. Open a pouch of the provided dielectric grease and apply some to the cleaned hole.
11. Slide the 5/8" x 2.5" hex bolt (REDB710) through the disc's bearing (LANGD4121).
12. Put two 5/8" washers (LANFWS57) on the bolt and then push the bolt through the grease and arm.
13. Install another washer and fasten with a 5/8" top lock nut (REDKRJF). Tighten well.



# Kit Installation



Figure 14

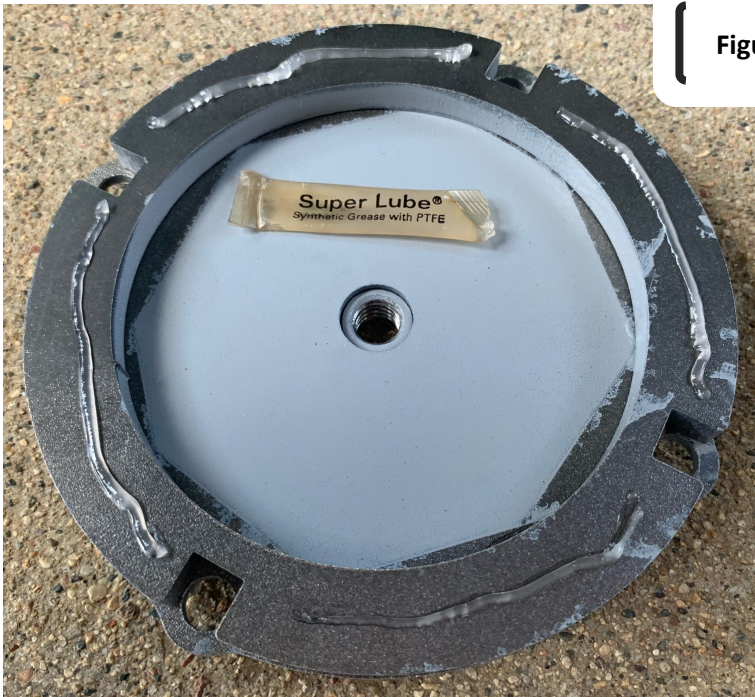


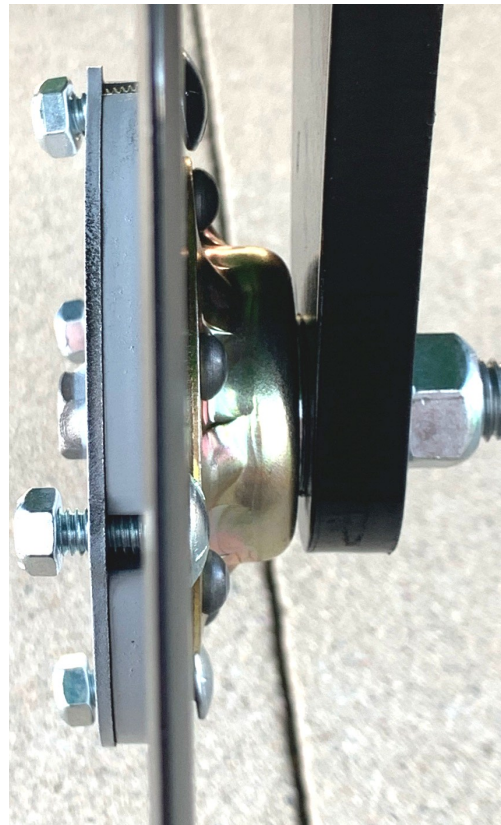
Figure 15

## Refer to Figures 14—17

14. Apply some dielectric grease to the center of the head of the 5/8" bolt.
15. Apply a bead of dielectric grease to one side of the spacer (LANED275).
16. Flip it over and set it on the grounding plate (LANED276) as shown.
17. Apply another bead of dielectric grease to the side of the spacer.
18. Attach the spacer and plate to the disc with four 5/16" x 1" carriage bolts (LAN204K) and top lock nuts (REDKRJ8). Tighten evenly.

Figure 16

Figure 17





# Kit Installation

## Refer to Figures 18—20

19. Screw the 3/8" nut (REDNAF3) onto the spring plunger (LAN8476A612) and slide the 3/8" lock washer (REDWL53) on as well.
20. Thread the plunger into the weld nut of the grounding plate until you feel the plunger tip contact the 5/8" bolt.
21. Using a hex key, compress the plunger 1-1.5 turns. Hold the key and disc stationary and tighten the hex nut and lock washer.



Figure 18



Figure 19

Figure 20



# Kit Installation

## Refer to Figures 21—23

22. The arm and mount have three positions for use.

- 1) Sunflower Mode: the front slot (Figure 21)
- 2) Soybeans & Corn Mode: the 2nd slot (Figure 22)
- 3) Storage/Travel: the holes furthest from the pivot (Figure 23)

23. Use the 1/2" twist-lock pin to set the arm in the best position.

Figure 23



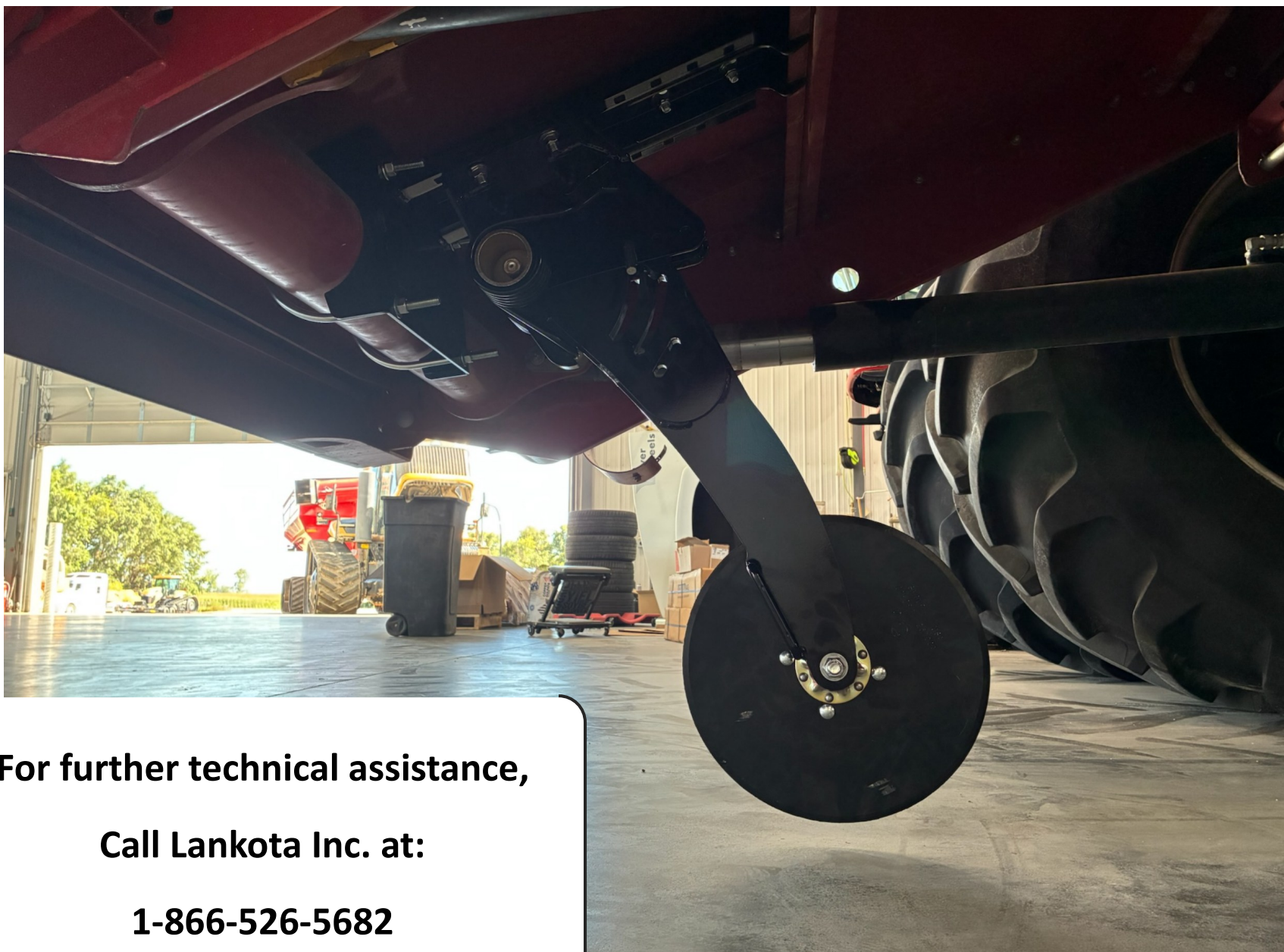
Figure 21



Figure 22





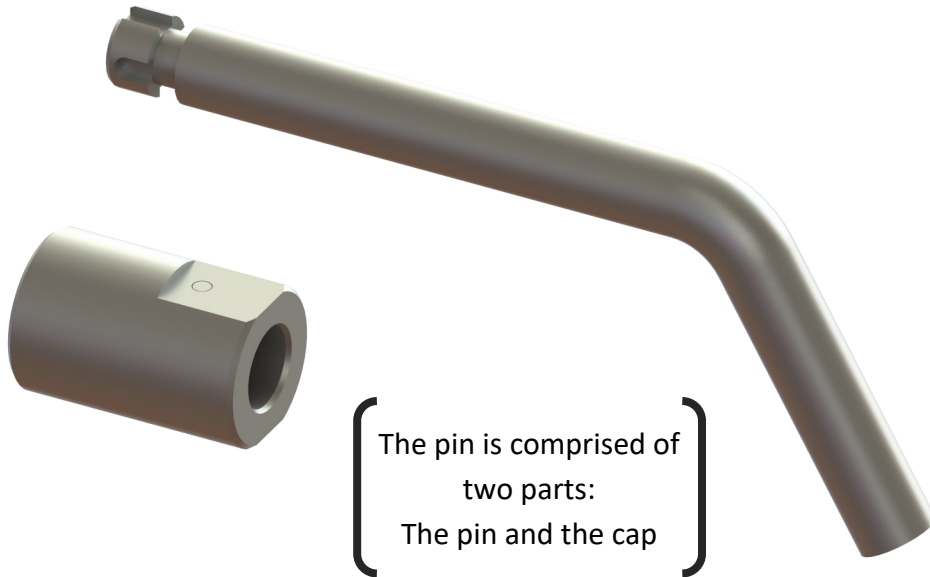


**For further technical assistance,  
Call Lankota Inc. at:  
1-866-526-5682**

# LANKOTA<sup>®</sup>

## LANSS704 Instructions

Lankota 1/2" Twist-Lock Pin

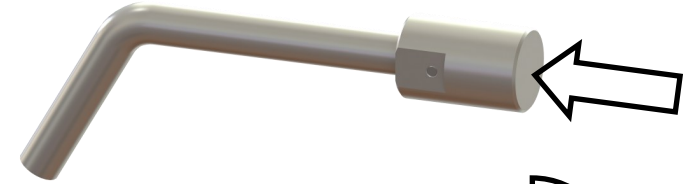


The LANSS704 is a patent pending pin designed by Lankota Inc. for the harsh environment of the field. The simple push, twist and release design ensures that the cap and pin cannot be separated by vibration or debris.

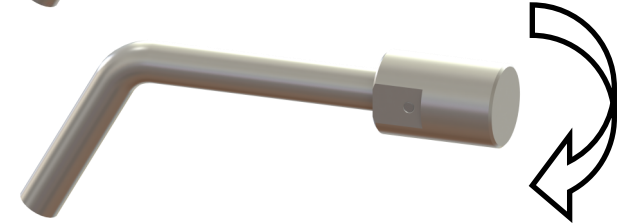
For any questions, please contact Lankota.

## Removing LANSS704

**Step 1:** Push the cap in and hold.



**Step 2:** Twist cap 90° left or right.

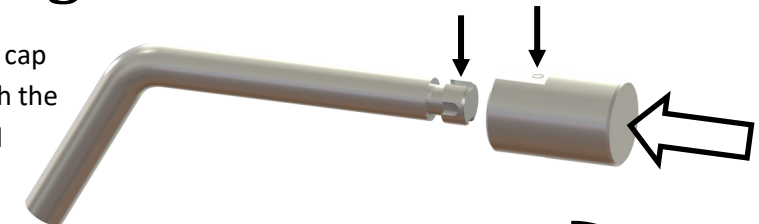


**Step 3:** Slide the cap off the pin.

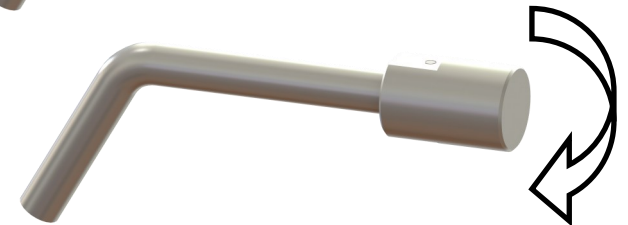


## Installing LANSS704

**Step 1:** Align the cap retaining pin with the open groove and push on.



**Step 2:** Twist cap 90° left or right.



**Step 3:** Release the cap and ensure it is secure.

