

LANGPS24540

Installation Instructions

Lankota GPS Adapter for JD 1770 & 1775 CCS Planters

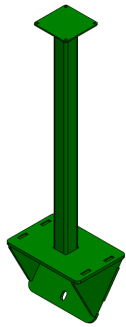
DOES NOT WORK WITH INDIVIDUAL ROW SEED BOX PLANTERS

LANKOTA®

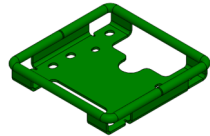
270 West Park Avenue
Huron, SD 57350
866-526-5682

Parts List

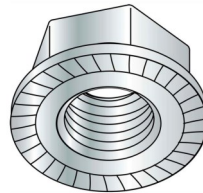
| Part Numbers | Description | Qty |
|--------------|------------------------------------|-----|
| LANCP031 | Planter GPS Mount | 1 |
| LANGPS8119 | Starfire Deluxe Shroud Mount | 1 |
| LAN14M7298 | M8-1.25 Metric Serrated Flange Nut | 8 |
| LAN9225K75 | M8x1.25mm Vibration Damping Mount | 4 |



LANCP031 (1)



LANGPS8119 (1)



LAN14M7298 (8)



LAN9225K75 (4)

Kit Installation

Refer to Figure 1

1. Remove the (3) factory bolts at the center of the planter at the end of the walking platform.
2. Install the LANCP031 on top of the frame tube using the factory hardware. Tighten the hardware.

Figure 1

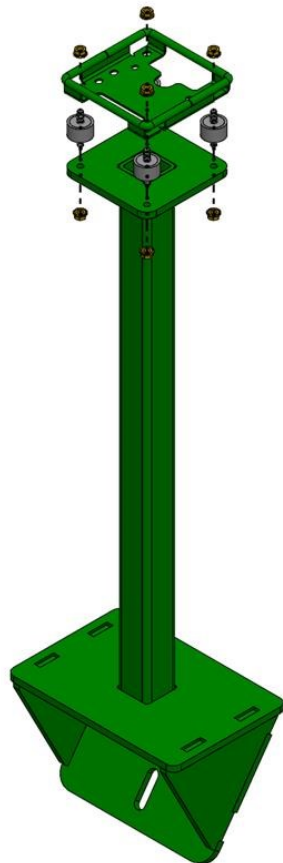


Kit Installation

Refer to Figure 2

3. Lastly, mount Starfire Deluxe Shroud Mount (LANGPS8119) on top of Planter GPS Upright Mount (LANGPS001). Use four (4) Vibration Dampening Mounts (LAN9225K75) and eight (8) M8 Serrated Flange Nuts (LAN14M7298). When all hardware is in place, tighten to secure mount. Do not over tighten.

Figure 2



For further technical assistance,

Call Lankota Inc. at:

1-866-526-5682