

LANMBJD888

Installation Instructions

Lankota CB Monitor Bracket for John Deere 7R, 8R, & 9R Tractors

LANKOTA®

270 West Park Avenue

Huron, SD 57350

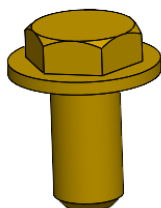
866-526-5682

Parts List

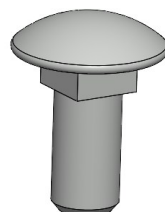
Part Numbers	Description	Qty
LANMBJD050	CB Bracket for 7R, 8R, & 9R JD Tractors	1
LAN19M7784	Flange Bolt—M10-1.5 X 20, Gr. 10.9	2
LANFXG26	Carriage Bolt .3125" - 18 X .75"	2
LANNAS2	Serrated Flange nut—.3125"-18, Gr.5	2



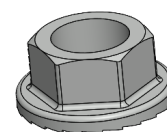
LANMBJD050 (1)



LAN19M7784 (2)



LANFXG26 (2)



LANNAS2 (2)

Kit Installation

Refer to Figures

1. There are 2 mounting locations. First, located on right rear cab post. Remove thread covers and install CB Monitor Bracket (LANMBJD050) using (2) M10 x 20 Flange bolt (LAN19M7784).
2. Second, slotted rail located on the top right side of roof. Install CB Monitor Bracket (LANMBJD050) using (2) carriage bolts (LANFXG26) and (2) serrated flange nuts (LANNAS2).

NOTE: Rail location only available with 7RXXX, 8RXXX, & 9RXXX Tractors.



For further technical assistance,

Call Lankota Inc. at:

1-866-526-5682