

LANMBJD999

Installation Instructions

Lankota CB Monitor Bracket for 70 Series and older John Deere Combines

LANKOTA®

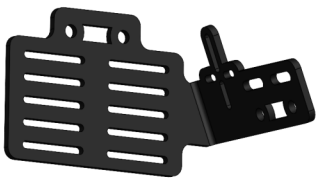
270 West Park Avenue

Huron, SD 57350

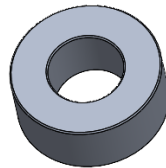
866-526-5682

Parts List

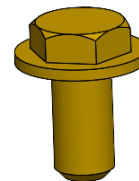
Part Numbers	Description	Qty
LANMBJD055	CB Bracket for 70 Series and older JD Combines	1
LANMBJD056	Aluminum Spacer	4
LANFE62P	Flange bolt—M6-1.0 X 25, Gr 8.8	2



LANMBJD050 (1)



LAN19M7784 (2)



LANFXG26 (2)

Kit Installation

Refer to Figures

1. Install CB Monitor Bracket (LANMBJD055) using (2) M6 Flange bolts (LANFE62P) to right rear cab post.
2. Provided are (4) aluminum spacers (LANMBJD056) to shim mount further away from cab post.
3. Once in desired location, tighten hardware.



For further technical assistance,

Call Lankota Inc. at:

1-866-526-5682