

LANRB19297

Installation Instructions

Winch Wireless Remote Kit

LANKOTA®

**270 West Park Avenue
Huron, SD 57350
866-526-5682**

Numerical Parts List

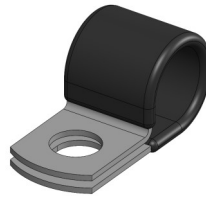
Part Numbers	Description	Qty
LANRB90288	Wireless Remote Kit (includes remote)	1
LAN8863T28	5/8" Loop Clamp	1
LAN31803	Heat Shrink Ring Terminal	1
LANRBSTICKER01	Sticker	1



LANRB90288 (1)



LAN8863T28 (1)



LAN31803 (1)



LANRBSTICKER01 (1)

Attention: Some wireless remote vendor hardware provided in the box will be used but is not listed above. Not all wireless remote vendor hardware will be used.

If remote is lost, a new fob (LANRB74520) can be purchased.

Kit Installation

Refer to Figures 1 & 2

1. Connect the green and black spade terminals to the mating green and black wires on the receiver harness.
Note: These will physically only go on the correct wires. The other black and green wire will not be used unless a replacement rocker switch is installed, which would connect to these wires.
2. Wrap the receiver harness wires into a neat coil, as shown in Figure 2, and zip tie the bundle of wires.
3. Crimp and heat the ring terminal (LAN31803) to the red wire in the receiver harness.

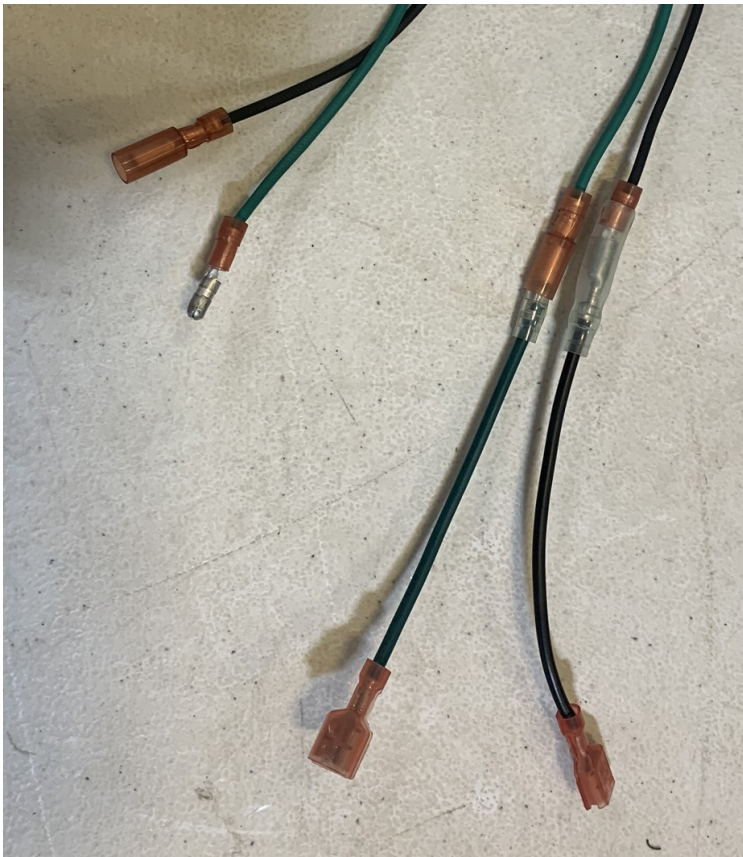


Figure 1

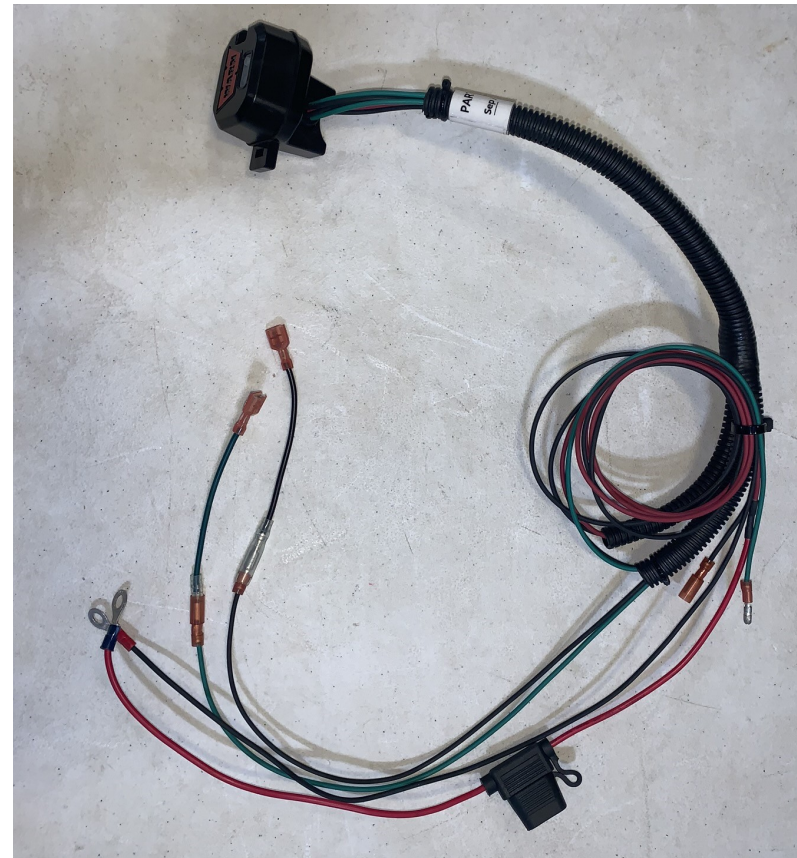


Figure 2

Kit Installation

Refer to Figures 3 & 4

4. On the left side of the winch mounting plate, install the loop clamp (LAN8863T28) under the rear winch mounting bolt.
5. Feed the receiver wiring harness in from the left side above the winch, behind the square tube and over toward the winch relay. See Figure 4.

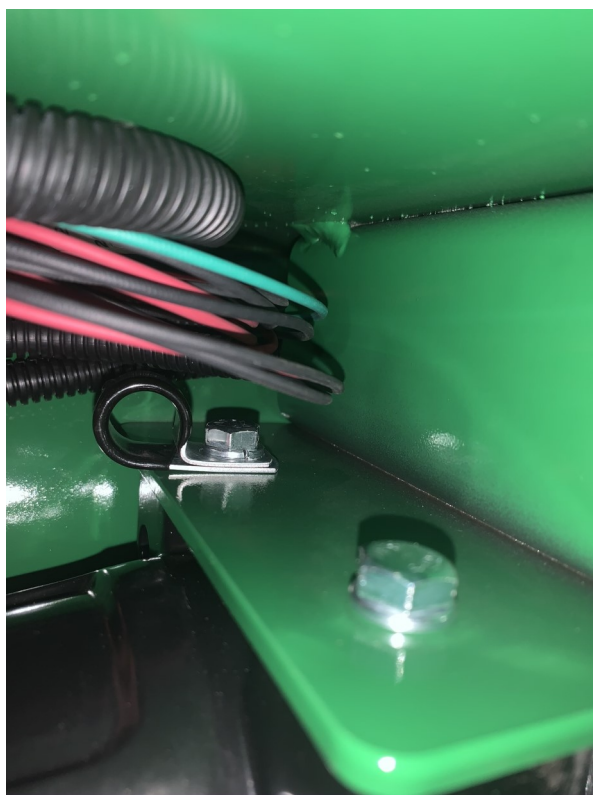


Figure 3

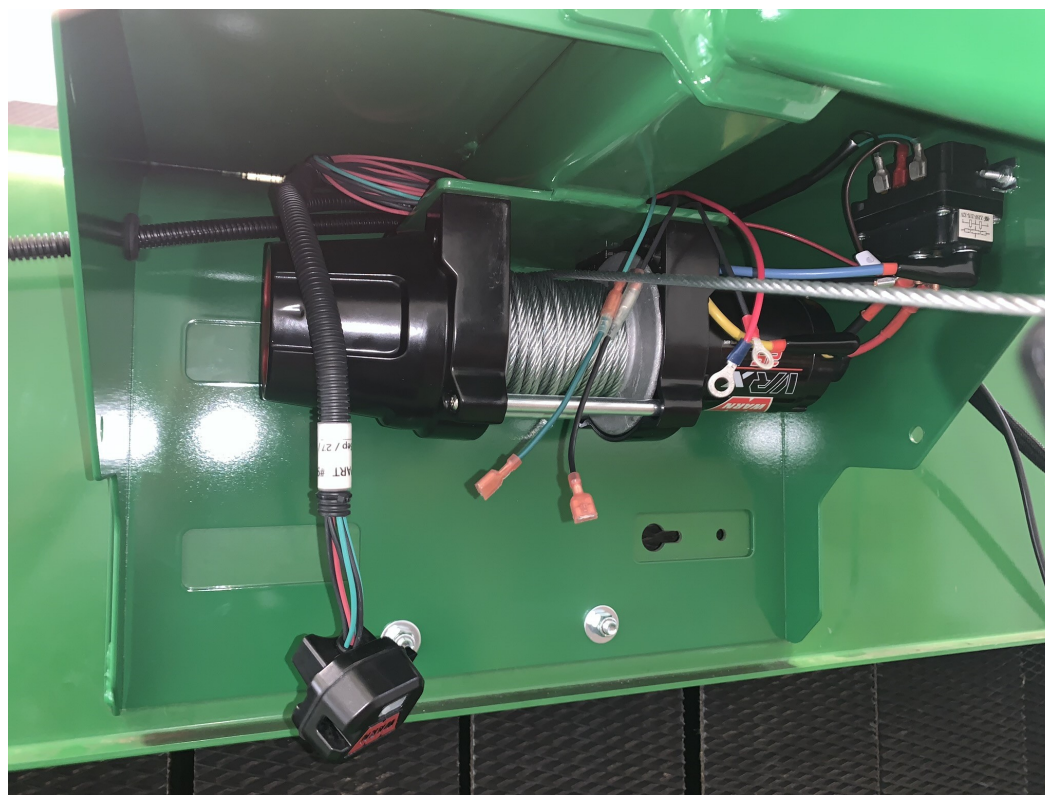


Figure 4

Kit Installation

Refer to Figures 5 & 6

6. Connect the wiring as shown in Figure 5.
 - Connect the green spade terminal on the outer relay spade with the green rocker switch wire.
 - Connect the black spade terminal on the inner relay spade with the black rocker switch wire.
 - Connect the red wire to the red relay post and the black wire to the black relay post.
 - Re-install protective rubber boots over relay posts.
7. Above the left side of the winch near the loop clamp, coil the receiver harness and zip tie the wiring bundle through the receiver box and to the loop clamp. Cut off the zip tie tail.



Figure 5



Figure 6

Kit Installation

Refer to Figures 7 & 8

8. Since the tethered rocker switch will not be used as the primary operator, coil the switch harness and zip tie it at the loop clamp. This way it does not need to be unwound from the lifting hook for every use.
9. Clean the lower half of the main winch enclosure and install the sticker (LANRBSTICKER01) between the two mounting bolts.



Figure 7



Figure 8

For further technical assistance,
Call Lankota Inc. at:
1-866-526-5682