

# **LANSS612R4F**

## **Installation Instructions**

**Lankota GENERATION II Stalk Stomper® Mounting Kit for JD® 612F Series Corn Heads**

**4-Row Coverage**

# **LANKOTA®**

**270 West Park Avenue**







**Huron, SD 57350**

**866-526-5682**

# Numerical Parts List

<b>Part Numbers</b>	<b>Description</b>	<b>Qty</b>
LANSS700I	Inside Mount Plate – Grade 50	2
LANSS700M	Standard 612 FC Series Mount – Grade 50	2
LANSSB42GRN	42" Stalk Stomper® Tool Bar	2
LANSS759	Straight Flip Up Mount – Grade 50	4
<b>LANSS612R6FBH</b>	<b>Box Containing Bags of Hardware</b>	<b>1</b>
LANFCJ9MC	1-3/8" Hole Saw	1
<b>LANSS600IBH</b>	<b>LANSS600I Bag of Hardware</b>	<b>2</b>
LAN600UBOLT	U-bolt 5/8" x 2.265" ID x 3.75" Length	2
LAN690830	5/8" Serrated Flange Nut	4
LAN506K	1/2"-13 x 1.5" Carriage Bolt	2
LAN3722	1/2"-13 Serrated Flange Nut	2
<b>LANSS600MBH</b>	<b>LANSS600M Bag of Hardware</b>	<b>2</b>
LAN600UBOLT	U-bolt 5/8" x 2.265" ID x 3.75" Length	2
LAN079UBOLT	U-bolt 5/8" x 5.125" ID x 6.5" Length	2
LAN619UBOLT	U-bolt 5/8" x 6.188" ID x 6.5" Length	2
LAN690830	5/8" Serrated Flange Nut	8
<b>LANSS668BH</b>	<b>LANSS668 Bag of Hardware</b>	<b>4</b>
LAN600UBOLT	U-bolt 5/8" x 2.265" ID x 3.75" Length	2
LAN690830	5/8" Serrated Flange Nut	4
LANFNHVK	1/2"-13 x 2.5" Flanged Cap Screw	1
LANFNXC1	1/2"-13 Flanged Nyloc Nut	1

# Pictorial Parts List

						
LANSS700I(2)	LANSS700M (2)	LANSSB42GRN (2)	LAN619UBOLT (4)	LAN079UBOLT (4)	LAN600UBOLT(16)	LANSS759 (4)
						
LAN690830(40)	LAN3722 (4)	LAN506K (4)	LANFNXC1 (6)	LANFNHVK (6)	LANFCJ9MC (1)	

# Preparation

1. Attach desired header to the combine. Lock the head to the combine.
2. Raise the head off the ground and lower the safety stop on the feeder house cylinder.
3. Set the parking brake on the combine.
4. Turn off the combine engine and remove the key.

# Installation

## Refer to Figure 1

1. Attach the brackets (LANSS700I) to the bottom of the header angle bracket on each side of the feeder house opening.

### Hardware:

LAN3722	1/2" Serrated Flange Nut
LAN506K	1/2" x 1.5" Carriage Bolt

Figure 1



Figure 2

**Refer to Figure 2**

- 2. Attach the brackets (LANSS700M) to the main header frame beam on the left and right hand side of the header within 30" of the SS600I bracket.**

**Drilling a hole(s) through sheet metal may be necessary.**

Hardware:

LAN690830	5/8" Serrated Flange Nut	
LAN079UBOLT	5" U-bolt	2011 & older heads
LAN619UBOLT	6" U-bolt	2012 & newer heads

**Refer to Figure 3**

- 3. Attach the tube (LANSSB42GRN) to the mounts.**

Hardware:

LAN690830	5/8" Serrated Flange Nut
LAN600UBOLT	2.5" U-bolt

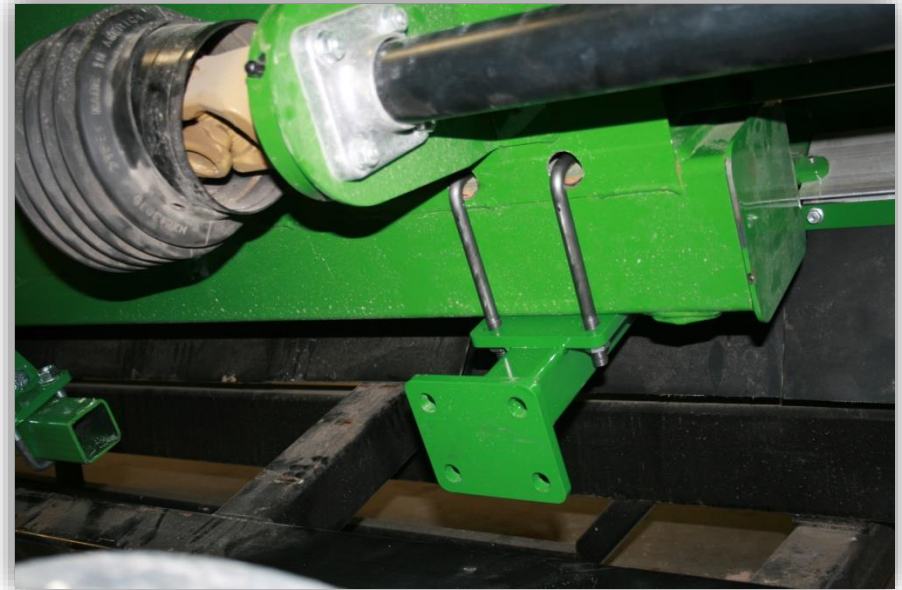
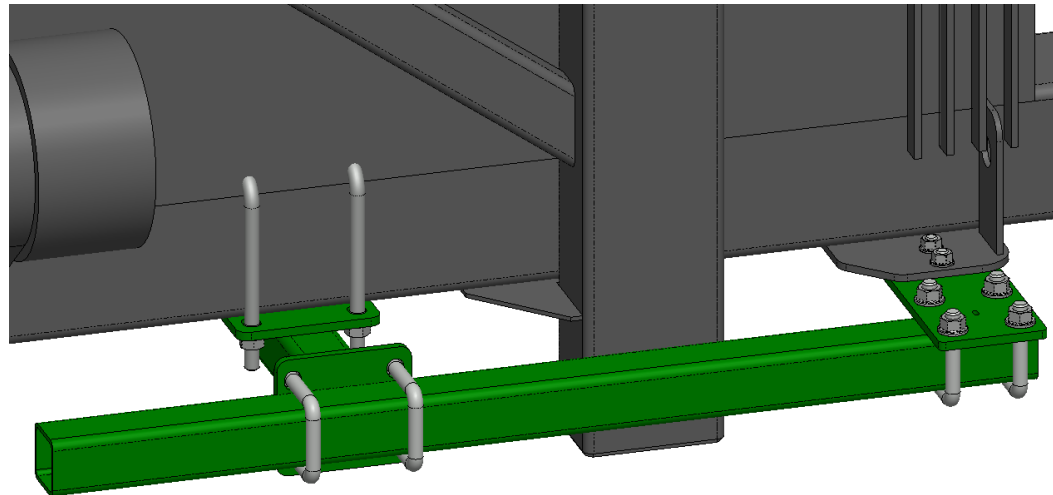


Figure 3



**Refer to Figures 3 & 4**

**4. Mount the flip up (LANSS759) Lankota Stalk Stomper® mounts to the tool bar so the mounts are centered in line with the row. Tighten all hardware.**

Hardware:

LAN690830	5/8" Serrated Flange Nut
LAN600UBOLT	2.5" U-bolt

**Note: The flip up brackets (LANSS759) are installed on the back of the tool bar only.**

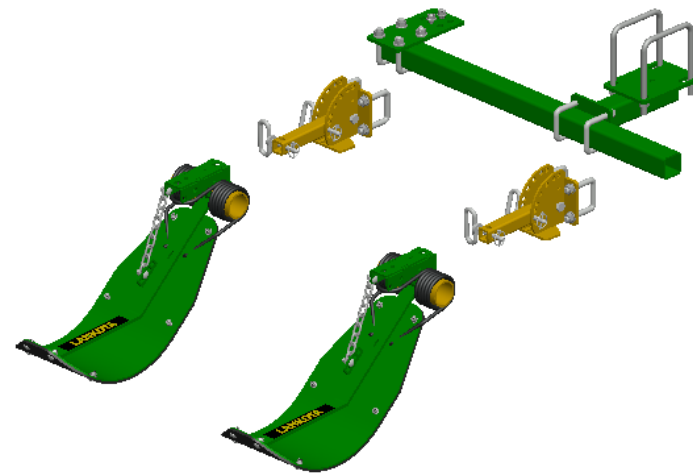
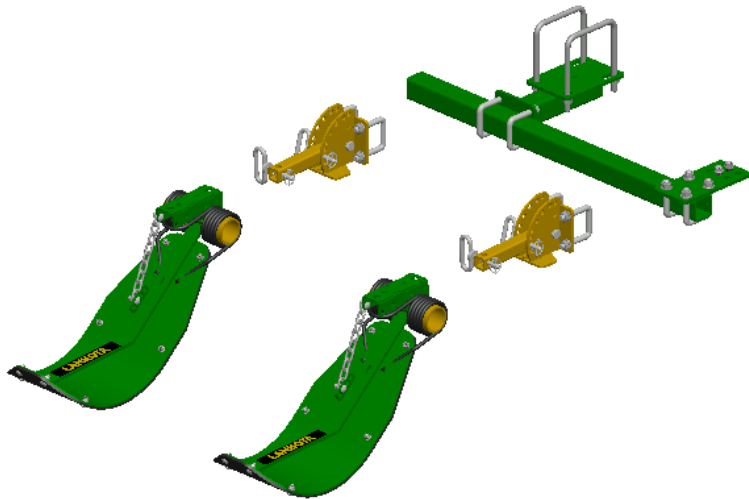
Figure 4



Figure 5

Refer to Figure 5

5. When using flip up mounts (LANSS759), bolt the Stalk Stomper® shoe (LANSS755) to the flip up mount (LANSS759) using 1 flanged bolt (LANFNHVK) and 1 nyloc nut (LANFNXC1) found in the bags of hardware marked (LANSS668BH). Tighten and secure. Use the flip up option of the flip up mounts (LANSS759) to clear tires on trailers.



# Stalk Stomper Disclaimer

## *Stalk Stomper Disclaimer*

Lankota Stalk Stomper shoes must be adjusted so that the stomper pad is at least 1.0" above ground level when the combine corn head is at its normal cutting height. Over compression of the spring can shorten the life of the spring, increase wear on the poly liner, and may result in undue damage NOT covered by Lankota's Limited Warranty.

**For further technical assistance**

**Call Lankota Inc. at:**

**1-866-526-5682**