

LANTC21381

Installation Instructions

Lankota Recovery System for Apache Sprayers

Fits Models: AS720, AS730, AS1020, AS1025, AS1030, AS1040, AS1220, AS1230 and AS1240

Including the “Plus” and “XP” models

LANKOTA®

**270 West Park Avenue
Huron, SD 57350
866-526-5682**

Numerical Parts List

Part Numbers	Description	Qty
LANTC315	Recovery Base Plate	4
LANTC316	Recovery Shackle Mount	4
LANSP2200X16	Round Sling - 16ft x 22,000 lb WLL (Blue)	1
LANTC114SP	1-1/4" Screw Pin Shackle	2
LANTC138SP	1-3/8" Screw Pin Shackle	1
LANF00QF	1/2" x 2.25" Hex Bolt, Gr 5	8
LANFWS55	1/2" SAE Washer	16
RED1F30	1/2" Top Lock Nut	8
LANF018L	3/4" x 3" Gr 8 Hex Bolt	4
LANF28FK	3/4" x 4" Gr 8 Hex Bolt	4
LANFWS58	3/4" SAE Flat Washer	8

Pictorial Parts List

					
LANTC315 (4)	LANSP2200X16 (1)	LANTC114SP (2)	LANTC138SP (1)	LANF018L (4)	LANF28FK (4)
					
LANTC316 (4)	LANF00QF (8)	LANFWS55 (16)	RED1F30 (8)		LANFWS58 (8)

Preparation

1. Park sprayer on a hard, flat surface, turn off the engine and remove the key.
2. Stow the three shackles and the sling in an easily accessible location on the sprayer.
3. Ensure that the four D-rings (tow points) of the sprayer are in good condition - not bent and devoid of dents and gouges possibly from being pulled on.

WARNING

Be sure to read instruction manual for proper installation and use.

27,000 lb Maximum Working Load Limit (of the system)

ALWAYS tow from the large shackle, in the center of the provided sling, connected to two tow points on the sprayer.

Sprayer towing kit **MUST** be used as a complete system in accordance with the manufacturer (LANKOTA). Improper use or failure to strictly adhere to instructions at all times when using the sprayer towing kit may lead to property damage, personal injury, or even death.

LANKOTA assumes no liability for damages caused by improper use.

Kit Installation

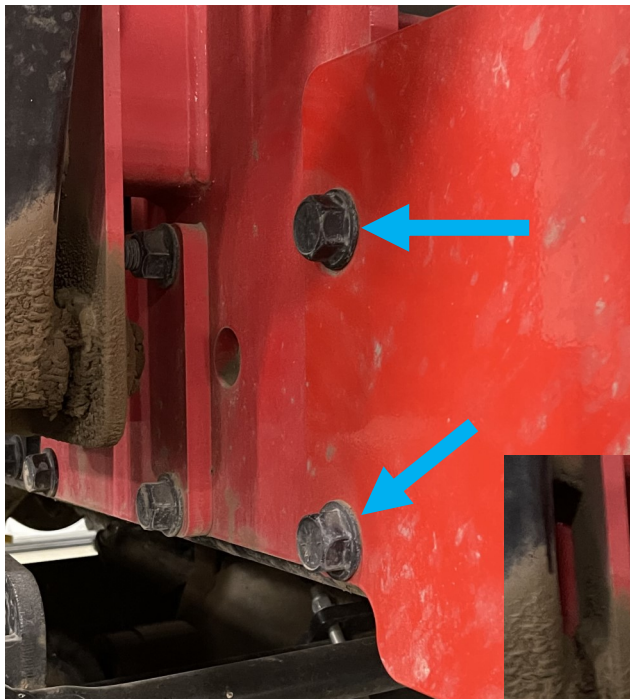


Figure 1

Refer to Figures 1—3

1. At the rear of the frame, remove the two flange bolts shown.
2. Install a mount plate (LANTC315) to each side using the 3/4" x 4" Gr 8 bolts (LANF28FK), 3/4" washers (LANFWS58) and reusing the factory flange nuts.
3. Fasten the shackle mount to the main mount, with the hole towards the rear, with the 1/2" hardware. These GRADE 5 BOLTS serve as shear protection for the sprayer frame.

Note: In Figures 2 & 3, the main mount is on backwards; it should angle towards the front of the sprayer.

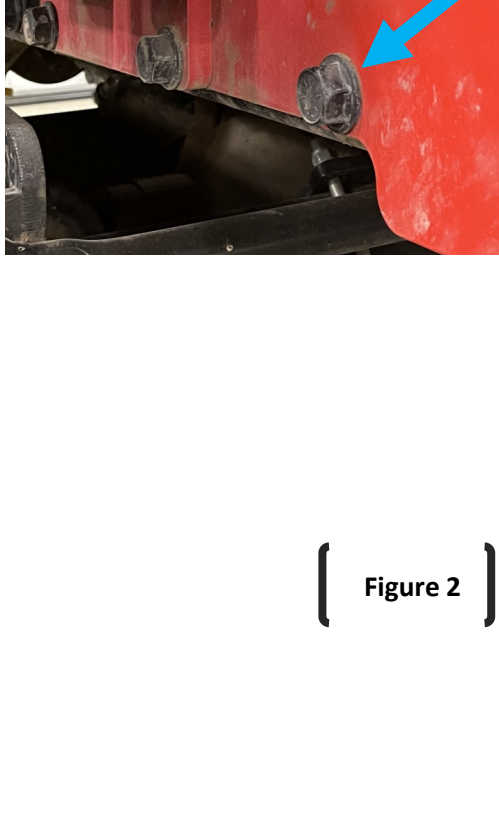


Figure 2



Figure 3



Kit Installation

Refer to Figures 4—6

4. At the front end, remove the rear-most motor mounts.
5. Install a mount plate (LANTC315) to each side using the 3/4" x 3" Gr 8 bolts (LANF018L), 3/4" washers (LANFWS58) and reusing the factory flange nuts.
6. On the passenger side, the top bolt will need to come from the inside, due to the exhaust pipe.
7. Fasten the shackle mount to the main mount, with the hole towards the front, with the 1/2" hardware. These GRADE 5 BOLTS serve as shear protection for the sprayer frame.



Figure 4
(Driver's Side)



Figure 5
(Passenger's Side)



Figure 6

Proper Usage of Kit

Refer to Figures 7—9

1. Remove the sling and shackles from their storage.
2. Connect the sling to one tow point; loop a 1-1/4" shackle (LANTC114SP) through the sling and pin it onto the tow bracket.
3. Repeat on the other side.
4. Place both strands of the sling in the 1-3/8" shackle (LANTC138SP).
5. Connect the center shackle to your chosen rigging.
6. Carefully pull your sprayer out of its unfortunate situation.

Note: When pulling from the front, the strap goes **UNDER** the front axle.



Figure 7



Figure 8



Figure 9