

LANTC24601

Installation Instructions

Lankota Tow Cable Kit for Claas Lexion Combines

LANKOTA®

**270 West Park Avenue
Huron, SD 57350
866-526-5682**

Numerical Parts List

Part Numbers	Description	Qty
LANTC160TR	Tow Cable Assembly	1
LANTC162	Cable Shackle Bushing	4
LANTC178	1/2" Rear Cable Support Chain	1
LANTC208	1 1/4" Shackle	2
LANTC319	Tow Cable Mount	2
LANTC321	Tow Cable Mount Top Plate	2
LANTC322	Tow Cable Storage Bracket	1
LANTC323	Tow Cable Storage Bracket Latch	1
LANTC324	Tow Cable Tensioning Mount	2
LANF01AB	HHCS—1-8 X 3.5", Gr.8	4
LANFE2N5	Top Lock Nut—1", Gr.8	4
LAN26B00	HHCS—5/8" -11 X 2, Gr.5	5
LANFB824	HHCS—3/4"-10 X 6, Gr.5	2
LANFWS50	SAE Flat Washer—1"	8
LANFWS53	SAE Flat Washer—3/8"	4
LANFWS57	SAE Flat Washer—5/8"	10
LANSS704	Twist Lock Pin	1
RED0DTT	Top Lock Nut—3/8"-16, Gr.5	2
REDB308	HHCS—3/8"X2, Gr.5	2
REDKRJF	Top Lock Nut—5/8"-11, Gr.5	5
REDKRJG	Top Lock Nut—3/4"-10, Gr.5	2
REDWU58	Flat Washer—3/4"	4
REDVTG5	24" Zip tie	4

Pictorial Parts List

					
LANTC160TR (1)	LANTC162 (4)	LANTC178 (1)	LANTC208 (2)	LANTC319 (2)	LANTC321 (2)
					
LANTC322 (1)	LANTC323 (1)	LANTC324 (2)	LANF01AB (4)	LANFE2N5 (4)	LAN26B00 (5)
					
LANFB824 (2)	LANFWS50 (8)	LANFWS53 (4)	LANFWS57 (10)	LANSS704 (1)	RED0DTT (2)
					
	REDB308 (2)	REDKRJF (5)	REDKRJG (2)	REDWU58 (4)	

Preparation

1. Remove head from combine
2. Set the parking brake on the combine.
3. Turn off the combine engine and remove the key.

Kit Installation

Refer to Figures 1—3

1. Starting at the front axle, install Claas Tow Cable Mount (LANTC319) in slotted plate located on the bottom of the front axle. Make sure bolt hole on mount is facing the rear of the combine. Take the Tow Cable Top Plate (LANTC321) & bolt together ensuring that the machined surface on the top plate of the Tow Cable Mount (LANTC319) is inside the slotted plate on axle and sides flush.
2. Take (2) HHCS 1"-8 x 3.5", Gr.8 bolts (LANF01AB), (4) SAE Flat Washers 1" (LANFWS50), & (2) 1" Top Lock nuts (LANFE2N5) and tighten hardware.

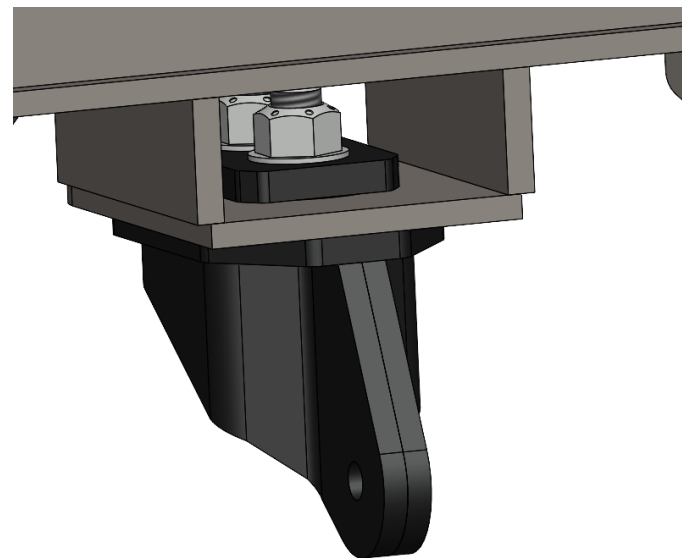


Figure 1

Figure 2



Figure 3



Kit Installation

Refer to Figures 4 & 5

3. Position the cable assembly (LANTC160TR) under the combine with the two longer legs near the previously installed cable mounts (LANTC319 & LANTC321) and the shorter leg at the rear of the combine.
4. Install shackle (LANTC208) on the cable ends of both the long legs of the cable assembly.
5. Attach cable end to Tow Cable Mounts (LANTC319) with the shackles (LANTC208), 3/4" x 6" Gr.5 bolts (LANFB824), washers (REDWU58), & top lock nuts (REDKRJG). **Note: The original shackle pin is not used.**

NOTE: Do not over-tighten. The shackle needs to be able to rotate freely. If the shackle cannot be rotated by hand, loosen the nut slightly until it can.

Figure 4

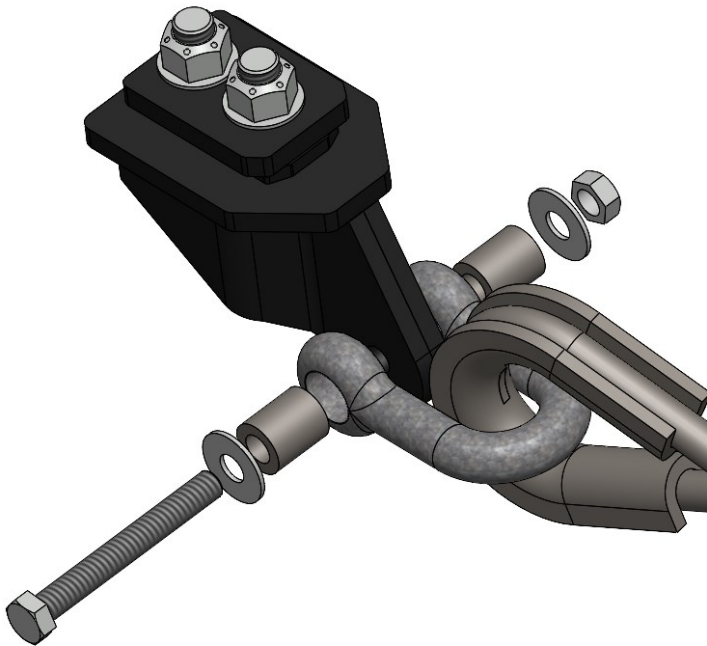
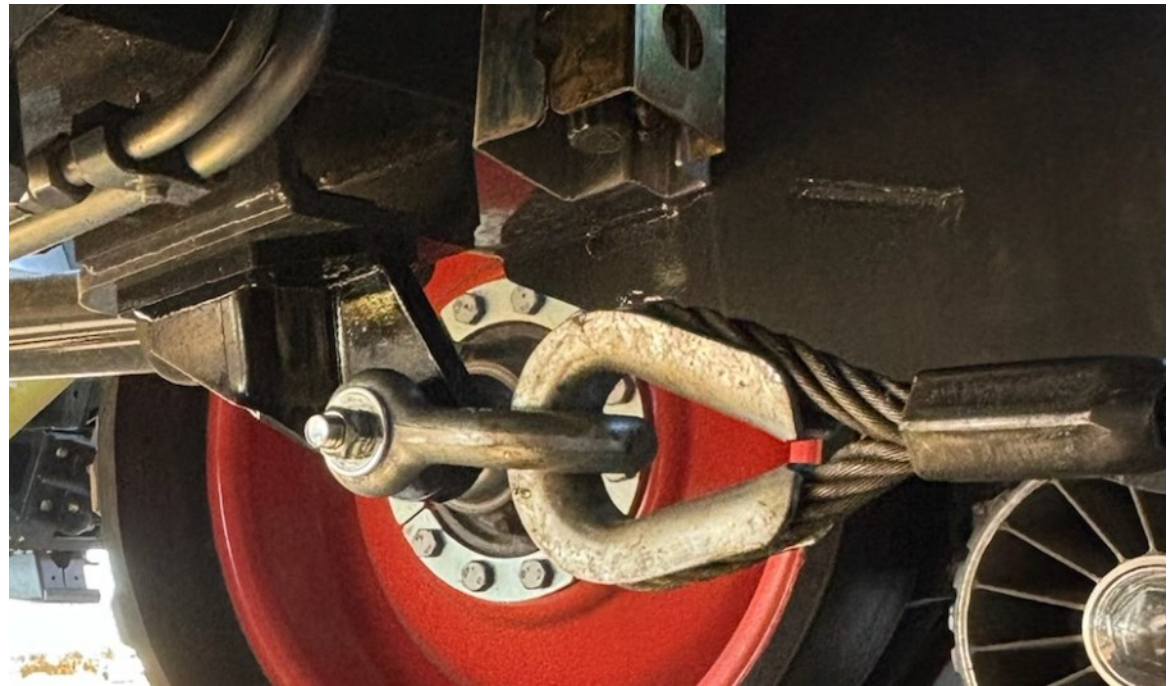


Figure 5



Kit Installation

Refer to Figures 6—8

6. Locate 3 hole bolt pattern on frame rails on both sides of combine just past half way towards back of combine. They are bolting cross bracing on bottom side of combine frame.
7. One side at a time, take bolts out and install Cable Tensioning Mounts (LANTC324) re-using factory bolts. Tighten hardware.
8. After Cable Tensioning Mounts are installed, pull cable assembly (LANTC160TR) tight removing slack in cable, and use a floor jack or blocks to hold D-ring up to bottom of combine.
9. Feed 1/2" chain (LANTC178) through eyelets of the front two cables that are attached to Tow Cable Mounts (LANTC319).
10. Bolt 1/2" chain (LANTC178) to Cable Tensioning Mounts (LANTC324) using HHCS—3/8" x 2" bolts (REDB308), SAE 3/8" flat washers (LANFWS53), & 3/8" top lock nuts (REDODTT). Tighten hardware.
11. Use provided zip ties (REDVTG5) to hold D-ring and back cable clear from the ground.

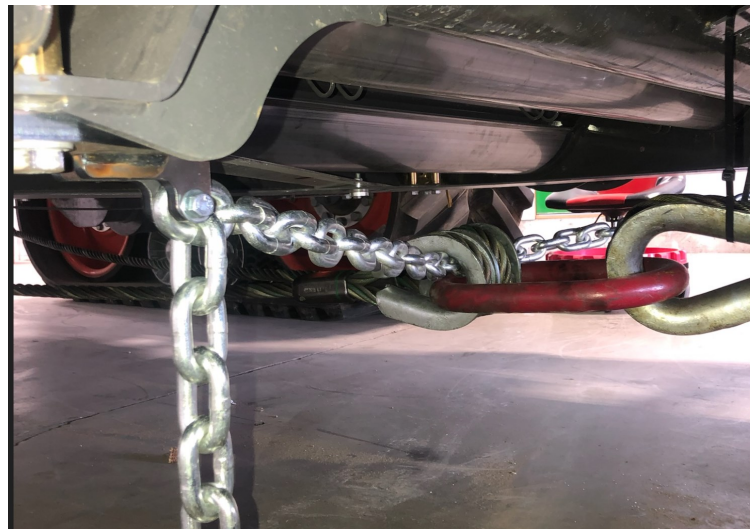
Figure 6



Figure 7



Figure 8



Kit Installation

Refer to Figures 9 & 10

12. Move to the back on the combine and install Tow Cable Storage Bracket (LANTC322) to back plate behind rear axle with 4 hole bolt pattern. Use (4) HHCS— 5/8" x 2" bolts (LAN26B00), (8) 5/8" SAE flat washers (LANFWS57), & (4) 5/8" top lock nuts (REDKRJF). Level and tighten hardware.
13. Attach Tow Cable Storage Latch (LANTC323) to Tow Cable Storage Bracket (LANTC322) using HHCS—5/8" x 2" bolt (LAN26B00), (2) 5/8" SAE flat washers (LANFWS57), & 5/8" top lock nut (REDKRJF). **Do not over tighten. Tow Cable Storage Latch needs to move easily by hand.**
14. Place to cable into the Storage hook and latch behind the cable eye. Use twist lock pin (LANSS704) to lock latch in place holding cable in storage location.

Figure 9

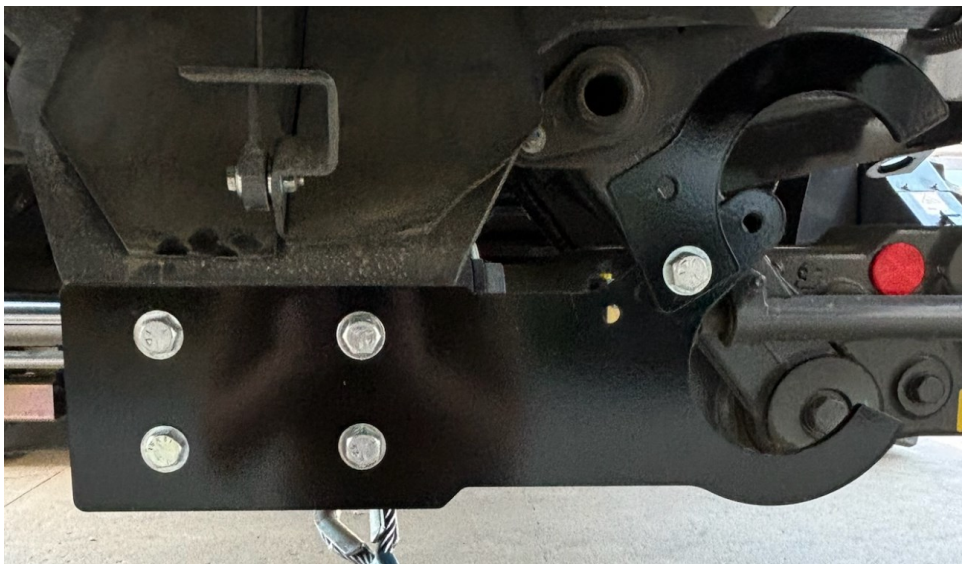
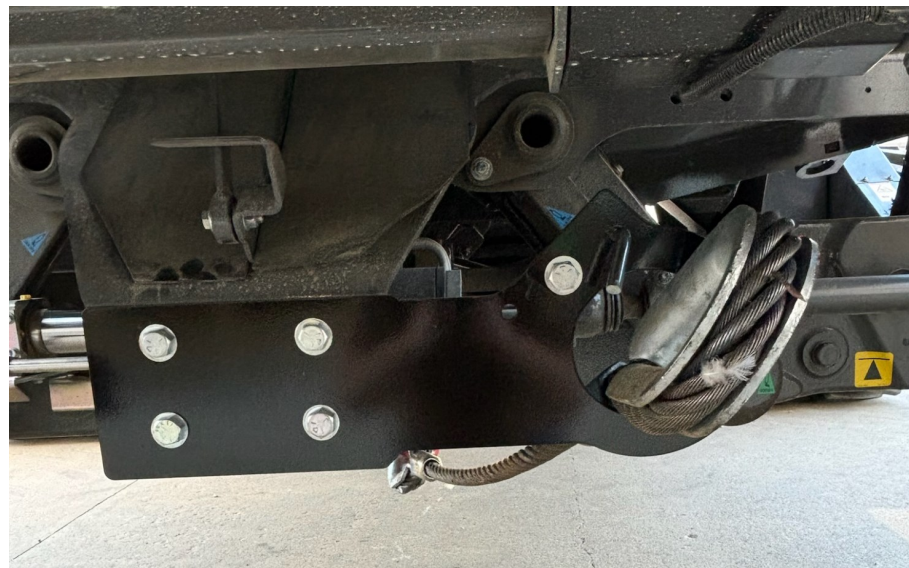


Figure 10





**For further technical assistance,
Call Lankota Inc. at:
1-866-526-5682**

