

LANTH400

Installation Instructions

Combine Header Trailer Hitch for JD® 70 & “S” Series Combines

LANKOTA®

**270 West Park Avenue
Huron, SD 57350
866-526-5682**

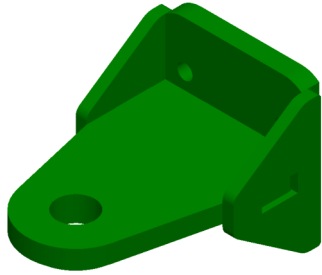
Numerical Parts List

Part Numbers	Description	Qty
LANTH401	Hitch Weldment	1
LANTH402	Hitch Spacer, 2020+	2
LAN20180	M20 x 190mm Bolt	6
LANFH599K	M20 Flange Head Center Lock Nut	6
LANFHGCF9	M20 Extra Thick Flat Washer	6

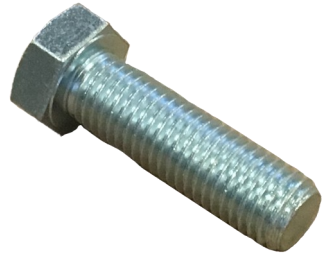
Pictorial Parts List



Optional Pictorial Parts List



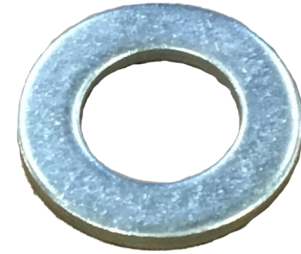
LANTH1451W (1)



LANF2II7 (4)

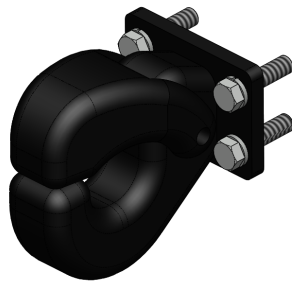


REDWL55 (4)



LANFWS55 (4)

(OR)



LAN10040 (1)



LANFC506 (4)

Preparation

1. Park combine on hard, level surface.
2. Steer the rear wheels to the left and raise the straw spreader to provide more space for installing this hitch.
3. Set the parking brake on the combine.
4. Turn off the combine engine and remove the key.

Kit Installation

Refer to Figure 1

1. Using a sufficient tonnage bottle jack and wood blocks, position the jack under the left hand designated jacking location under the rear axle and raise until the wheel can be rotated.
2. Remove the three factory axle bolts and nuts. The other two factory bolts located near the end of the axle frame should remain in place as shown.

Figure 1



Kit Installation

Refer to Figure 2

Note: To aid in ease of installation, it would be helpful to use the long pallet the hitch was shipped on to raise and hold the Axle Base Weldment (LANTH1262W) in position.

3. Raise Hitch Weldment (LANTH401) into place and align holes in the hitch mounting plate with six holes in the axle frame. It may be necessary to use a line-up pry bar and/or manipulate the bottle jack up/down to line up all of the axle holes.

Refer to Figure 3

4. Install six M20 x 190mm bolts (LAN20180) as shown in Figure 3. Insert the bolts through from the rear of the axle frontward using one M20 extra thick flat washer (LANFHGCF9) under each bolt head. Install one M20 flange center lock nut (LANFH599K) per bolt on the other side. Tighten all hardware.

Special Notes:

- 4.1 *On Rear Wheel Drive (RWD) models, it will be necessary to install the two upper and two lower bolts from the front of the axle rearward to allow clearance for the hydraulic shield covers to be re-installed. Re-use the three factory flange head nuts to secure the covers in place.*
- 4.2 *On non-RWD models with Auto-Trac (steering angle sensor) wiring harness toward the rear wheel, install all supplied hardware as instructed in step 4. Re-use the three factory flange head nuts to secure the wiring harness shield covers in place.*
- 4.3 *For MY2020 or newer, it may be necessary to use the included spacers (LANTH402) to clear the bottom of the axle.*



Figure 2

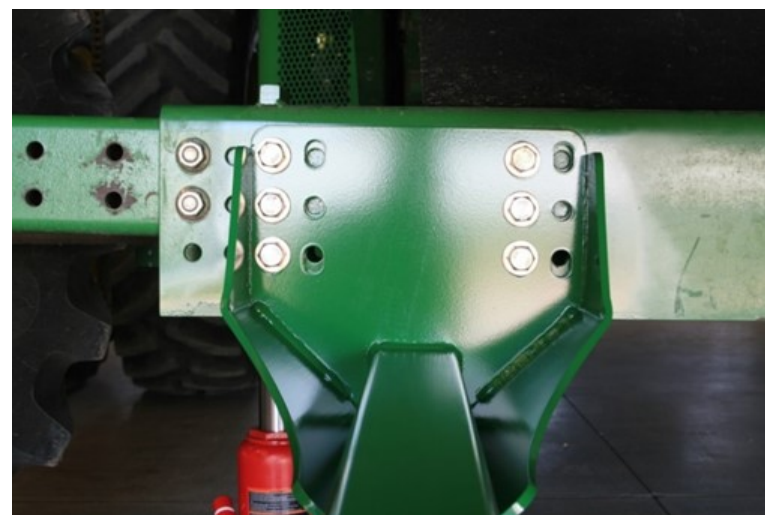


Figure 3

Kit Installation

Refer to Figure 4

5. Lower combine to the ground. Remove the bottle jack and all tools.



Figure 4

Kit Installation

Note: If the tube weldment (LANTH401) does not ship with the appropriate hitch bolted on, follow these steps.

Refer to Figure 5

6. Ensure the threaded holes are clear of any debris by blowing them out with compressed air.

Refer to Figure 6 (For Clevis Hitch)

7. Bolt on the clevis hitch weldment (LANTH1451W) with the provided 1/2" x 2" bolts, lock washers and flat washers.

Refer to Figure 7 (For Pintle Hitch)

8. Bolt on the pintle hitch with the hardware included in the kit and the 1/2" x 1.5" Bolts.



Figure 5

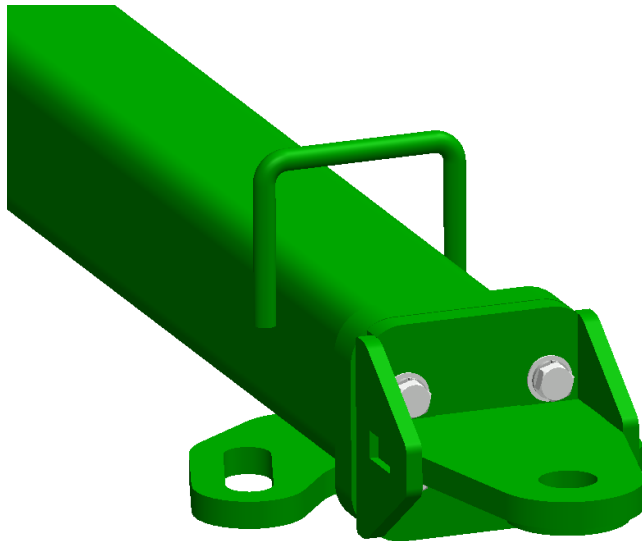


Figure 6

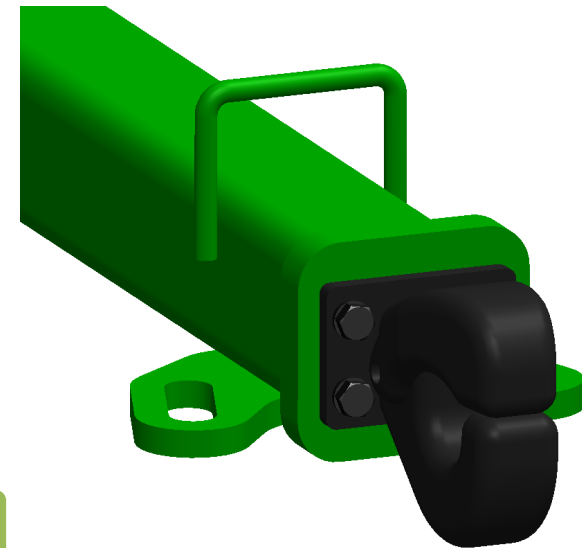
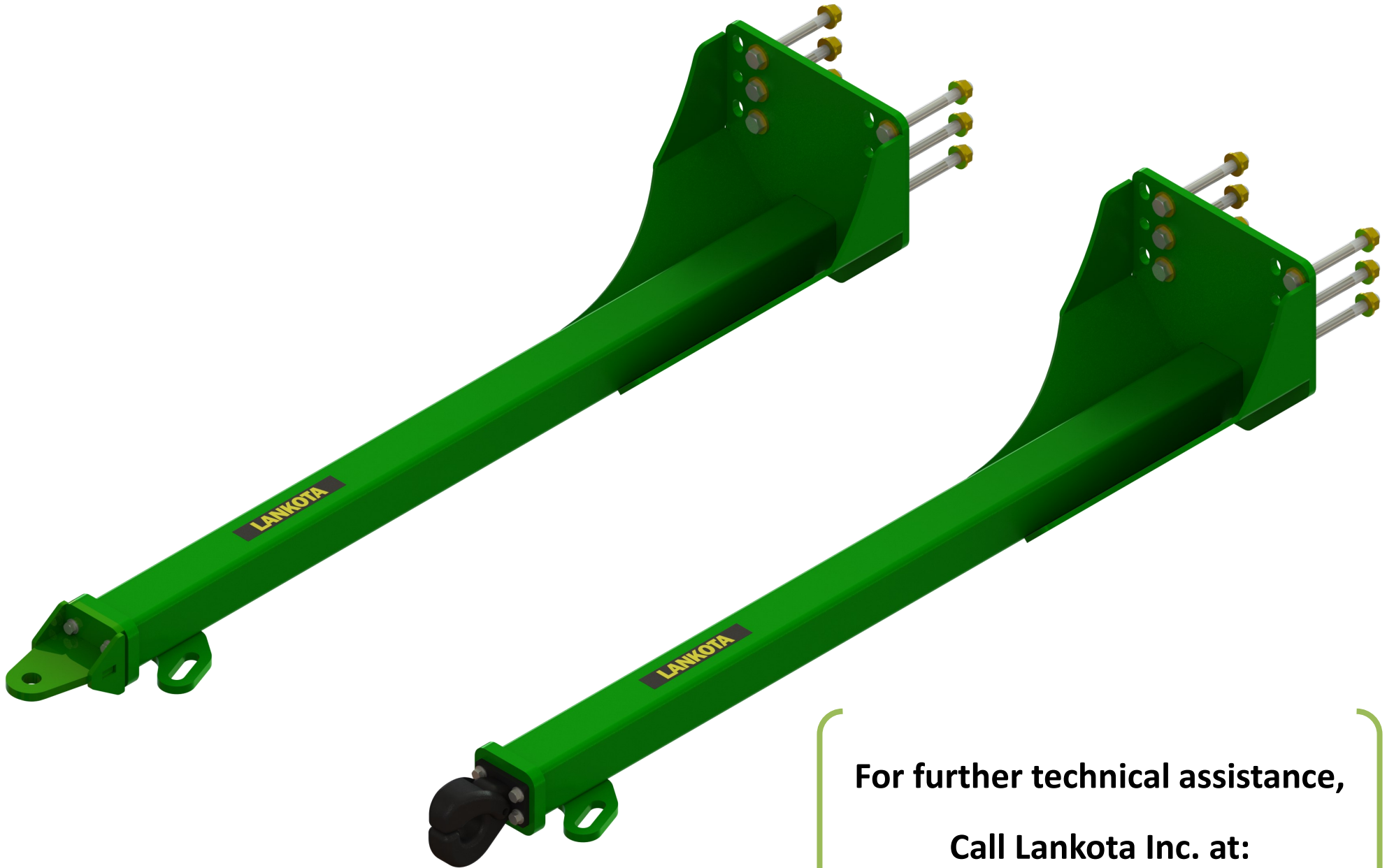


Figure 7



For further technical assistance,

Call Lankota Inc. at:

1-866-526-5682