

LANTH620

Installation Instructions

Swiveling Combine Header Trailer Hitch for JD® 70 & “S” Series Combines

LANKOTA®

270 West Park Avenue

Huron, SD 57350

866-526-5682

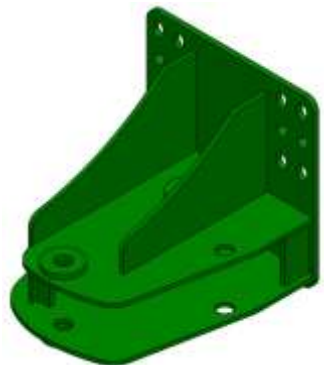
Numerical Parts List

| Part Numbers | Description | Qty |
|--------------|---------------------------------|-----|
| LANTH1262W | Axle Base Weldment | 1 |
| LANTH1453W | Swivel Tube Weldment | 1 |
| LANTH402 | Hitch Spacer, 2020+ | 2 |
| LANF0I8B | 1/4" x 2.50" Roll Pin | 2 |
| LANHW8223 | 1-1/4" x 7.75" Pivot Pin | 1 |
| LANHH80200 | 1-1/4" Lockease® Hitch Pin | 1 |
| LAN20180 | M20 x 190mm Bolt | 6 |
| LANFH599K | M20 Flange Head Center Lock Nut | 6 |
| LANFHGCF9 | M20 Extra Thick Flat Washer | 6 |

Optional Parts List

| Part Numbers | Description | Qty |
|--------------|---------------------------------|-----|
| LANTH1451W | Bolt-on Clevis Hitch Weldment | 1 |
| LANF2II7 | 1/2" x 2" Gr 8 Hex Bolt | 4 |
| REDWL55 | 1/2" Lock Washer | 4 |
| LANFWS55 | 1/2" SAE Washer | 4 |
| or | | |
| LAN10040 | 15 Ton Bolt-on Pintle Hitch Kit | 1 |
| LANFC506 | 1/2" x 1.5" Gr 8 Hex Bolt | 4 |

Pictorial Parts List



LANTH1262W (1)



LANTH1453W (1)



LANTH402 (2)



LANHH80200 (1)



LANHW8223 (1)



LAN20180 (6)



LANFH599K (6)



LANFHGCF9 (6)



LANF0I8B (2)

Optional Pictorial Parts List



LANTH1451W (1)



LANF2II7 (4)



REDWL55 (4)



LANFWS55 (4)

[OR]



LAN10040 (1)



LANFC506 (4)

Preparation

1. Park combine on hard, level surface.
2. Steer the rear wheels to the left and raise the straw spreader to provide more space for installing this hitch.
3. Set the parking brake on the combine.
4. Turn off the combine engine and remove the key.

Kit Installation

Refer to Figure 1

1. Using a sufficient tonnage bottle jack and wood blocks, position the jack under the left hand designated jacking location under the rear axle and raise until the wheel can be rotated.
2. Remove the three factory axle bolts and nuts. The other two factory bolts located near the end of the axle frame should remain in place as shown.

Figure 1



Kit Installation

Refer to Figure 2

Note: To aid in ease of installation, it would be helpful to use the long pallet the hitch was shipped on to raise and hold the Axle Base Weldment (LANTH1262W) in position.

3. Raise Axle Base Weldment (LANTH1262W) into place and align holes in the hitch mounting plate with six holes in the axle frame. It may be necessary to use a line-up pry bar and/or manipulate the bottle jack up/down to line up all of the axle holes.



Figure 2

Refer to Figure 3

4. Install six M20 x 190mm bolts (LAN20180) as shown in Figure 3. Insert the bolts through from the rear of the axle frontward using one M20 extra thick flat washer (LANFHGCF9) under each bolt head. Install one M20 flange center lock nut (LANFH599K) per bolt on the other side. Tighten all hardware.

Special Notes:

- 4.1 *On Rear Wheel Drive (RWD) models, it will be necessary to install the two upper and two lower bolts from the front of the axle rearward to allow clearance for the hydraulic shield covers to be re-installed. Re-use the three factory flange head nuts to secure the covers in place.*
- 4.2 *On non-RWD models with Auto-Trac (steering angle sensor) wiring harness toward the rear wheel, install all supplied hardware as instructed in step 4. Re-use the three factory flange head nuts to secure the wiring harness shield covers in place.*
- 4.3 *For MY2020 or newer, it may be necessary to use the included spacers (LANTH402) to clear the bottom of the axle.*



Figure 3

Kit Installation



Figure 4

Refer to Figure 4

5. Lower combine to the ground. Remove the bottle jack and all tools.
6. Install Swivel Tube Weldment (LANTH1453W) into the Axle Base Weldment (LANTH1262W) as shown in Figure 4. The raised lips of the tube bushings should be facing upward. Use the 1-1/4" Lockcase Pin (LANHH80200) to temporarily position and hold the tube into place.

Refer to Figure 5

7. Pre-install one slotted spring pin (LANF018B) through one end of the 1-1/4" pivot pin (LANHW8223). Insert the pivot pin through the axle base weldment and swivel tube weldment from the top.
8. Install the second slotted spring pin through the other end of the pivot pin.



Figure 5

Kit Installation

Note: If the tube weldment (LANTH1453) does not ship with the appropriate hitch bolted on, follow these steps.

Refer to Figure 6

9. Ensure the threaded holes are clear of any debris by blowing them out with compressed air.

Refer to Figure 7 (For Clevis Hitch)

10. Bolt on the clevis hitch weldment (LANTH1451W) with the provided 1/2" x 2" bolts, lock washers and flat washers.

Refer to Figure 8 (For Pintle Hitch)

11. Bolt on the pintle hitch with the hardware included in the kit and the 1/2" x 1.5" Bolts.



Figure 6



Figure 7



Figure 8

Kit Installation



**For further technical assistance,
Call Lankota Inc. at:
1-866-526-5682**

LANTH620 User's Manual

This TH620 hitch offers two positions: Tow Position and Storage Position. Use the 1-1/4" Lockease pin to secure the swivel tube weldment in the desired position.

- ◆ The tow position can be used for offset towing to improve trailer visibility to the operator. This position can also be used to prevent the trailer from going too far into a ditch under certain road conditions.
- ◆ The storage position can be used to provide improved ground clearance while operating combine in the field, ease of loading combine onto a trailer or when dropping a windrow for baling.

Tow Position



Storage Position

